

BEST MANAGEMENT PRACTICES FOR STATE LANDS UNDER MANAGEMENT OF THE DEC IN THE ADIRONDACK PARK

Applicability

These Best Management Practices (BMP's) are intended for use by those applying for and implementing terrestrial invasive plant species management activities on State Lands under an Adopt-a-Natural-Resource Stewardship Agreement (ANRSA). The following document contains acceptable practices for control of the following four terrestrial invasive species: Purple loosestrife (*Lythrum salicaria*), Japanese knotweed (*Polygonum cuspidatum*), Common reed (*Phragmites australis*), Garlic mustard (*Alliaria petiolata*).

The following management options, should be selected with consideration for the location and size of the stands, the age of the plants, past methods used at the site, time of year, sensitive native flora within or adjacent to the target infestation, and adjoining and nearby land uses.

Other management approaches not identified here may be appropriate but must be approved by the Regional Land Manager of the NYS Department of Environmental Conservation in the region where the proposed invasive plant control activity will take place in consultation with the Adirondack Park Agency's Director of Planning.

Within the Park there are several geographic settings (at the location of the target plant(s)) that need to be considered when determining appropriate BMP's and the regulatory instruments needed prior to their implementation. These settings and relevant action are:

1. In or within 100' of a wetland on private or public lands -- requires a general permit from the Adirondack Park Agency.
2. Forest Preserve lands -- requires an ANRSA from the Department of Environmental Conservation and, if wetlands are involved, an Adirondack Park Agency permit.
3. If the standing water is greater than one acre in size and/or has an outlet to surface waters, an aquatic pesticides permit is required pursuant to ECL 15-0313(4) and 6 NYCRR 327.1 in which case application can only be made by a Certified Applicator or Technician or supervised Apprentice licensed in "Category 5 - Aquatic Vegetation Control".

GENERAL PRACTICES

1. **Minimum Tools Approach** - State land stewardship involving invasive plant species management practices should always incorporate the principles of the Minimum Tools Approach. Any group or individual implementing such practices on State land should only use the minimum tools, equipment, devices, force, actions or practices that will effectively reach the desired management goals. Implicit in this document is the stricture to implement a hierarchy of management practices based upon the target species and site conditions starting with the least intrusive and disruptive methods.

2. **Notification** - The following best management practices are intended to be used only when invasive terrestrial plant species are identified on Forest Preserve lands. These management techniques are temporary activities and are implemented with the ultimate goal being protection and restoration of native plant communities. Appropriate signage should be employed to explain the project. It may also be appropriate to issue press releases to explain the goals and techniques of the management activities.

3. **Motorized Equipment** - All use of motorized equipment on State lands under the jurisdiction of the DEC within the Adirondack Park shall be in compliance with Commissioner's Policy Number 17 (CP-17), and other pertinent DEC policy regarding the use of motorized equipment on Forest Preserve Lands.

4. **Erosion Control** - Some of the methods described below require actual digging or pulling of plants from the soil. In all cases they require removal of vegetation whether or not there is actual soil disturbance. Each situation must be studied to determine if the proposed control method and extent of the action will destabilize soils to the point where erosion is threatened. Generally if more than 25 square feet of soil surface is cleared or plant removal occurs on steep slopes silt fence should be installed and maintained.

5. **Revegetation** - All of the control methods below are aimed at reducing or eliminating invasive species so that natives are encouraged to grow and re-establish stable conditions that are not conducive to invasive colonization. In most cases removal or reduction of invasive populations will be enough to release native species and re-establish their dominance on a site. However, replanting or reseeding with native species may be required.

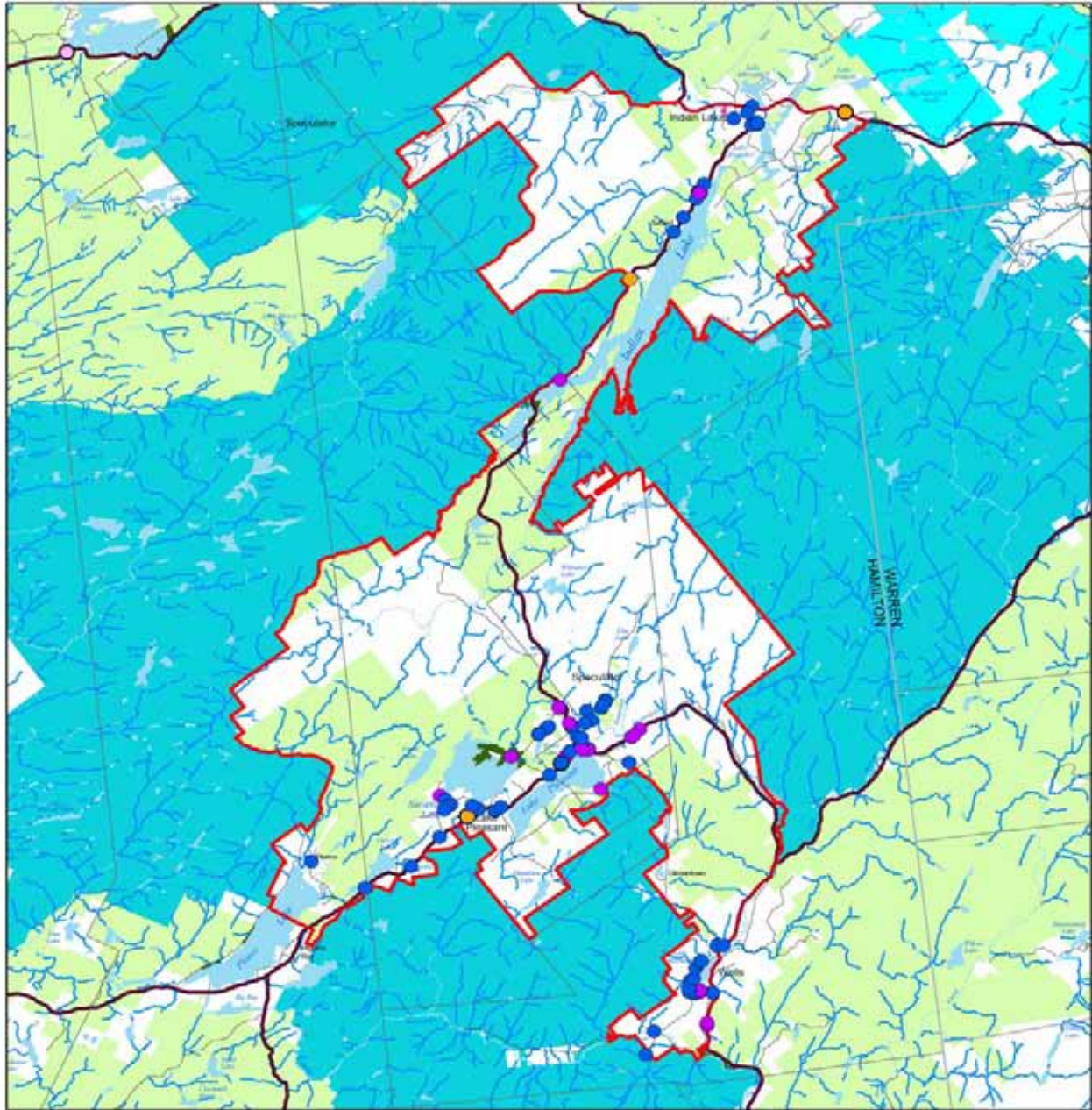
6. **Herbicide Treatments** - The only herbicide application allowed is spot treatment to individual plants using a back pack or hand sprayer, wick applicator, cloth glove applicator, stem injection or herbicide clippers. **No broadcast herbicide applications using, for example a truck mounted sprayer, are allowed.** The only herbicides contemplated and approved for use are glyphosate and triclopyr. Glyphosate, in the correct formulation, may be used in situations where there is standing water including wetlands. Triclopyr is to be used only in upland situations. **In all cases all label restrictions must and shall be followed by a certified applicator in an appropriate category.** The certified applicator or technician must have copies of the appropriate labels at the treatment site. Glyphosate and triclopyr are non-selective herbicides that are applied to plant foliage or cut stems and are then translocated to the roots. The application methods described and allowed are designed to reduce or eliminate the possibility that non-target species will be impacted by the herbicide use. All herbicide spot treatments require follow-up inspection later in the growing season or the following year to re-treat any individuals that were missed. Stem injections may be implemented using a large gauge needle or a specialized injection tool such as the JK Injection System (www.jkinjectiontools.com).

All herbicide mixing will be done in accordance with the label precautions and take place at a staging area (typically at a marshalling yard or a vehicle). No mixing shall take place on State lands unless at an approved location constructed for such use. Unused chemical and mixes shall be disposed of in a legal manner. No chemical or mix shall be disposed of on State lands unless at an approved location constructed for such use.

7. **Sanitation** - Management personnel must attempt to prevent invasive plant propagules from entering a treatment site or from being exported from it. Therefore, personnel must insure that their clothing including boots do not carry seeds or other propagules or weed seed infected soil clods. At the beginning of the field day personnel should inspect their clothing and boots at the staging area. Prior to leaving the treatment site personnel should conduct another inspection and remove any propagules or soil clods from their clothing or boots. Personnel must insure that all equipment used for invasive species control whether it be hand or power driven is cleaned prior to entering onto a control site and prior to leaving the treatment site. Vehicles and equipment can be cleaned at a staging area that is distant from the control site after management activities if precautions are taken during transport to contain any propagules. This is an effort to reduce transport of plant propagules and reduce the potential for new invasive introductions. Use steam or hot water to clean equipment.

8. **Material Collection and Transportation** - While on the treatment site bag all cut material in heavy duty, 3 mil or thicker, black contractor quality plastic clean-up bags. Securely tie the bags and transport from the site in a truck with a topper or cap to securely fasten the load, in order to prevent spread of the plant material from the project work site. Transport the material to a legal disposal location.

9. **Composting** - Because of the extremely robust nature of invasive species, composting in a typical backyard compost pile or composting bin is not appropriate. However, methods can be used whereby sun-generated heat can be used to destroy the harvested plant materials. For instance, storage in a sealed 3 mil thickness (minimum) black plastic garbage bags on blacktop in the sun until the plant materials liquefy is effective. If a larger section of blacktop is available, make a black plastic (4 mil thickness minimum) envelope sealed on the edges with sand bags. The plant material left exposed to the sun will liquefy in the sealed envelope without danger of dispersal by wind. The bags or envelopes must be monitored to make sure the plants do not escape through rips, tears or seams in the plastic. **When composting is suggested later in the text it is understood that liquefying the plant material in or under plastic is the desired action; not disposal in backyard composters or open landfill composting piles.**



Jessup River WF UMP
Positive Invasive Data
Hamilton County

The Nature Conservancy
 1195 N. Zeeb Road
 Ithaca, NY 14850
 www.nature.org


Map prepared by
 ANCALT GIS
 2004
 Keene Valley, New York
 Copyright 2004 (C) The Nature Conservancy

Legend

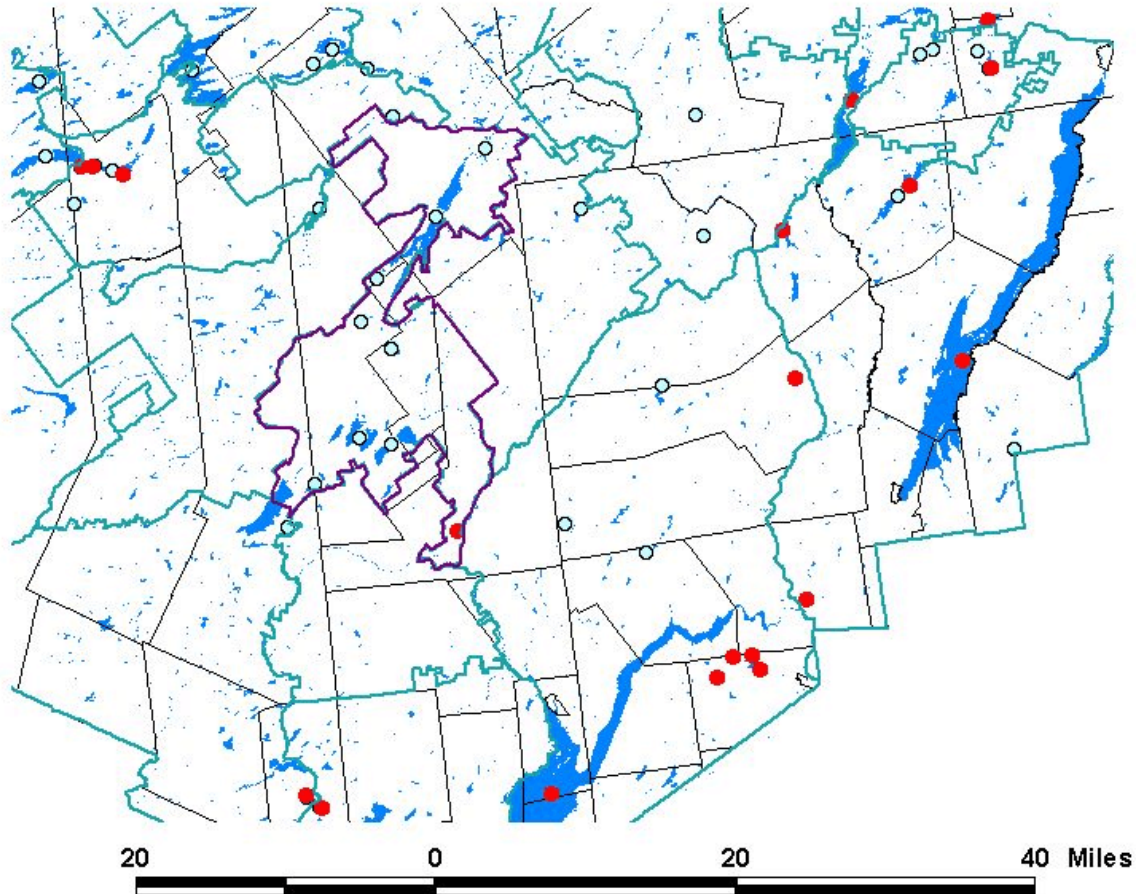
- Jessup River WF UMP Boundary

Terrestrial Invasive Plants

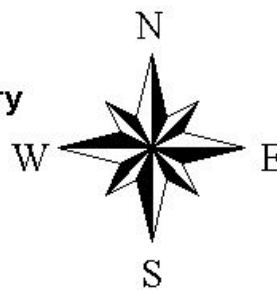
- *Lythrum salicaria* = Purple loosestrife
- *Polygonum cuspidatum* = Japanese knotweed
- *Phragmites australis* = Common reed


 0 0.5 1 2 3 Miles
1:250,000

Jessup River Wild Forest Aquatic Invasive Plant Distribution, 2004



-  **Jessup River Wild Forest Boundary**
-  **UMP Boundaries**
-  **Infested Lakes**
-  **APIPP Lakes Inventoried**
-  **Municipality Boundaries**



Draft Comprehensive Snowmobile Trail Briefing Document

I. VISION

To develop and maintain an integrated snowmobile trail system on public and increasingly on private land in the Adirondack Park that will provide snowmobilers with an experience that is consistent with the spirit and letter of Article XIV, Section 1 of the New York State Constitution while also striving to enhance the vitality of the Park's citizens by providing trail linkages between local communities within the Park.

II. GOALS

1. **Protect natural and cultural resources and the wild forest character of public lands in the Park (as envisioned by the Constitution, APSLMP and appropriate laws, rules, regulations) by:**

- considering underutilized trails for abandonment
- utilizing to the maximum extent possible routes on the periphery of Wild Forest Units or parallel and near to travel/transportation corridors for new trail development and, where appropriate, re-designating trails in the interior of Wild Forest Units or in the vicinity of private inholdings for non-snowmobile use only
- focusing on opportunities to route trails on non-state lands wherever possible and encouraging long-term commitment of corridor trail systems on private lands
- increasing law enforcement resources at all levels to deter illegal activity on the trail system and in surrounding public and private areas
- providing intelligent and resource protective trail system planning in an overall way rather than dealing with each trail segment individually
- focusing the corridor trail system on non-state lands

2. **Providing a safe, enjoyable snowmobile experience by:**

- avoiding unsafe trail conditions
- minimizing dependency on lake and road crossings
- encouraging partnerships with the private sector, state and local governments that will provide, maintain and operate snowmobile trails
- establishing a clear set of standards for snowmobile trails and snowmobile related activities on public lands

3. Promoting tourism and economic opportunities for local communities by:

- connecting communities and major points of interest
- connecting trail systems from outside of the Park
- connecting to necessary support services (gas, food, lodging, etc.)
- identifying important snowmobile trail connections