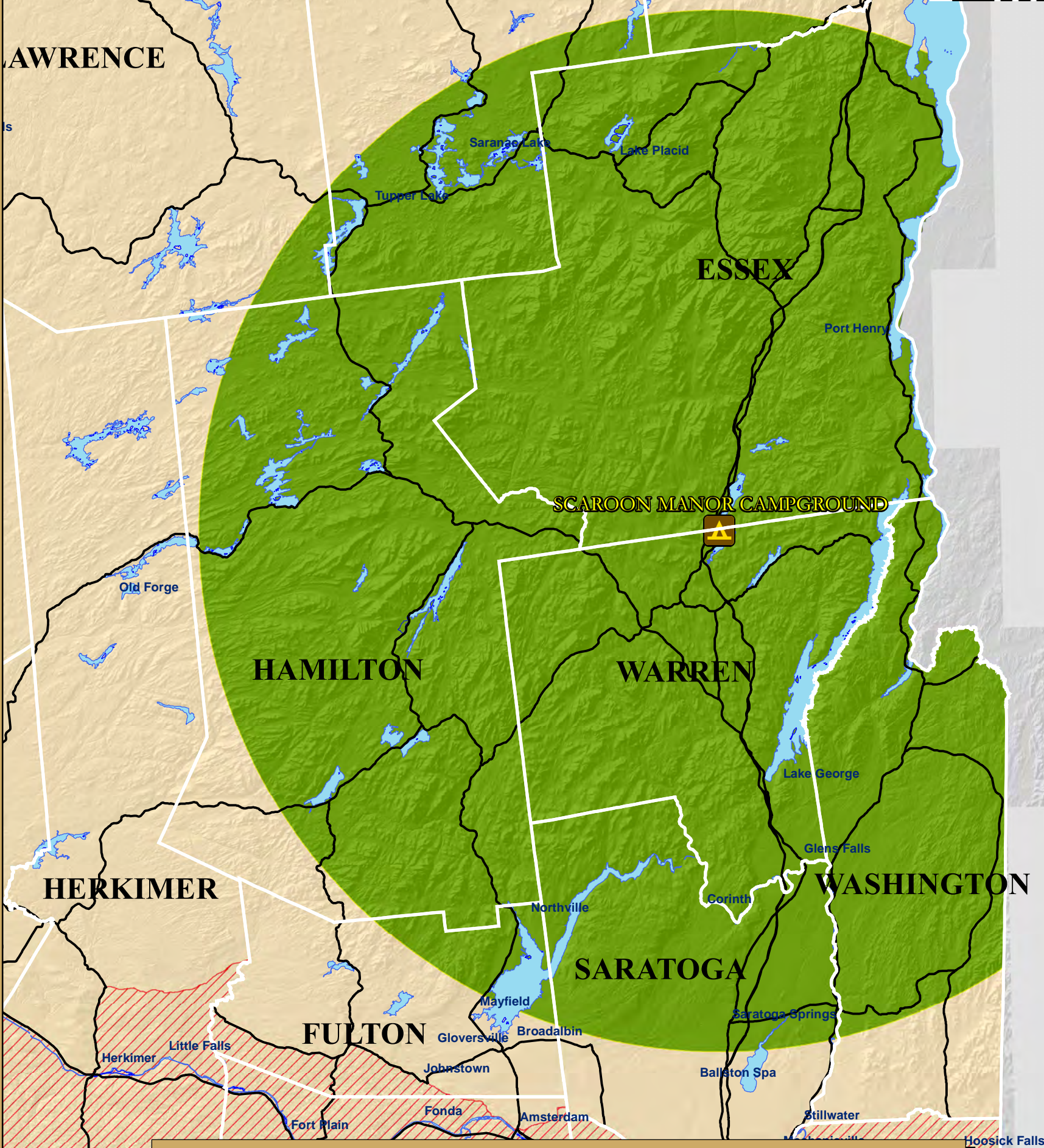




NYS DEC Untreated Firewood Source Map



NYS Firewood Regulations

- It is **illegal** to transport untreated firewood more than 50 miles from its source or origin.
- It is **illegal** to bring untreated firewood into New York State.
- When transporting untreated firewood within 50 miles of its source or origin, you **must** carry proof of source or origin, such as a receipt.

For more information visit www.dec.ny.gov and search "firewood", scan the QR code provided above with your smart phone, or call toll free 1-866-640-0652.

Don't Move Firewood!

■ Emerald Ash Borer Quarantine

■ 50 mi radius around campground

It is illegal to move any firewood out of the quarantined area (red stripes on map) unless it has been certified in compliance of the Emerald Ash Borer Quarantine by USDA or NYS Department of Agriculture and Markets.

