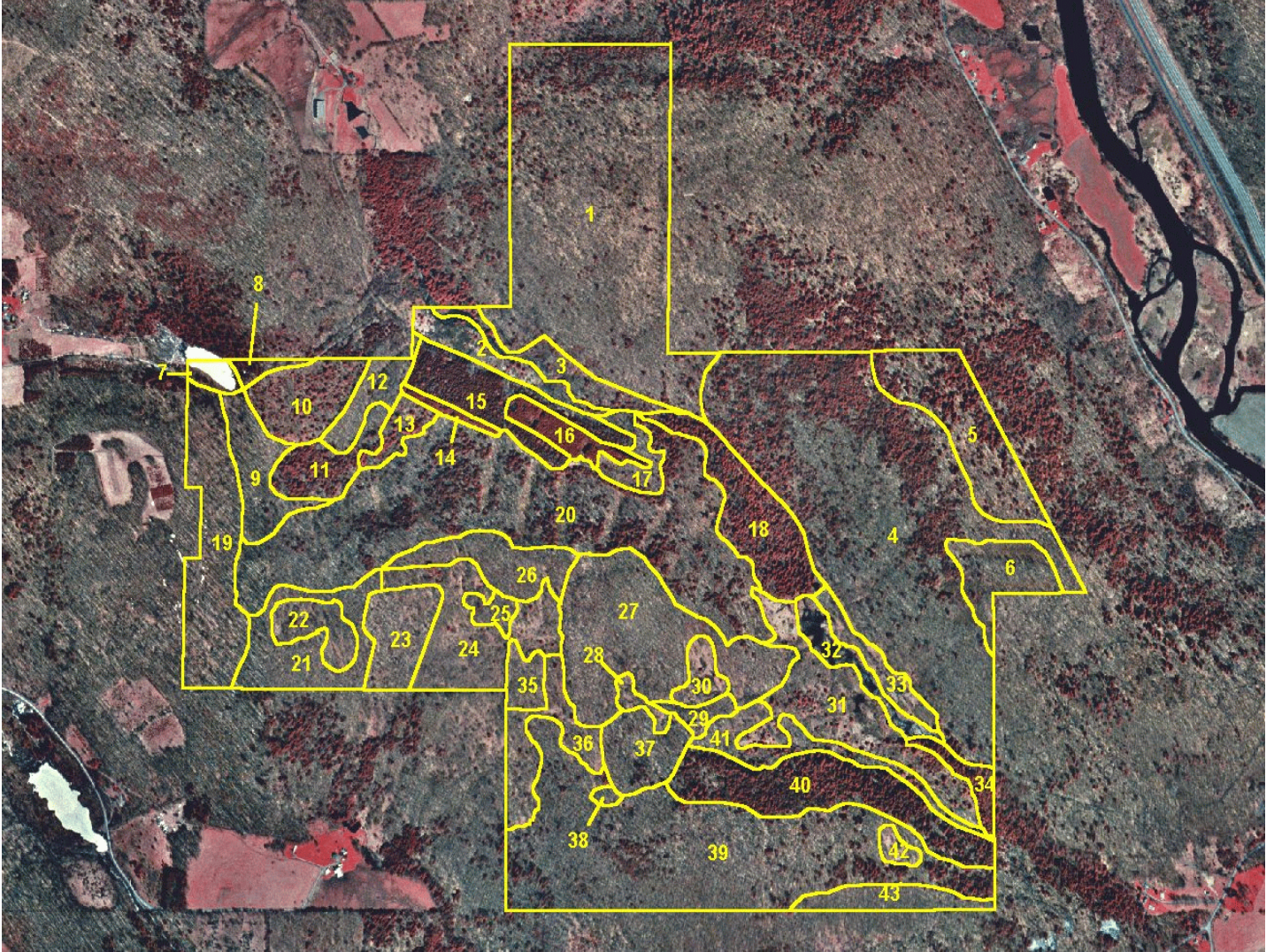


BROOME - 9 Cat Hollow
Scale: 1 inch = 1461 feet
↑North
1995 Photo



BROOME # 9 STATE REFORESTATION AREA. CAT HOLLOW STATE FOREST.

STAND	ACRES	FOREST TYPE	OBJECTIVE TYPE	DBH	MGT. DIR.	SPECIES	BASAL AREA	TREAT. TYPE	TREAT. YEAR	COMMENTS
1	96	NH	NH	PT	U	RM-BE	129	ST	2017	
2	7	BR	BR	-	BR	BRUSH	0	RE	2025	
3	8	NH	NH	PT	U	RM-BB	97	TSI	2025	
4	108	NH	NH-HEM	ST	U	RM-BE	145	ST	2007	
5	21	NH-HEM	NH-HEM	ST	U	HEM-RM	96	ST	2025	
6	10	NH-OAK	NH-OAK	ST	E	RM-RO	100	ST	2021	
7	2	POND	POND	-	ZW	POND	0	none	none	
8	2	NH-HEM	NH-HEM	PT	ZV	RM-HEM	165	none	none	
9	11	NH	NH	PT	U	RM-RO	84	TSI	2027+	
10	12	PH	PH	SS	ES	RM-ASP	49	GC	2005	cut 2 acres every 8 years
11	9	NH-HEM	NH-HEM	PT	ZW	RM-HEM	183	none	none	Wooded wetland.
12	6	NH	NH-HEM	PT	E	RM-ASP	130	TSI	2021	
13	4	BR	BR	-	BR	BRUSH	0	RE	2027+	
14	2	RP	NH	PT	E	RP-BC	242	TSI	2005	
15	15	WS	WS-NH	PT	E	WS-ASP	113	TSI	2027+	
16	6	RP	NH	PT	E	RP-BC	226	TSI	2005	
17	5	NH	NH	PT	E	RM-ASP	105	TSI	2027+	
18	18	HEM-NH	HEM-NH	ST	ZR	HEM-YB	182	none	none	
19	25	NH	NH	ST	U	HM-WA	75	ST	2025	Forest Tent Caterpillar maple timber salvage 1996.
20	90	NH	NH-HEM	ST	U	HM-RM	121	ST	2005	
21	15	NH	NH	ST	U	RM-HM	109	TSI	2021	

BROOME # 9 STATE REFORESTATION AREA. CAT HOLLOW STATE FOREST.										
STAND	ACRES	FOREST TYPE	OBJECTIVE TYPE	DBH	MGT. DIR.	SPECIES	BASAL AREA	TREAT. TYPE	TREAT. YEAR	COMMENTS
22	6	NH	NH	SS	E	RM-HM	0	FW	2027+	
23	10	NH	NH	ST	U	WA-HM	98	ST	2025	Forest Tent Cat. Maple salvage 96
24	21	NH	NH	SS	E	WA-ASP	0	FW	2027+	
25	2	PH	PH	PT	ES	ASP-RM	75	GC	2005	cut 1 acre 2004 and 1 acre 2012
26	11	NH	NH	PT	U	RM-BC	127	TSI	2021	
27	37	NH	NH	PT	U	RM-HM	139	ST	2013	
28	2	NH	NH	SS	E	ASP-HM	0	TSI	2005	
29	3	NH	NH	PT	E	RM-HM	150	ST	2013	
30	4	BR	BR	BR	BR	BRUSH	0	RE	2013	
31	24	PH	PH	SS	ES	ASPEN	0	GC	2004	cut 3 acres every 8 years
32	6	POND	POND	-	ZW	POND	0	none	none	
33	6	BR	BR	-	BR	BRUSH	0	RE	2013	
34	4	HEM-NH	HEM-NH	PT	ZV	HEM-RM	196	none	none	
35	4	NH-OAK	NH-OAK	PT	E	HM-RO	140	ST	2013	
36	11	NH	NH	SS	E	RM	0	TSI	2027+	
37	10	NH	NH	ST	U	HM-RM	140	ST	2013	
38	1	NH	NH	SS	E	RM	0	TSI	2027+	
39	78	NH	NH	PT	U	RM-BE	110	ST	2021	
40	26	HEM-NH	HEM-NH	PT	ZV	HEM-RM	159	none	none	
41	10	NH	NH	SS	E	RM	0	TSI	2027+	
42	2	NH	NH	SS	E	RM	0	TSI	2027+	
43	7	NH	NH	ST	ZA	RM-HM	148	none	none	