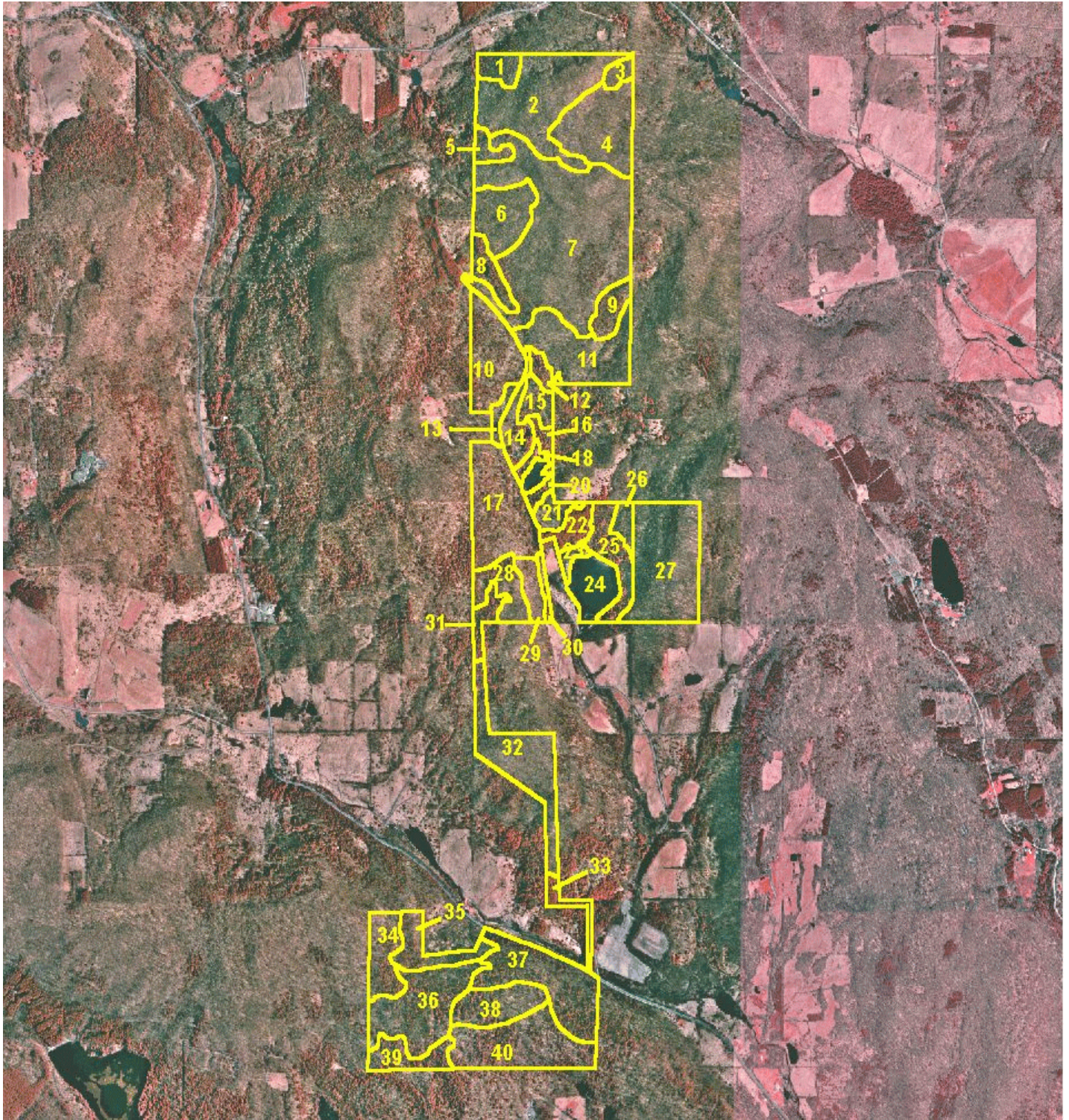


BROOME - 7 Beaver Pond  
Scale: 1 inch = 2350 Feet  
↑North  
1995 Photo





**BROOME # 7 STATE REFORESTATION AREA. BEAVER POND STATE FOREST.**

STAND	ACRES	FOREST TYPE	OBJECTIVE TYPE	DBH	MGT. DIR.	SPECIES	BASAL AREA	TREAT. TYPE	TREAT. YEAR	COMMENTS
1	7	NH-HEM	NH-HEM	PT	U	RM-HEM	158	ST	2008	
2	55	NH-OAK	NH-OAK	ST	U	RM-RO	139	ST	2008	Group selection.
3	4	NH	NH	PT	U	RM-HM	112	TSI	2008	
4	35	NH	NH	ST	U	HM-RM	132	ST	2008	
5	5	NH-HEM	NH-HEM	ST	U	RM-HEM	141	ST	2008	
6	22	PH	PH	PT	ES	ASP-RM	108	GC	2004	cut 2 acres every 8 years
7	123	NH-OAK	NH-OAK	ST	U	RM-RO	135	ST	2006	Group selection.
8	9	NH-HEM-OAK	NH-HEM-OAK	ST	U	HEM-RO	132	ST	2016	
9	9	NH-HEM-OAK	NH-HEM-OAK	ST	U	HEM-RM	156	ST	2016	
10	29	NH	NH	ST	U	RM-BE	142	ST	2016	
11	37	NH	NH	ST	U	HM-RM	117	ST	2016	
12	4	WP-NH	WP-NH	ST	U	WP-RM	136	ST	2016	
13	4	PH	PH	PT	ES	RM-ASP	73	GC	2027+	manage with stand 14
14	11	PH	PH	PT	ES	RM-ASP	98	GC	2004	cut 2 acres every 8 years
15	8	NH	NH-HEM	ST	U	BC-HM	141	ST	2012	Group selection.
16	4	HEM-NH	HEM-NH	ST	ZV	HEM-RM	120	none	none	
17	41	NH	NH-HEM	ST	U	HM-BE	121	ST	2022	
18	3	HEM	HEM	PT	ZV	HEM-RM	80	none	none	
19	4	WETLAND	WETLAND	-	ZW	WET	0	none	none	
20	3	HEM-NH	HEM-NH	ST	U	HEM-BC	167	ST	2022	
21	6	NH	NH	ST	U	HM-BC	97	ST	2022	Group selection.

BROOME # 7 STATE REFORESTATION AREA. BEAVER POND STATE FOREST.										
STAND	ACRES	FOREST TYPE	OBJECTIVE TYPE	DBH	MGT. DIR.	SPECIES	BASAL AREA	TREAT. TYPE	TREAT. YEAR	COMMENTS
22	9	RP	NH	PT	E	RP-RM	176	RT	2012	
23	3	NH	NH	SS	ZV	RM-BC	0	none	none	
24	17	POND	POND	-	ZW	POND	0	none	none	
25	17	NH-WP	NH-WP	ST	U	WP-RM	155	FW/TSI	2012	
26	5	NH-OAK	NH-OAK	ST	U	RM-RO	102	FW/TSI	2026	Group selection.
27	52	NH	NH	ST	U	HM-WA	107	ST	2026	
28	15	NH-OAK	NH-OAK	ST	U	RM-RO	146	ST	2010	Group selection.
29	8	NH	NH	ST	U	HM-BE	133	ST	2010	
30	3	PH	PH	PT	ES	ASP-RM	0	GC	2010	cut 1 acre every 8 years
31	7	HEM-NH	HEM-NH	ST	U	HEM-RM	188	ST	2010	
32	35	NH	NH-HEM	ST	U	BE-RM	136	ST	2010	
33	6	RP	NH-WP	PT	E	RP-WP	225	TSI	2012	
34	17	NH-HEM	NH-HEM	ST	U	HEM-RM	138	ST	2022	
35	15	NH	NH-HEM	ST	U	RM-HEM	140	ST	2022	
36	40	NH-HEM	NH-HEM	ST	U	HEM-BE	112	ST	2022	
37	42	NH-HEM	NH-HEM	ST+	ZS	HEM-HM	125	none	none	
38	20	NH-HEM	NH-HEM	ST	U	HEM-HM	96	ST	2026	
39	13	NH-HEM	NH-HEM	ST	U	HEM-RM	141	ST	2022	
40	41	NH-HEM	NH-HEM	ST	U	HEM-HM	90	ST	2026	