



# New York State Industrial Roundwood Production and Consumption Report-2002

This report summarizes the estimated industrial roundwood production (harvest) level from New York's forests, the consumption level of New York's primary wood processors, and the flow of roundwood to/from New York for the calendar year 2002.

Data was derived from several sources: (1) returned surveys; (2) secondary or reported data; and (3) estimates based on mill production capacities. Data reported for logs are conservative due to difficulties associated with collecting or estimating relatively small volumes of certain in-state and out of state/country consumption of roundwood harvested in New York.

### Definitions

**Industrial Roundwood:** Wood utilized by sawmills (fixed and portable), pulp mills, wood energy plants and other miscellaneous primary processors. Fuelwood for residential purposes is not included.

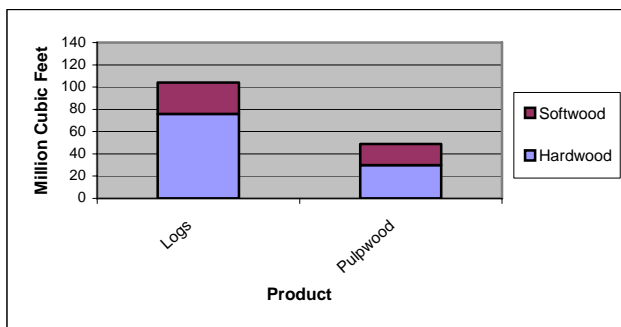
**Logs :** All types (e.g.–saw, veneer, bolter, pallet, scrag, poles, etc.).

**Pulpwood:** Roundwood and roundwood or whole tree derived fuel, pulp, and panel chips.

**Log Scale:** International ¼ inch

### Production

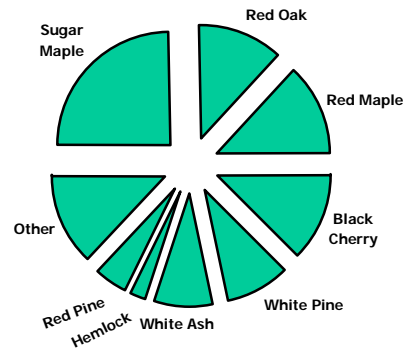
Total Production by Product and HW/SW, 2002



Total estimated log production was **797.7 million board feet (MMbf)** while pulpwood harvest level was **1.33 million green tons** (54% roundwood/46% chips).

According to returned surveys (accounting for 46% of total log production), 72% of New York's log harvest was in five species: sugar maple, red maple, red oak, black cherry and white pine. Sugar maple alone accounted for 25% of total production. 61% of pulpwood production was mixed hardwoods, while 39% was softwood. Softwood pulpwood species included mostly white pine, hemlock, and spruce.

Species Breakdown—Survey Reported Log Production, 2002



### Consumption

Approximately 240 fixed, traditional sawmills operated during 2002. An additional 30 mills reported receiving no wood for the year. 130 of these mills have a capacity of 1MMbf or more, while 140 process less than 1MMbf.

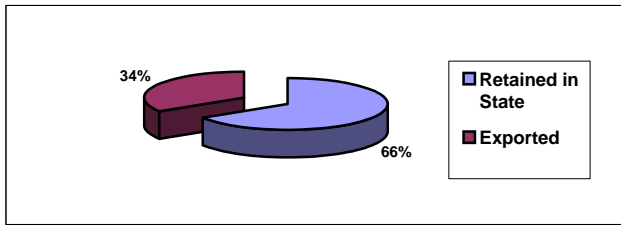
All together (reported volumes and estimates), traditional mills consumed **504 million board feet** of logs, of which around 94% was from New York State production. In addition, around 1,500 portable and various other unaccounted for sawmills were known to exist. It is estimated that these mills consumed about **60 million board feet**, with a vast majority of log receipts likely coming from New York production.

New York facilities consumed about **806,855 green tons** of pulpwood products from New York's forests.

(over)

## Export

*Percent of Total New York Production Exported, 2002*



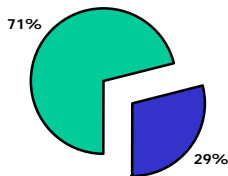
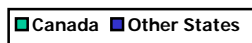
The chart above indicates that approximately 34%, or **52.6 million cubic feet**, of New York's production was exported. 65% of this volume was logs, while the remaining 35% was pulpwood products.

The volume above does not include overseas exports of logs. Difficulty in surveying log concentration yards and identifying contents of containers through export documentation account for this data gap. Although no estimates of overseas log exports were made for this report, published and anecdotal evidence suggests that these exports, although high in value, are a relatively minor component of the overall harvest level.

The chart below shows about two-thirds of total exported volume was shipped to Canada.

**Combined, about one-third of New York's log and pulpwood harvest was exported.**

*Disposition of Exports—All Products, 2002*



Canada is the largest importer of New York's industrial roundwood harvest, importing **37.4 million cubic feet** in 2002. Breakdown of this volume by product type and species group is as follows:

Logs : **205.5 MMbf** (53% HW--47% SW)

Pulpwood: **323,500 green tons** (100% HW)

Combined, Pennsylvania and Vermont consumed most of the balance of reported imports of New York wood to other states. Together, other states reported importing approximately **15.2 million cubic feet**. The following indicates breakdown by product type:

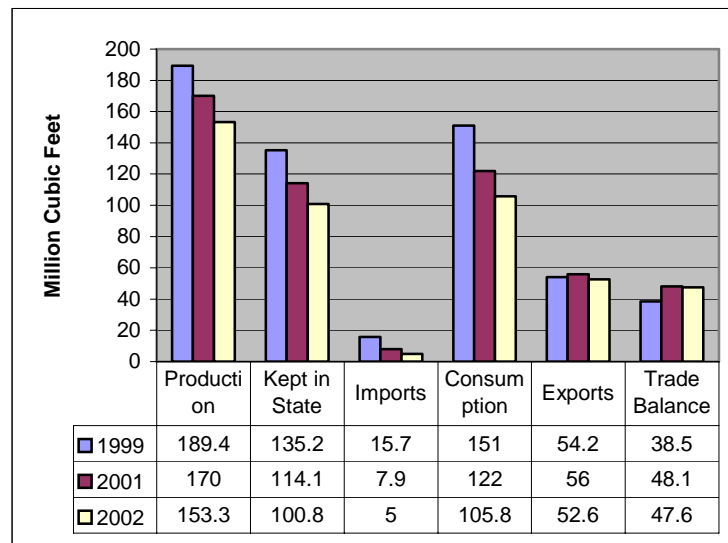
Logs: **47.5 MMbf** (73% HW--27% SW)

Pulpwood: **204,000 green tons** (56% HW--44% SW)

Additionally, minor, unreported volumes of logs were exported to several states in the New England, Mid-Atlantic and Mid-West regions of the US. No attempt was made to estimate this volume.

## Summary

*Summary—Production, Consumption, and Trade, Total Roundwood , 1999, 2001, 2002*



Produced by:

NYS Department of Environmental Conservation  
 Forest Products Utilization Program  
 625 Broadway  
 Albany, NY 12233-4253

*Questions or Comments to:*

*Sloane Crawford, Forest Products Utilization Specialist  
 (518) 402-9415*