



New York State Department of

ENVIRONMENTAL CONSERVATION

www.dec.ny.gov

Public Fishing Rights Maps

Twelve Mile Creek and East Branch



East Branch Twelve Mile Creek near Route 18

Description of Fishery

Twelve Mile Creek and its East Branch flow through northern Niagara County to their mouths at Lake Ontario, near the village of Wilson. From fall through spring, the creeks receive good runs of steelhead and brown trout from Lake Ontario with some stray Chinook and Coho Salmon mixed in. Good trout and salmon runs are highly dependant on stream flow. There are 6.1 miles of public fishing rights easements on these streams. Additionally, access to both streams is available in Wilson-Tuscarora State Park. The town of Wilson provides a boat launching ramp on Twelve Mile Creek, and there is public access to the Wilson Public Pier at the mouth of Tuscarora Bay. The streams also provide anglers with opportunities to catch warmwater species such as northern pike, largemouth bass, bluegill, bullhead and yellow perch. In winter, ice fishing opportunities are available in Tuscarora Bay.

Trout and Salmon Fishing Regulations

Twelve Mile Creek and East Branch from mouths upstream to first impassable falls: **Trout and salmon; open all year, 15 inch minimum size except 21 inch minimum for rainbow trout or steelhead, daily limit of 3 per person not to include more than 1 rainbow trout or steelhead.**

Check fishing regulation guide for other Great Lakes tributary regulations that may apply.

Primary Fish Species

Rainbow Trout

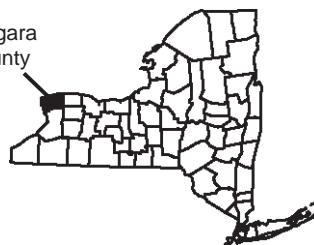


Brown Trout



Location

Niagara County



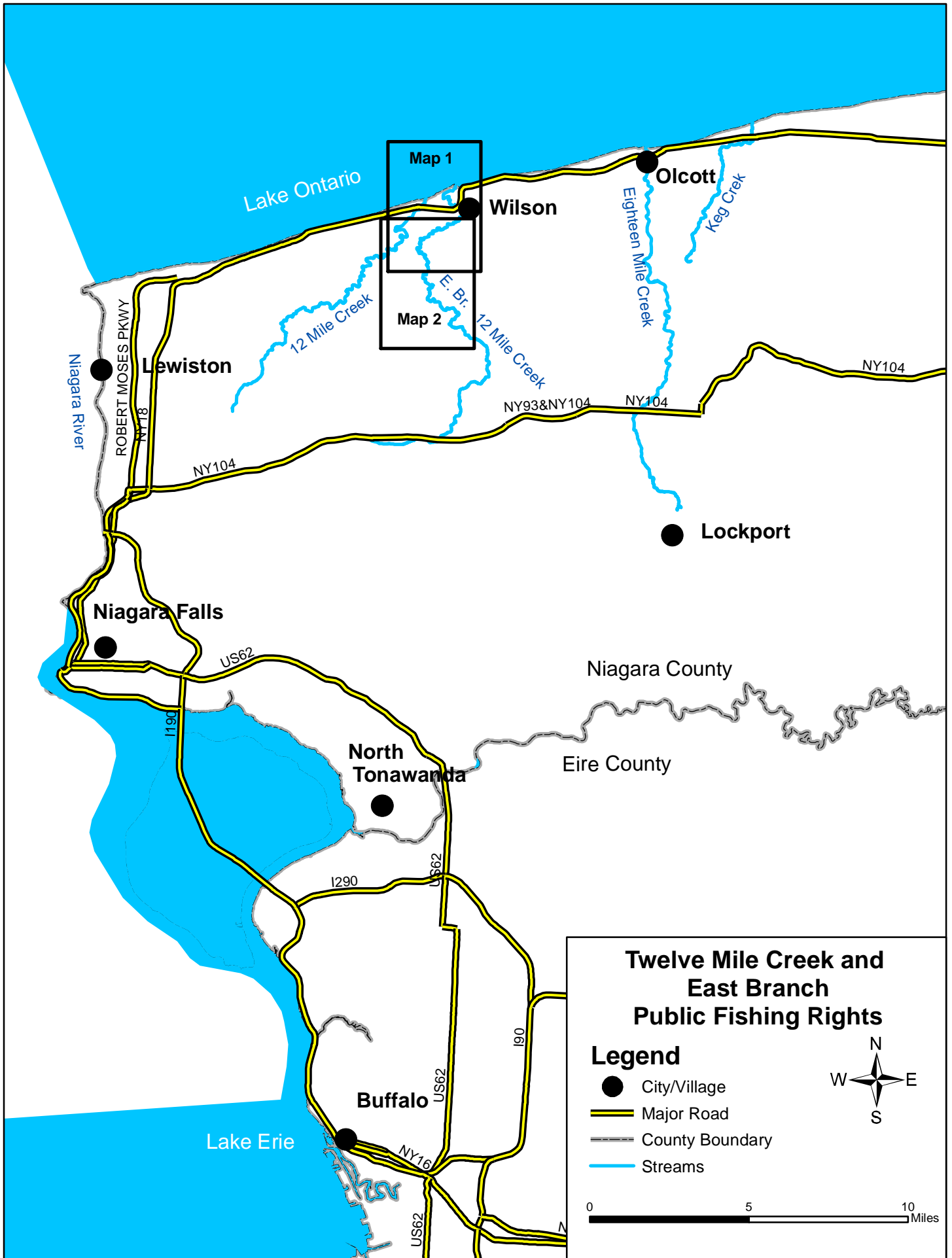
About Public Fishing Rights

Public Fishing Rights (PFR's) are permanent easements purchased by the NYSDEC from willing landowners, giving anglers the right to fish and walk along the bank (usually a 33' strip on one or both banks of the stream). This right is for the purpose of fishing only and no other purpose. Treat the land with respect to insure the continuation of this right and privilege. Fishing privileges may be available on some other private lands with permission of the land owner. Courtesy toward the land-owner and respect for their property will insure their continued use.

These generalized location maps are intended to aid anglers in finding PFR segments and are not survey quality. Width of displayed PFR may be wider than reality to make it more visible on the maps. Please look for this PFR sign to ensure that you are in the right location and have legal access to the stream bank.



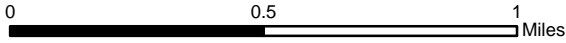
For more information on this creek or if you believe PFR marked areas on these maps are incorrect or missing PFR signs, please call the Region 9 Fisheries office: (716) 372-0645.



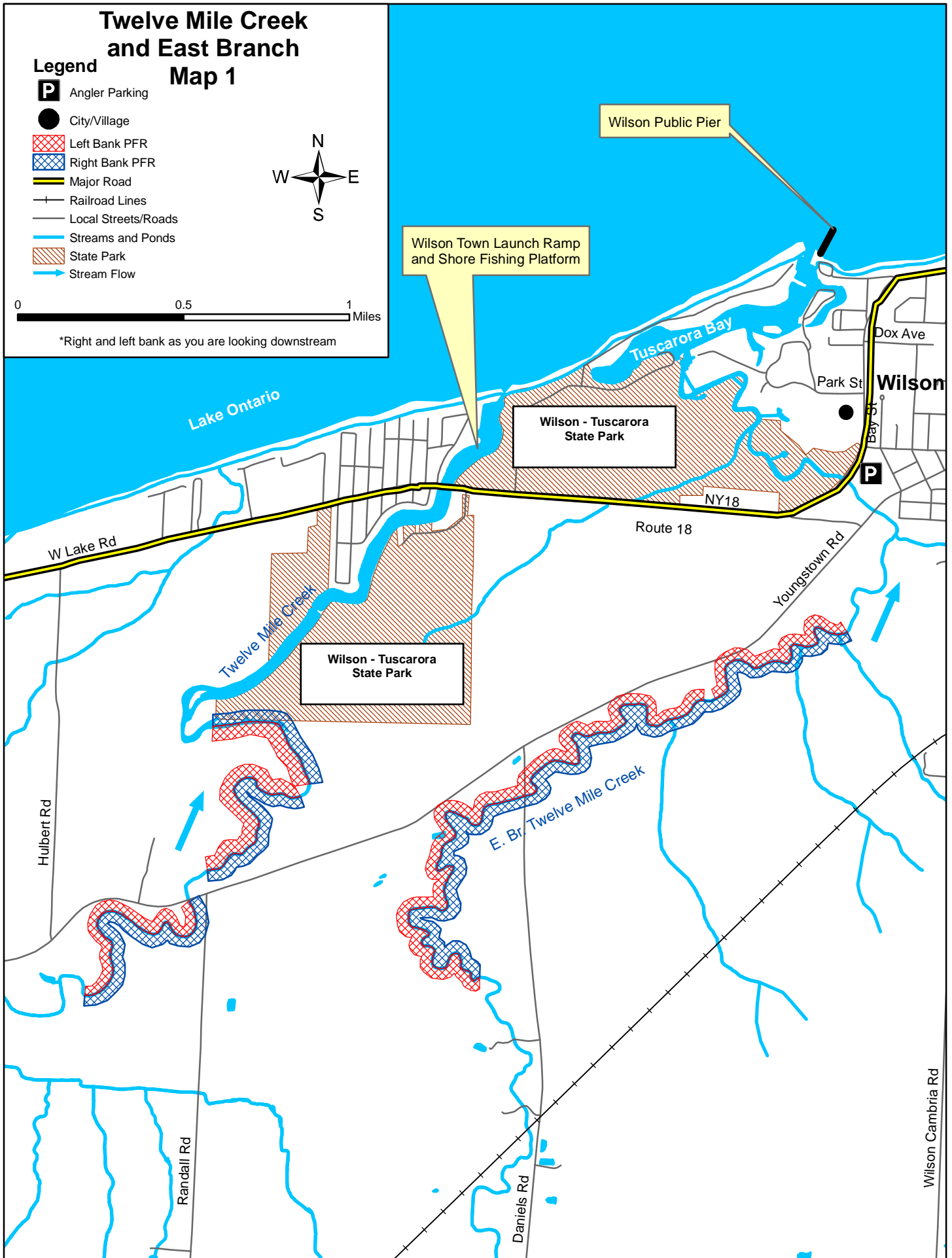
Twelve Mile Creek and East Branch Map 1

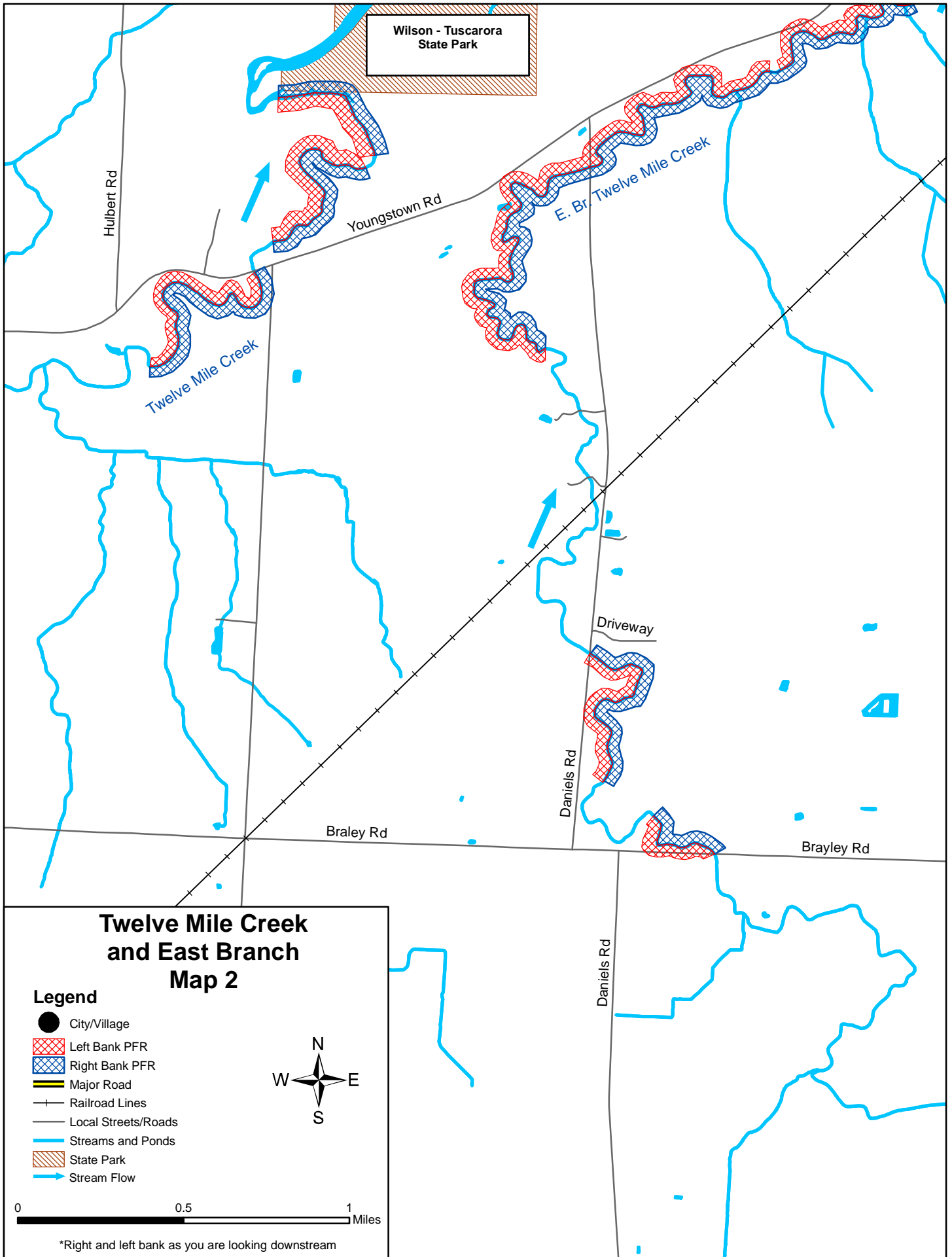
Legend

-  Angler Parking
-  City/Village
-  Left Bank PFR
-  Right Bank PFR
-  Major Road
-  Railroad Lines
-  Local Streets/Roads
-  Streams and Ponds
-  State Park
-  Stream Flow



*Right and left bank as you are looking downstream





Twelve Mile Creek and East Branch Map 2

Legend

- City/Village
- ▨ Left Bank PFR
- ▨ Right Bank PFR
- ▬ Major Road
- +— Railroad Lines
- Local Streets/Roads
- Streams and Ponds
- ▨ State Park
- ➔ Stream Flow



0 0.5 1 Miles

*Right and left bank as you are looking downstream