



New York State Department of

ENVIRONMENTAL CONSERVATION

www.dec.ny.gov

Public Fishing Rights Maps

Ninemile Creek

Description of Fishery

Ninemile Creek is located in Onondaga County near the towns of Camillus and Marcellus. There are 4.3 miles of Public Fishing Rights (PFR's) along this medium sized mostly open stream. Ninemile Creek is a popular fly fishing location. Both wild brown trout and the occasional wild brook trout are found in the stream. The stream is also stocked annually by Onondaga County's Carpenter's Brook Fish Hatchery with around 11,500 one year-old brown trout (8-9"), 4,300 two year-old brown trout (12-14") and 2,280 one year-old brook trout (9-11").

Fishing Regulations

Statewide Angling Regulations apply **EXCEPT** as noted below:

Trout - Any Size, Limit 5 with no more than 2 longer than 12", April 1 - Oct 15

Fish Species Present

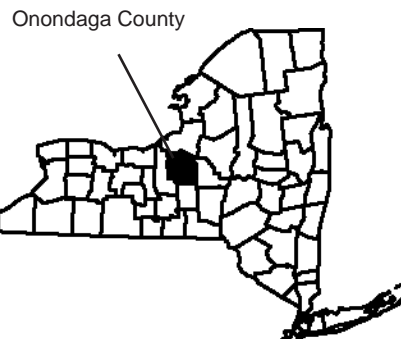
Brown Trout



Brook Trout



Location



About Public Fishing Rights

Public Fishing Rights (PFR's) are permanent easements purchased by the NYSDEC from willing landowners, giving anglers the right to fish and walk along the bank (usually a 33' strip on one or both banks of the stream). This right is for the purpose of fishing only and no other purpose. Treat the land with respect to insure the continuation of this right and privilege. Fishing privileges may be available on some other private lands with permission of the land owner. Courtesy toward the land-owner and respect for their property will insure their continued use.

These generalized location maps are intended to aid anglers in finding PFR segments and are not survey quality. Width of displayed PFR may be wider than reality to make it more visible on the maps. Please look for this PFR sign to ensure that you are in the right location and have legal access to the stream bank.

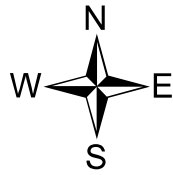


For more information on this creek or if you believe PFR marked areas on these maps are incorrect or missing PFR signs, please call the Region 7 Fisheries office: (607) 753-3095 ext. 213.

Ninemile Creek Public Fishing Rights Areas

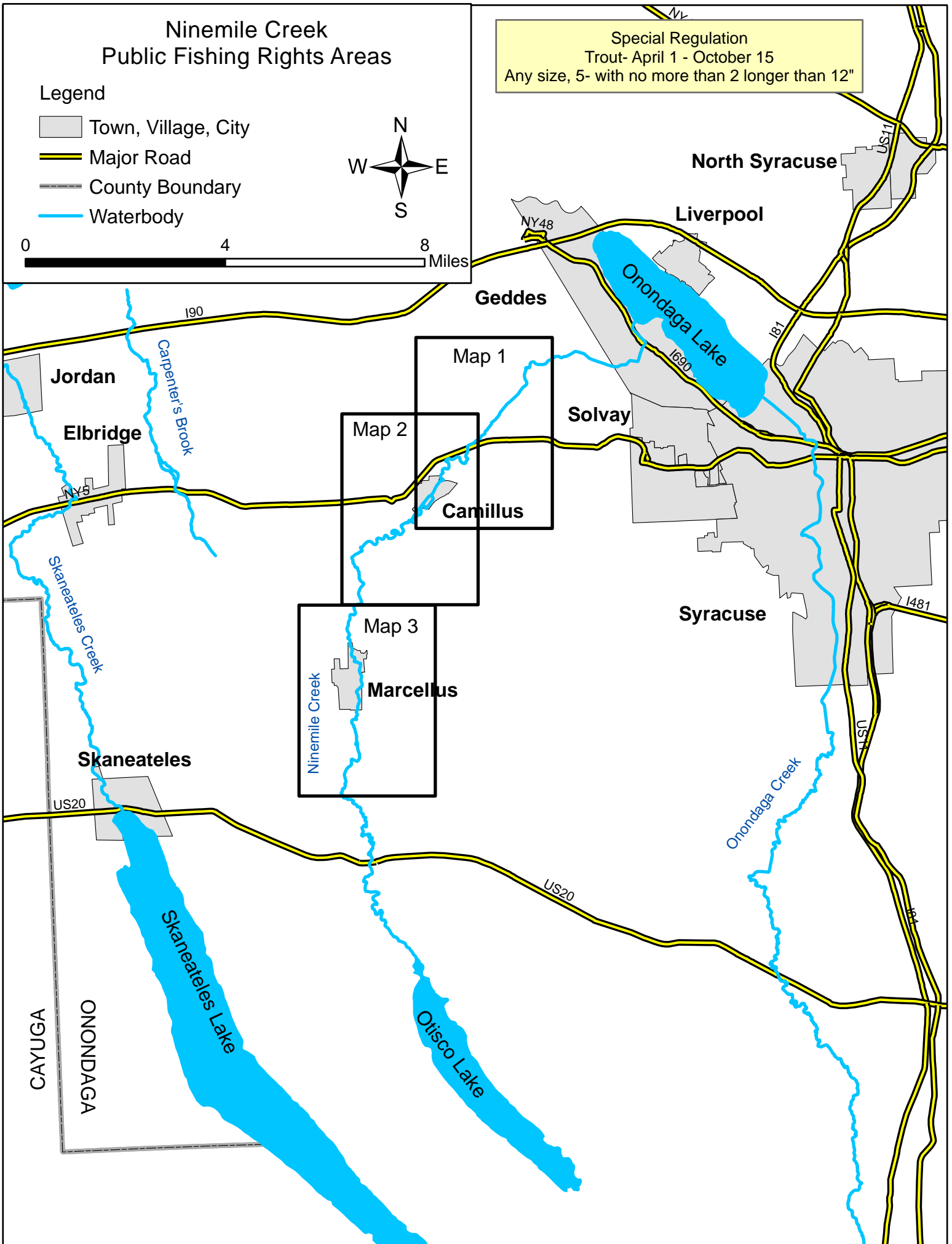
Legend

- Town, Village, City
- Major Road
- County Boundary
- Waterbody



0 4 8 Miles

Special Regulation
Trout- April 1 - October 15
Any size, 5- with no more than 2 longer than 12"

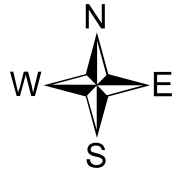


Ninemile Creek Map 1

Public Fishing Rights Areas

Legend

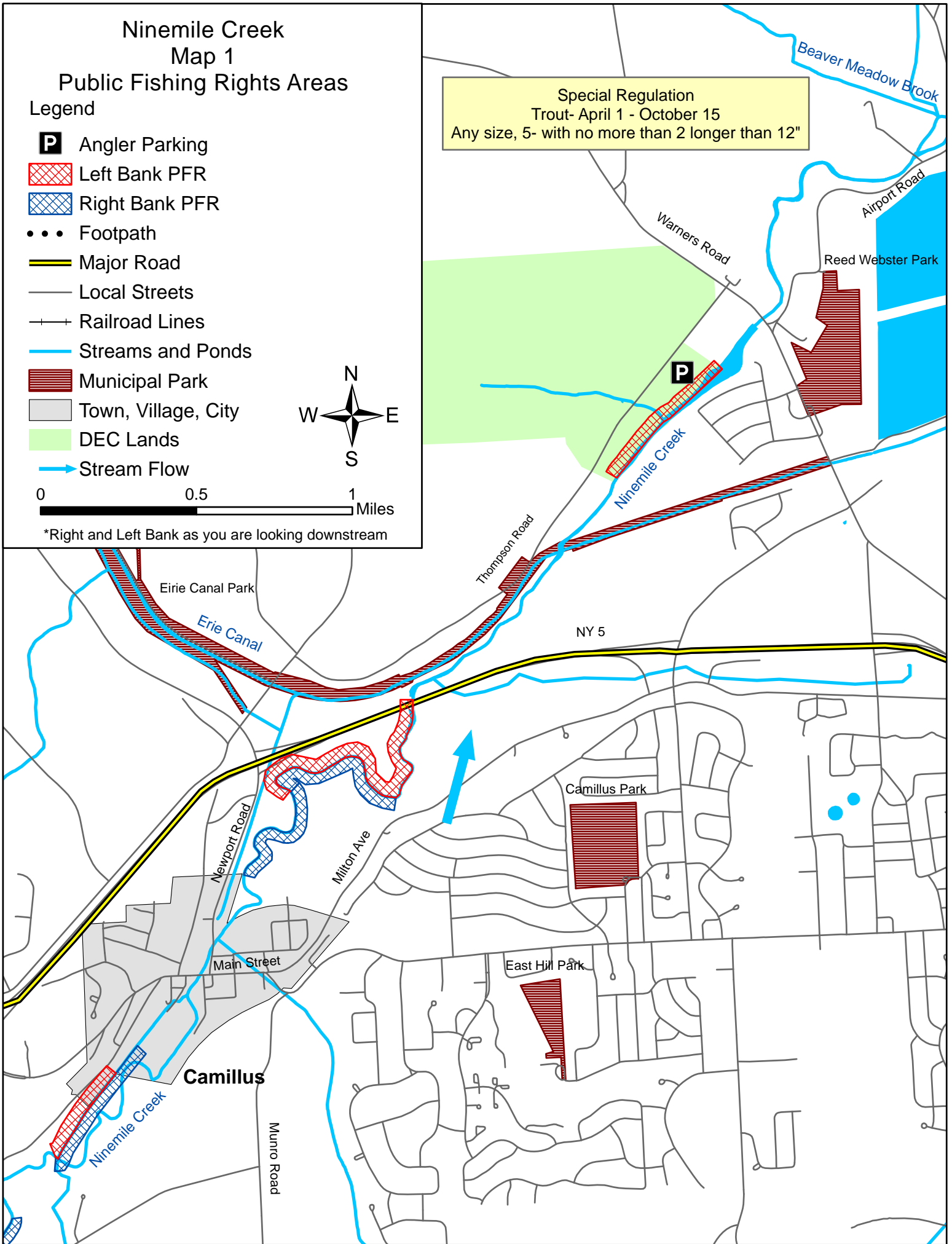
- P** Angler Parking
-  Left Bank PFR
-  Right Bank PFR
- Footpath
-  Major Road
-  Local Streets
-  Railroad Lines
-  Streams and Ponds
-  Municipal Park
-  Town, Village, City
-  DEC Lands
-  Stream Flow



0 0.5 1 Miles

*Right and Left Bank as you are looking downstream

Special Regulation
Trout- April 1 - October 15
Any size, 5- with no more than 2 longer than 12"



Ninemile Creek

Map 2

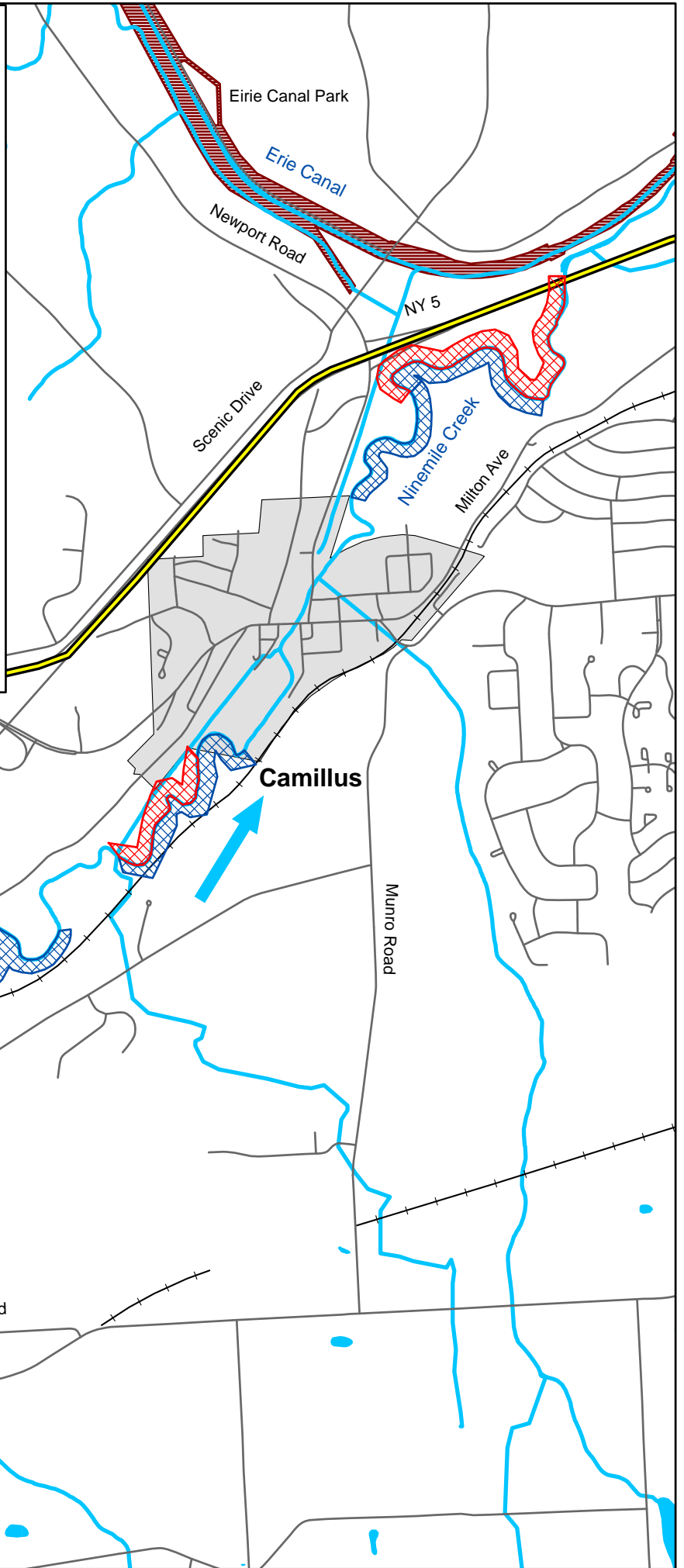
Public Fishing Rights Areas

Legend

- P** Angler Parking
-  Left Bank PFR
-  Right Bank PFR
- Footpath
-  Major Road
-  Local Streets
-  Railroad Lines
-  Streams and Ponds
-  Municipal Parks
-  Town, Village, City
-  DEC Lands
-  Stream Flow

0 0.5 1 Miles

*Right and Left Bank as you are looking downstream



Special Regulation
Trout- April 1 - October 15
Any size, 5- with no more than 2 longer than 12"

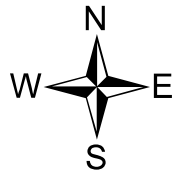
Ninemile Creek

Map 3

Public Fishing Rights Areas

Legend

-  Angler Parking
-  Left Bank PFR
-  Right Bank PFR
-  Footpath
-  Major Road
-  Local Streets
-  Railroad Lines
-  Streams and Ponds
-  Municipal Park
-  Town, Village, City
-  DEC Lands
-  Stream Flow



0 0.5 1 Miles

*Right and Left Bank as you are looking downstream

Special Regulation
Trout- April 1 - October 15
Any size, 5- with no more than 2 longer than 12"

