



New York State Department of

ENVIRONMENTAL CONSERVATION

www.dec.ny.gov

Public Fishing Rights Maps

Mad River and Tributaries

Description of Fishery

The Mad River is located partially in Oswego, Jefferson and Lewis counties. There are 6.6 miles of Public Fishing Rights (PFR's) along this large, tree lined stream. The Mad River section in Lewis County is stocked annually with around 400 brook trout. Wild brook trout can be found in the rest of the river.

Fishing Regulations

Statewide Angling Regulations apply **EXCEPT** as noted below:

Trout - Any Size, Limit 5 with no more than 2 longer than 12", April 1 - Oct 15

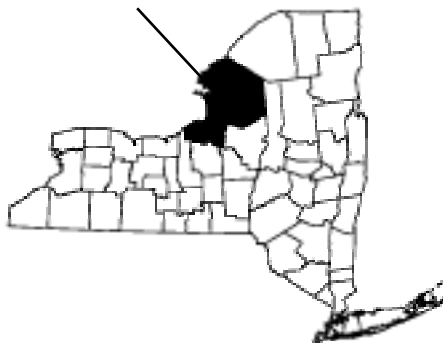
Fish Species Present

Brook Trout



Location

Jefferson, Lewis
and Oswego Counties



About Public Fishing Rights

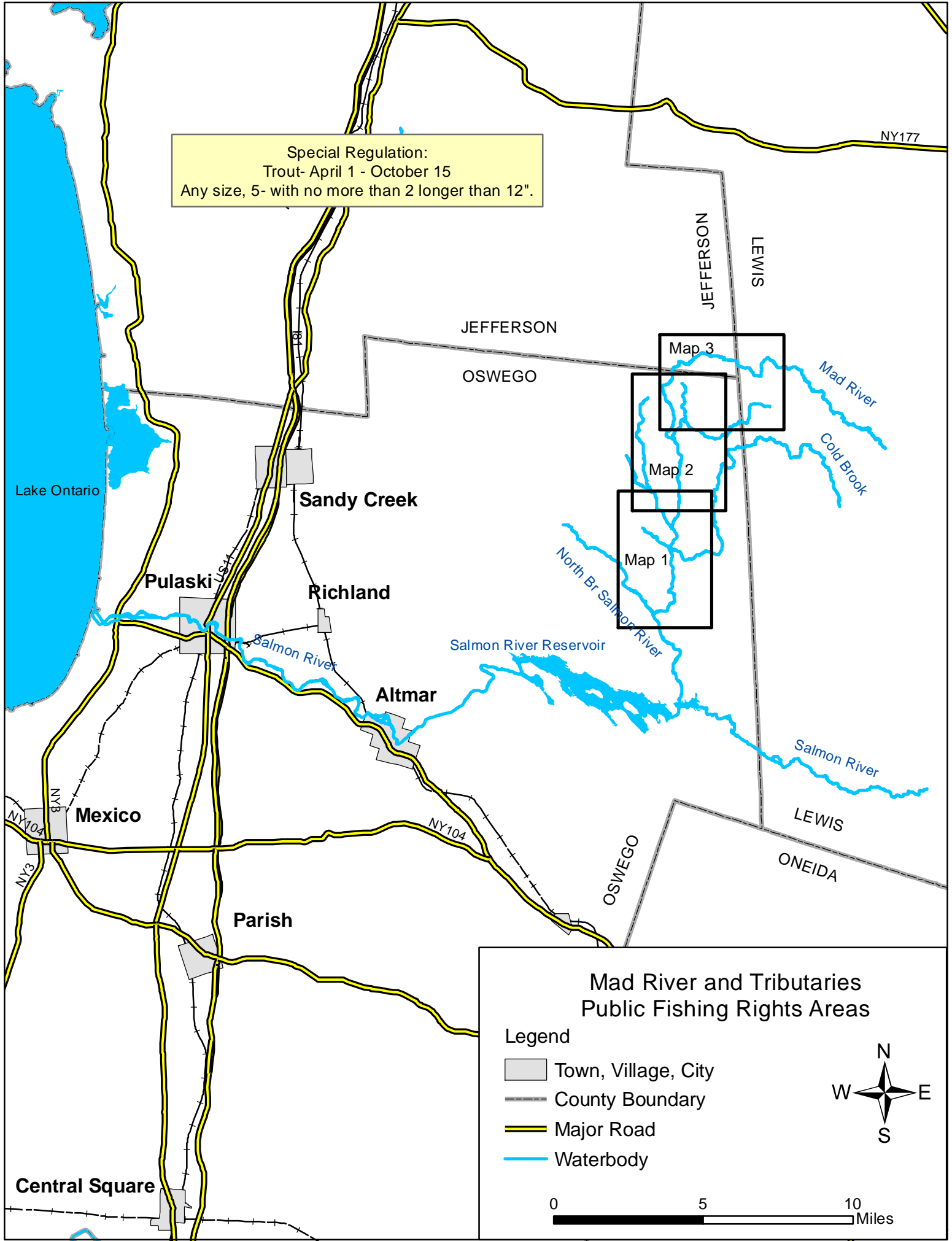
Public Fishing Rights (PFR's) are permanent easements purchased by the NYSDEC from willing landowners, giving anglers the right to fish and walk along the bank (usually a 33' strip on one or both banks of the stream). This right is for the purpose of fishing only and no other purpose. Treat the land with respect to insure the continuation of this right and privilege. Fishing privileges may be available on some other private lands with permission of the land owner. Courtesy toward the land-owner and respect for their property will insure their continued use.

These generalized location maps are intended to aid anglers in finding PFR segments and are not survey quality. Width of displayed PFR may be wider than reality to make it more visible on the maps. Please look for this PFR sign to ensure that you are in the right location and have legal access to the stream bank.



For more information on this creek or if you believe PFR marked areas on these maps are incorrect or missing PFR signs, please call the Region 7 Fisheries office: (607) 753-3095 ext. 213.

Special Regulation:
Trout- April 1 - October 15
Any size, 5- with no more than 2 longer than 12".



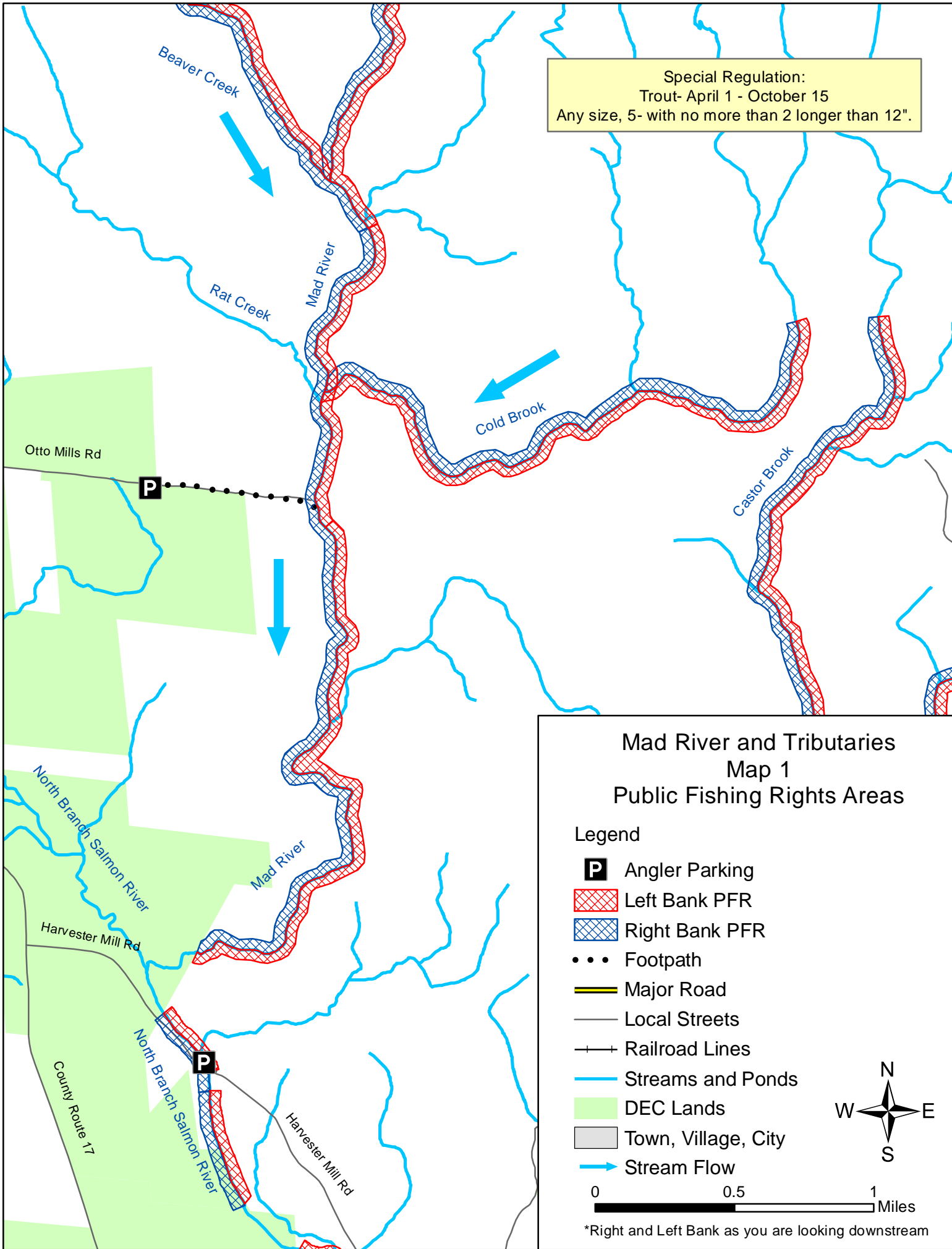
**Mad River and Tributaries
Public Fishing Rights Areas**

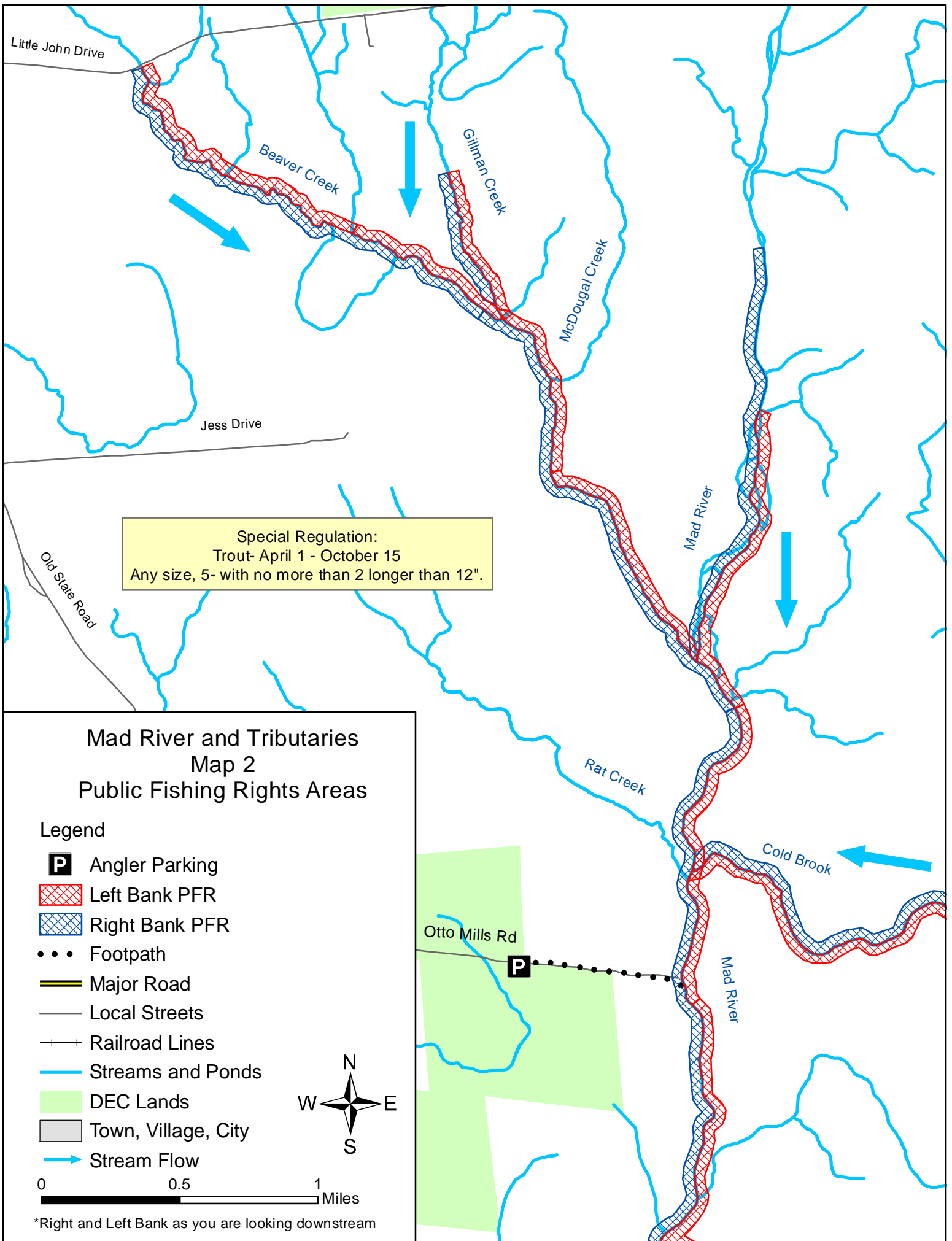
Legend

- Town, Village, City
- County Boundary
- Major Road
- Waterbody

0 5 10 Miles

Special Regulation:
Trout- April 1 - October 15
Any size, 5- with no more than 2 longer than 12".

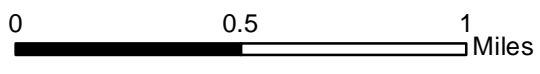




Mad River and Tributaries Map 2 Public Fishing Rights Areas

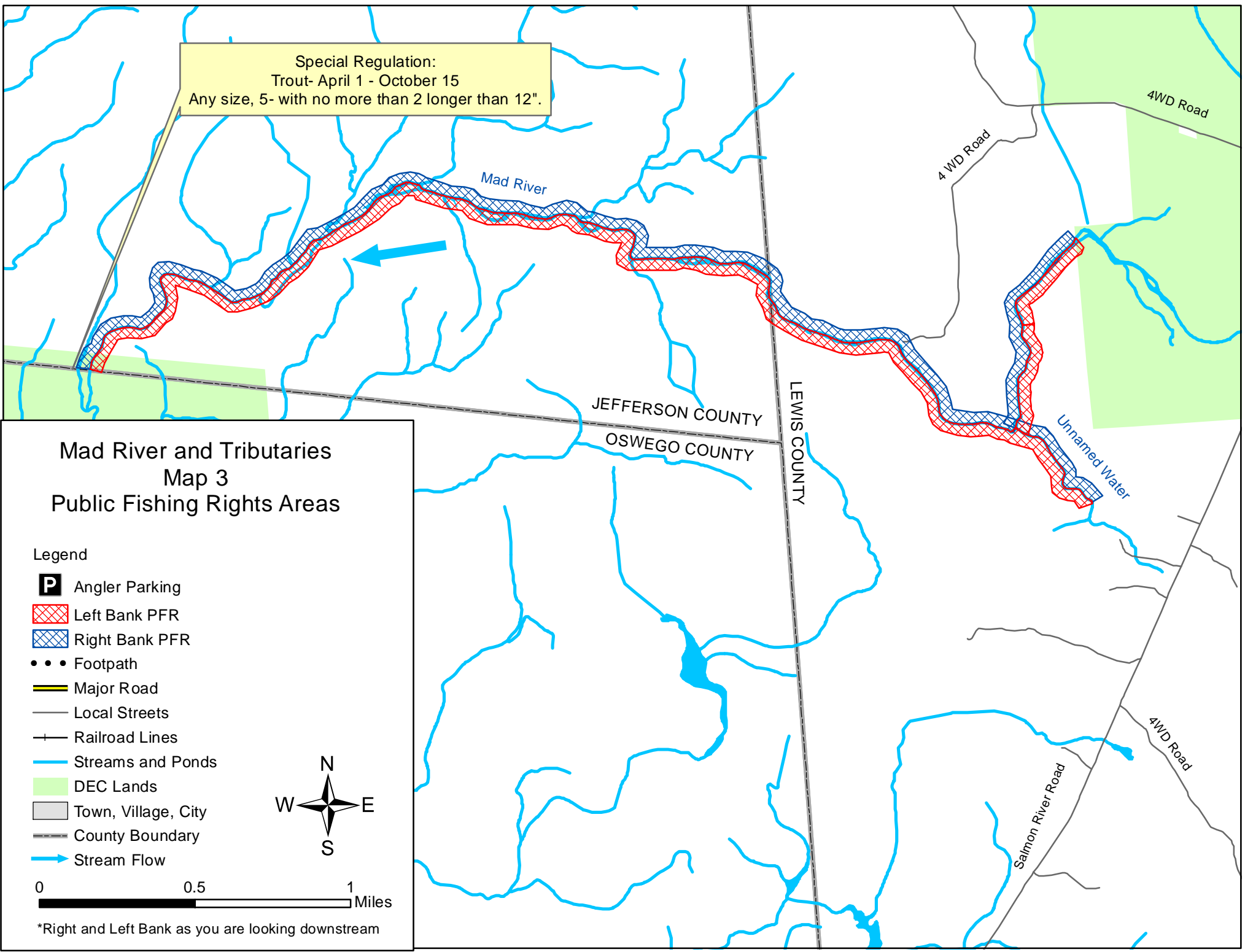
Legend

- P** Angler Parking
- Left Bank PFR
- Right Bank PFR
- Footpath
- Major Road
- Local Streets
- Railroad Lines
- Streams and Ponds
- DEC Lands
- Town, Village, City
- Stream Flow



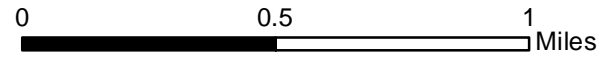
*Right and Left Bank as you are looking downstream

Special Regulation:
Trout- April 1 - October 15
Any size, 5- with no more than 2 longer than 12".



Mad River and Tributaries Map 3 Public Fishing Rights Areas

- Legend
- Angler Parking
 - Left Bank PFR
 - Right Bank PFR
 - Footpath
 - Major Road
 - Local Streets
 - Railroad Lines
 - Streams and Ponds
 - DEC Lands
 - Town, Village, City
 - County Boundary
 - Stream Flow



*Right and Left Bank as you are looking downstream