



New York State Department of

ENVIRONMENTAL CONSERVATION

www.dec.ny.gov

Public Fishing Rights Maps

Fall Creek

Description of Fishery

Fall Creek is located in Cayuga and Tompkins Counties and stretches from Lake Como to Ithaca, where it runs into Cayuga Lake. There are 10.9 miles of Public Fishing Rights (PFR's) along Fall Creek. The upper section of Fall Creek is stocked annually with around 2,500 brook trout (8-9"), and the lower section gets around 5,400 brown trout (8-9"). Brown trout, brook trout and smallmouth bass are the main game fish above Ithaca Falls. Below Ithaca Falls the fishery is a Finger Lakes Tributary fishery where lake run rainbow trout, brown trout, Atlantic salmon and smallmouth bass are the main species.

Fishing Regulations

Statewide Angling Regulations apply **EXCEPT** as noted below:

Trout - Any Size, Limit 5 with no more than 2 longer than 12", April 1 - Oct 15

EXCEPT from Rte 38 bridge at Freeville UPSTREAM to bridge at Groton City where season is all year.

Black Bass - From Ithaca falls upstream, All year, Any size, Daily limit 5

From Ithaca Falls Downstream Finger Lakes Regulations Apply

Fish Species Present

Brown Trout



Brook Trout

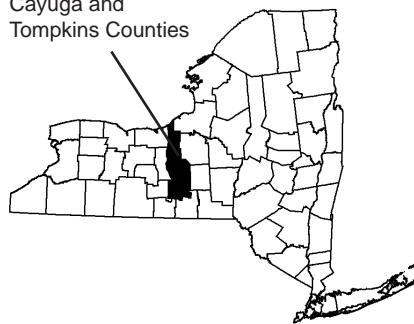


Smallmouth Bass



Location

Cayuga and Tompkins Counties



About Public Fishing Rights

Public Fishing Rights (PFR's) are permanent easements purchased by the NYSDEC from willing landowners, giving anglers the right to fish and walk along the bank (usually a 33' strip on one or both banks of the stream). This right is for the purpose of fishing only and no other purpose. Treat the land with respect to insure the continuation of this right and privilege. Fishing privileges may be available on some other private lands with permission of the land owner. Courtesy toward the land-owner and respect for their property will insure their continued use.





These generalized location maps are intended to aid anglers in finding PFR segments and are not survey quality. Width of displayed PFR may be wider than reality to make it more visible on the maps. Please look for this PFR sign to ensure that you are in the right location and have legal access to the stream bank.

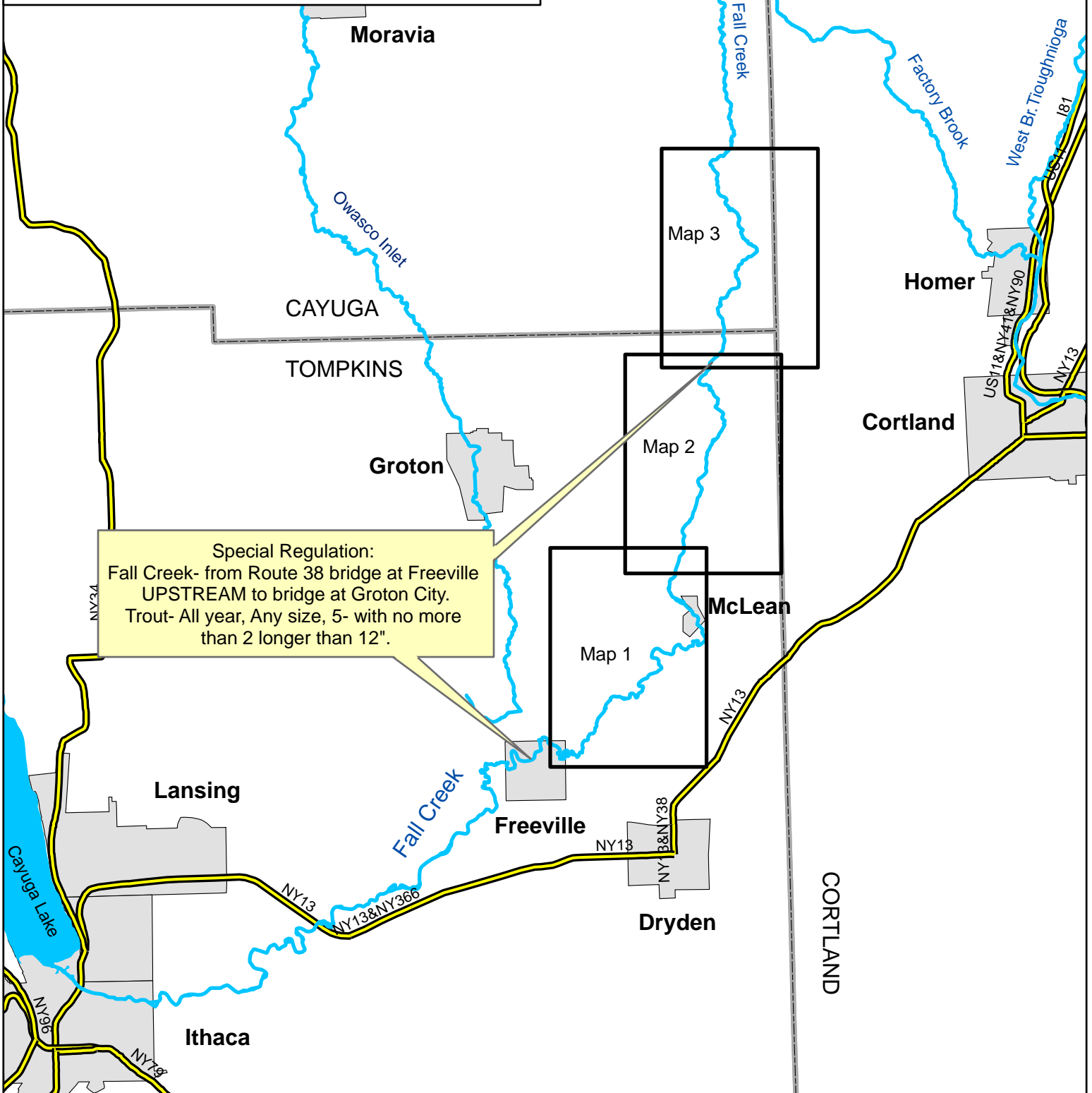
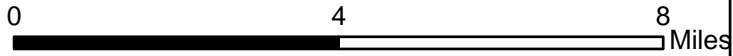


For more information on this creek or if you believe PFR marked areas on these maps are incorrect or missing PFR signs, please call the Region 7 Fisheries office: (607) 753-3095 ext. 213.

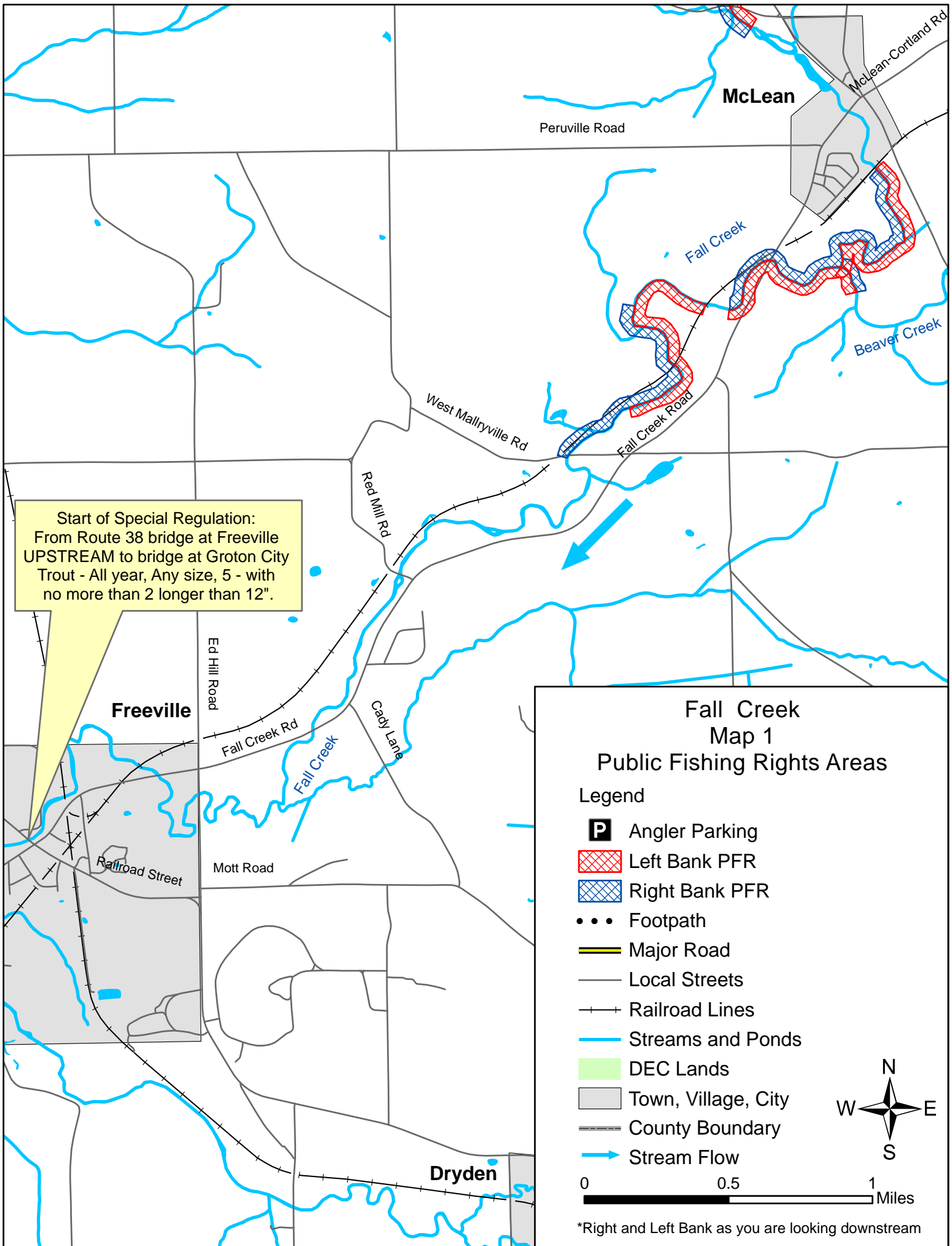
Fall Creek Public Fishing Rights Areas

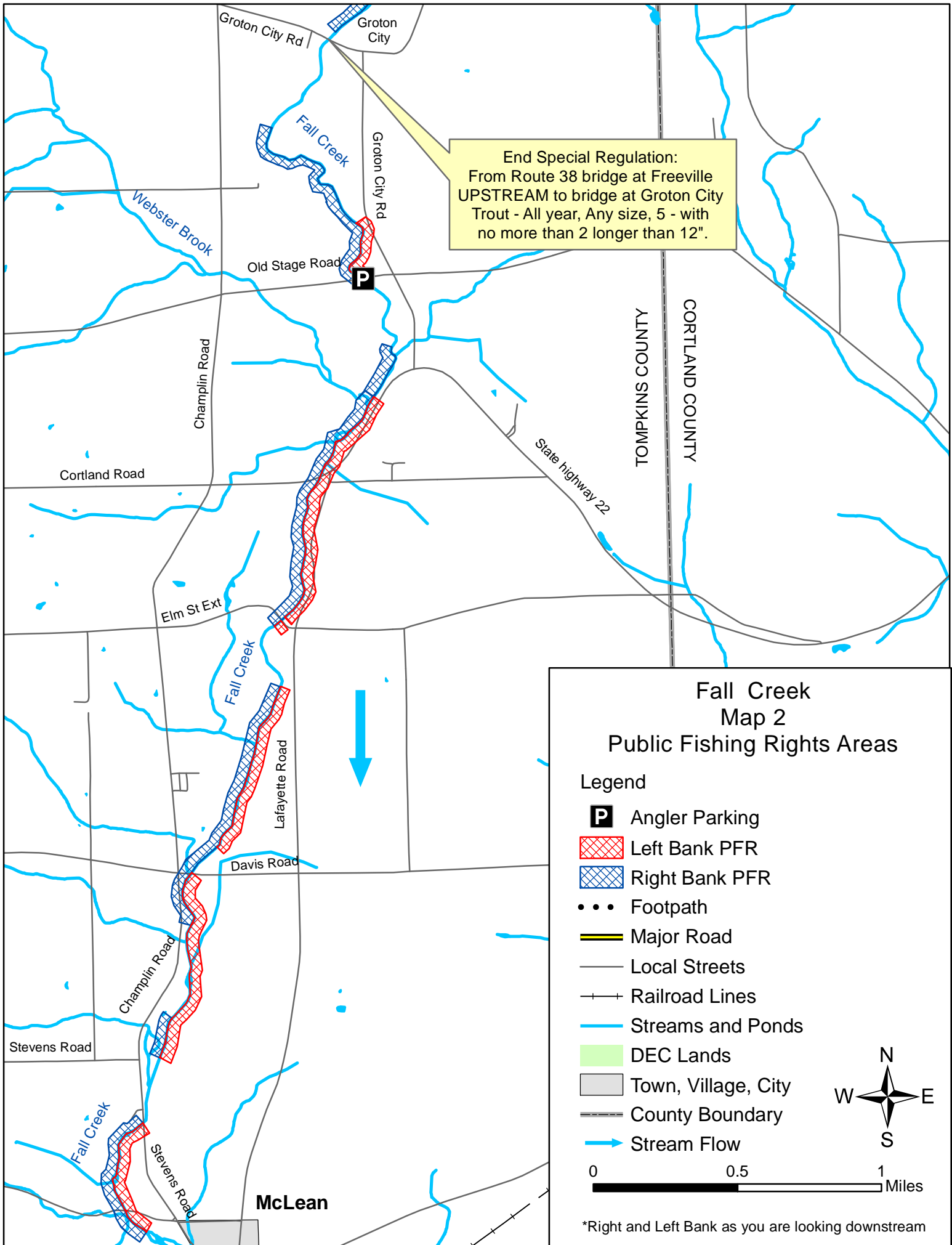
Legend

-  Town, Village, City
-  County Boundary
-  Major Road
-  Waterbody



Special Regulation:
 Fall Creek- from Route 38 bridge at Freeville
 UPSTREAM to bridge at Groton City.
 Trout- All year, Any size, 5- with no more
 than 2 longer than 12".



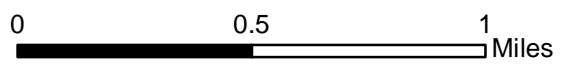


End Special Regulation:
 From Route 38 bridge at Freeville
 UPSTREAM to bridge at Groton City
 Trout - All year, Any size, 5 - with
 no more than 2 longer than 12".

Fall Creek Map 2 Public Fishing Rights Areas

Legend

- P** Angler Parking
-  Left Bank PFR
-  Right Bank PFR
-  Footpath
-  Major Road
-  Local Streets
-  Railroad Lines
-  Streams and Ponds
-  DEC Lands
-  Town, Village, City
-  County Boundary
-  Stream Flow

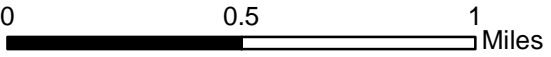
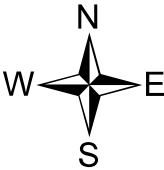


*Right and Left Bank as you are looking downstream

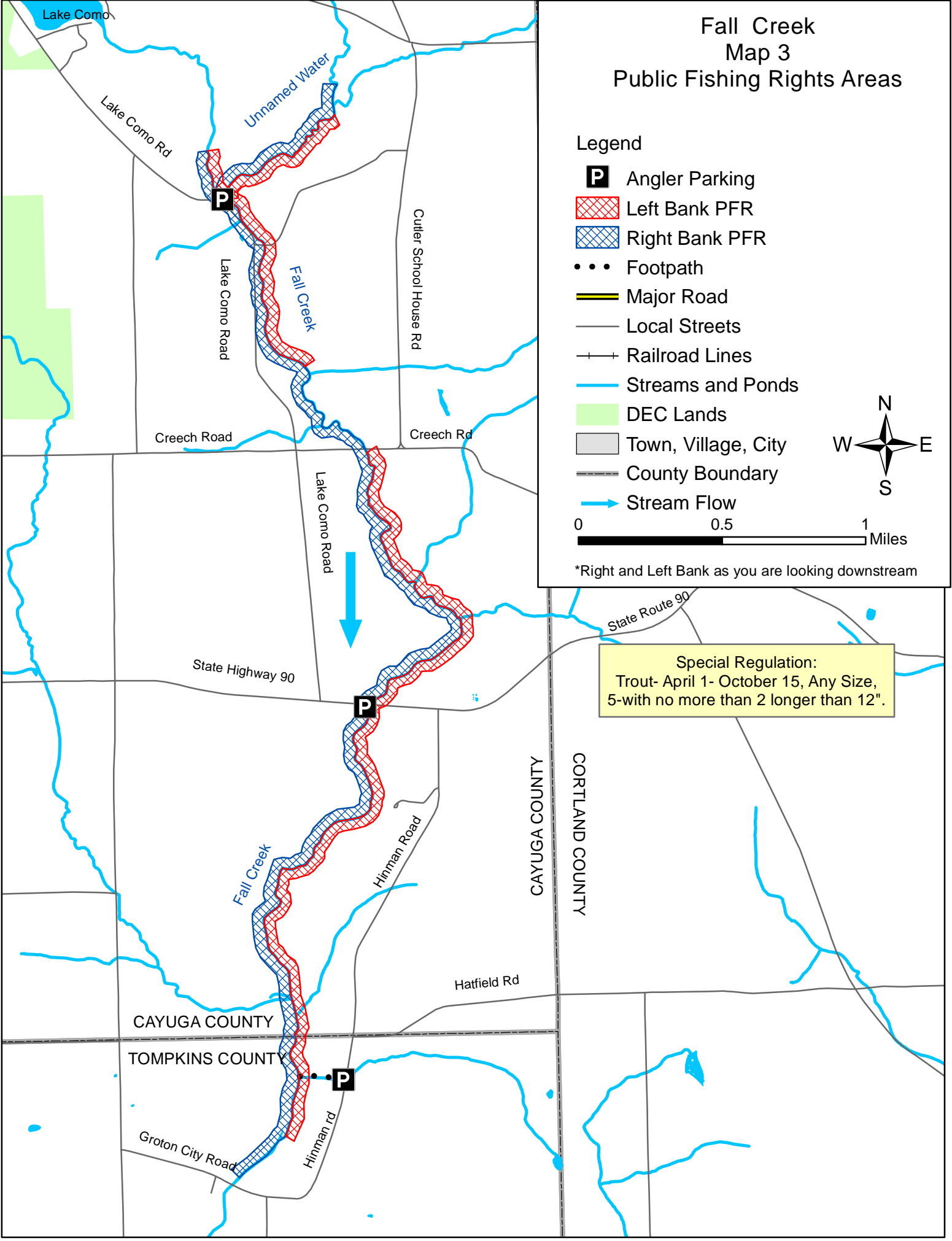
Fall Creek Map 3 Public Fishing Rights Areas

Legend

- P** Angler Parking
-  Left Bank PFR
-  Right Bank PFR
-  Footpath
-  Major Road
-  Local Streets
-  Railroad Lines
-  Streams and Ponds
-  DEC Lands
-  Town, Village, City
-  County Boundary
-  Stream Flow



*Right and Left Bank as you are looking downstream



Special Regulation:
Trout- April 1- October 15, Any Size,
5-with no more than 2 longer than 12".