

New York State Department of

ENVIRONMENTAL CONSERVATION

www.dec.ny.gov

Public Fishing Rights Maps

Carpenter's Brook

Description of Fishery

Carpenter's Brook is located in Onondaga County near the town of Elbridge. There are 0.8 miles of Public Fishing Rights (PFR's) along this small sized brush lined stream. Carpenter's Brook is located below Onondaga County's Carpenter's Brook Fish Hatchery and is stocked annually by the hatchery with around 1,530 one year-old brown trout (8-9") and 650 two year-old brown trout (12-14"). The occasional wild brook trout may also be found in the stream.

Fishing Regulations

Statewide Angling Regulations apply **EXCEPT** as noted below:

Trout - Any Size, Limit 5 with no more than 2 longer than 12", April 1 - Oct 15

Fish Species Present

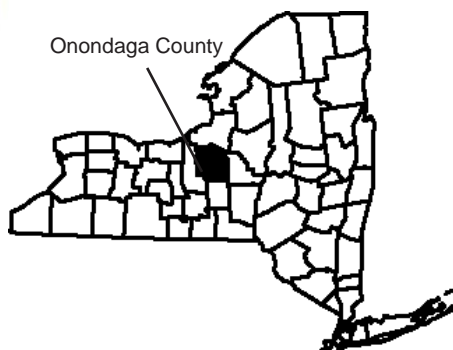
Brown Trout



Brook Trout



Location



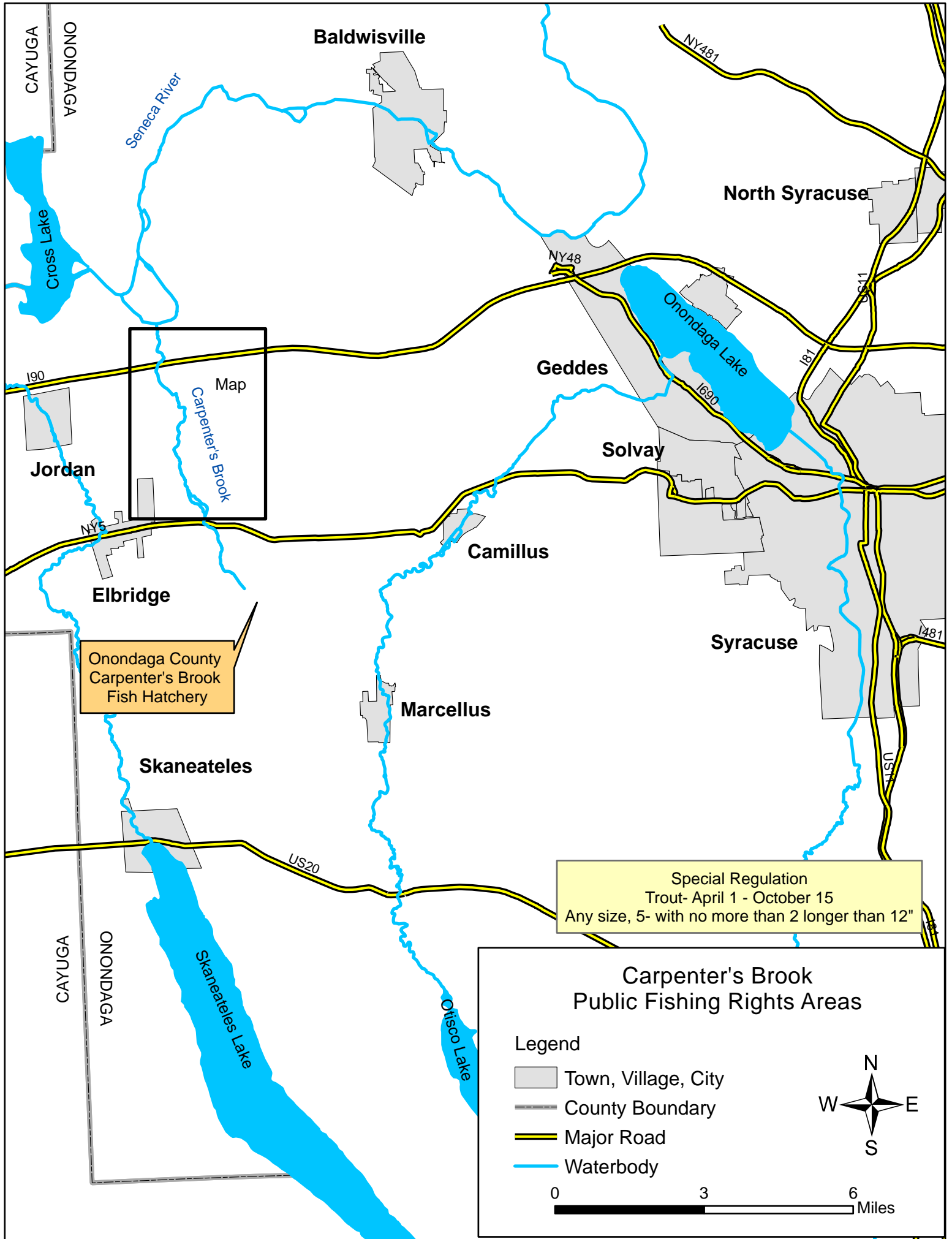
About Public Fishing Rights

Public Fishing Rights (PFR's) are permanent easements purchased by the NYSDEC from willing landowners, giving anglers the right to fish and walk along the bank (usually a 33' strip on one or both banks of the stream). This right is for the purpose of fishing only and no other purpose. Treat the land with respect to insure the continuation of this right and privilege. Fishing privileges may be available on some other private lands with permission of the land owner. Courtesy toward the land-owner and respect for their property will insure their continued use.

These generalized location maps are intended to aid anglers in finding PFR segments and are not survey quality. Width of displayed PFR may be wider than reality to make it more visible on the maps. Please look for this PFR sign to ensure that you are in the right location and have legal access to the stream bank.



For more information on this creek or if you believe PFR marked areas on these maps are incorrect or missing PFR signs, please call the Region 7 Fisheries office: (607) 753-3095 ext. 213.



Map
Carpenter's Brook

Onondaga County
Carpenter's Brook
Fish Hatchery

Special Regulation
Trout- April 1 - October 15
Any size, 5- with no more than 2 longer than 12"

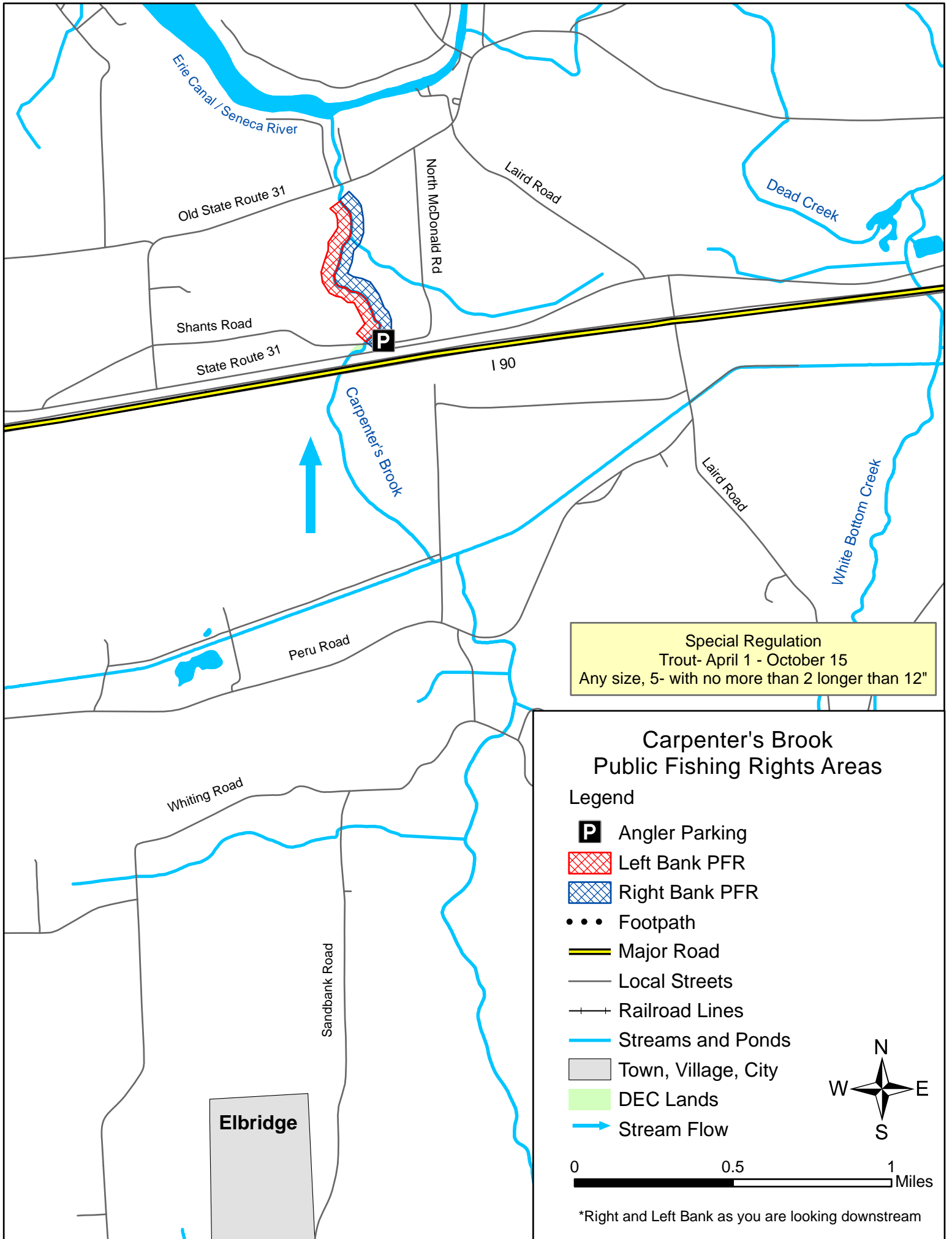
Carpenter's Brook Public Fishing Rights Areas

Legend

- Town, Village, City
- County Boundary
- Major Road
- Waterbody

N
W —+— E
S









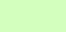

0 3 6
Miles

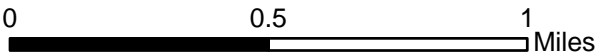


Special Regulation
 Trout- April 1 - October 15
 Any size, 5- with no more than 2 longer than 12"

Carpenter's Brook Public Fishing Rights Areas

Legend

- P** Angler Parking
-  Left Bank PFR
-  Right Bank PFR
-  Footpath
-  Major Road
-  Local Streets
-  Railroad Lines
-  Streams and Ponds
-  Town, Village, City
-  DEC Lands
-  Stream Flow



*Right and Left Bank as you are looking downstream