



New York State Department of

ENVIRONMENTAL CONSERVATION

www.dec.ny.gov

Public Fishing Rights Maps

Butternut Creek

Description of Fishery

Butternut Creek is located in Onondaga County and stretches from Apulia Station, flows through Jamesville Reservoir and then combines with Chittenago Creek at Minoa. There are 8.1 miles of Public Fishing Rights (PFR's) along this medium sized stream. Both wild and stocked brown trout, along with stocked and the occasional wild brook trout can be found in the creek. Butternut Creek is stocked annually by Onondaga County's Carpenter's Brook Fish Hatchery with around 5,200 one year-old brown trout (8-9"), 2,400 two year-old brown trout (12-14") and 600 brook trout (8-10").

Fishing Regulations

Statewide Angling Regulations apply **EXCEPT** as noted below:

Trout - Any Size, Limit 5 with no more than 2 longer than 12", April 1 - Oct 15

EXCEPT Butternut Creek Mouth to Route 20 where season is ALL YEAR

Fish Species Present

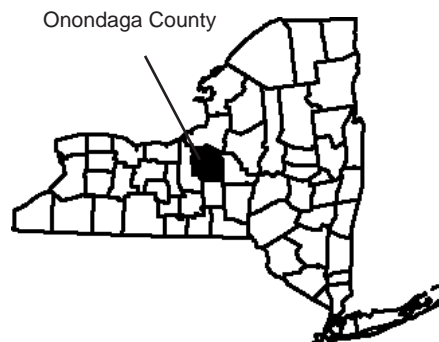
Brown Trout



Brook Trout



Location



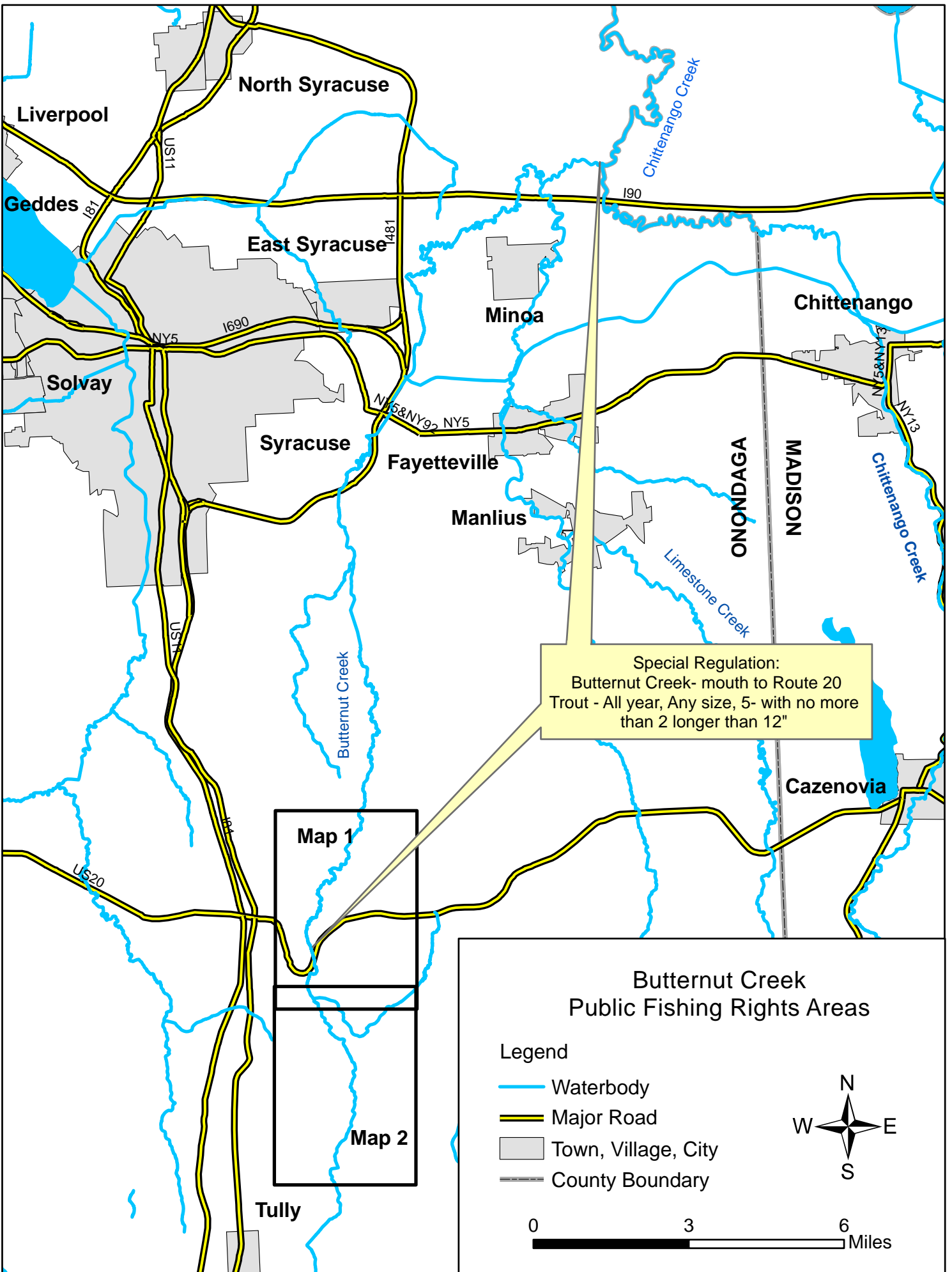
About Public Fishing Rights

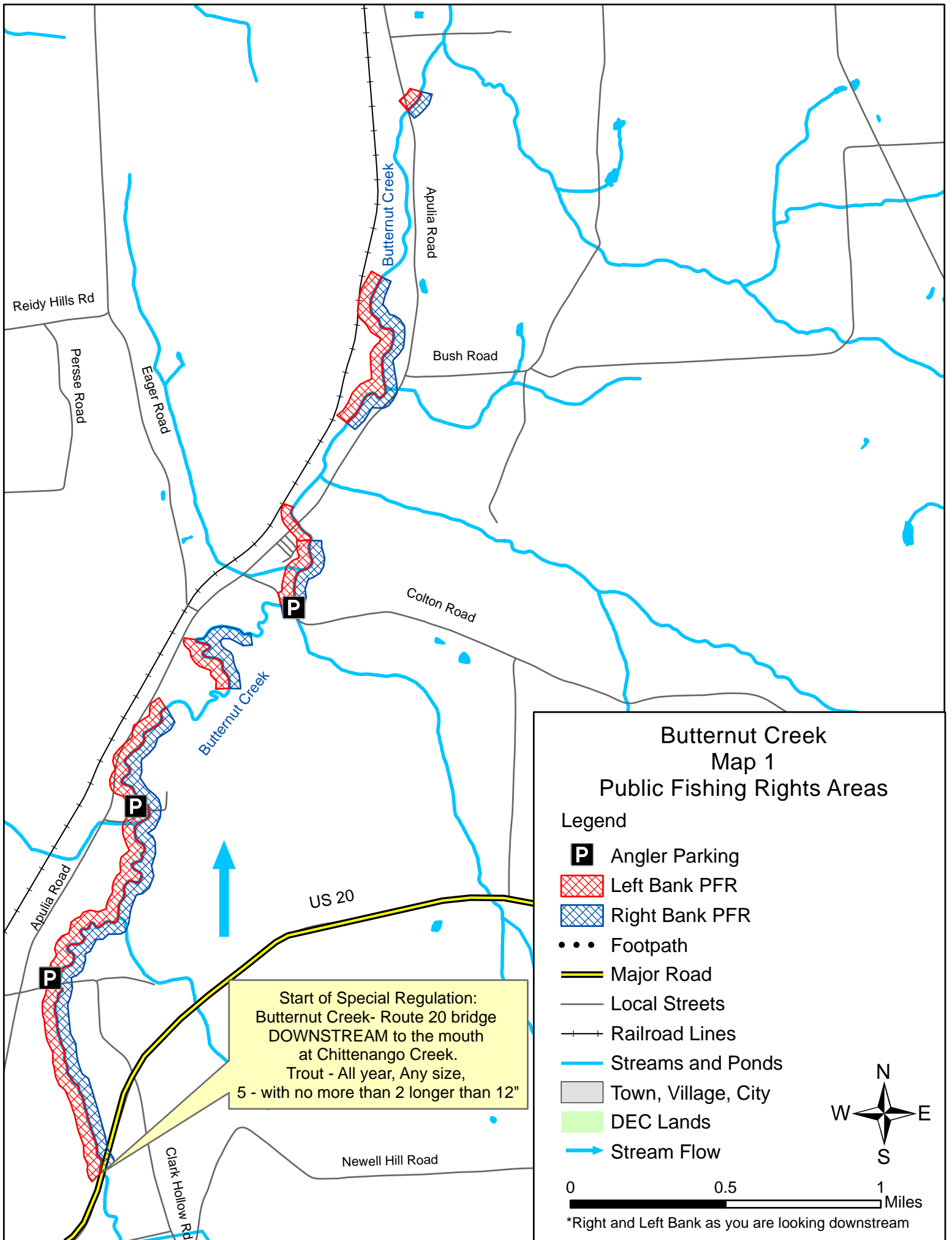
Public Fishing Rights (PFR's) are permanent easements purchased by the NYSDEC from willing landowners, giving anglers the right to fish and walk along the bank (usually a 33' strip on one or both banks of the stream). This right is for the purpose of fishing only and no other purpose. Treat the land with respect to insure the continuation of this right and privilege. Fishing privileges may be available on some other private lands with permission of the land owner. Courtesy toward the land-owner and respect for their property will insure their continued use.

These generalized location maps are intended to aid anglers in finding PFR segments and are not survey quality. Width of displayed PFR may be wider than reality to make it more visible on the maps. Please look for this PFR sign to ensure that you are in the right location and have legal access to the stream bank.



For more information on this creek or if you believe PFR marked areas on these maps are incorrect or missing PFR signs, please call the Region 7 Fisheries office: (607) 753-3095 ext. 213.





Butternut Creek Map 1 Public Fishing Rights Areas

Legend

- P** Angler Parking
- Left Bank PFR
- Right Bank PFR
- Footpath
- Major Road
- Local Streets
- Railroad Lines
- Streams and Ponds
- Town, Village, City
- DEC Lands
- Stream Flow

Start of Special Regulation:
Butternut Creek- Route 20 bridge
DOWNSTREAM to the mouth
at Chittenango Creek.
Trout - All year, Any size,
5 - with no more than 2 longer than 12"

0 0.5 1 Miles

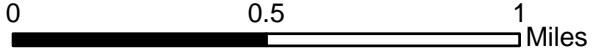
*Right and Left Bank as you are looking downstream



Butternut Creek Map 2 Public Fishing Rights Areas

Legend

- P** Angler Parking
- Left Bank PFR
- Right Bank PFR
- Footpath
- Major Road
- Local Streets
- Railroad Lines
- Streams and Ponds
- Town, Village, City
- DEC Lands
- Stream Flow



*Right and Left Bank as you are looking downstream

