

New York State Department of

ENVIRONMENTAL CONSERVATION

www.dec.ny.gov

Public Fishing Rights Maps

Bush Kill

Fish Species Present

Brown Trout



Brook Trout



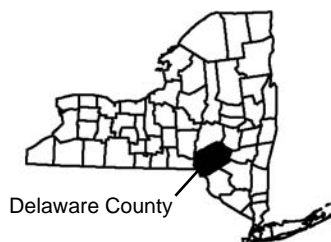
Description of Fishery

The Bush Kill is a five mile long wild brown trout stream that flows into the East Branch of the Delaware River near the village of Margaretville. Brown trout from Pepacton Reservoir use this stream for spawning, and some of these large (20 inches or larger) trout stay in the stream instead of returning to the reservoir. Brook trout are present in low numbers in the upper reaches.

Note:

The stream is managed under special regulations: 9 inch minimum size and an April 1 through September 30 open season.

Location



Delaware County

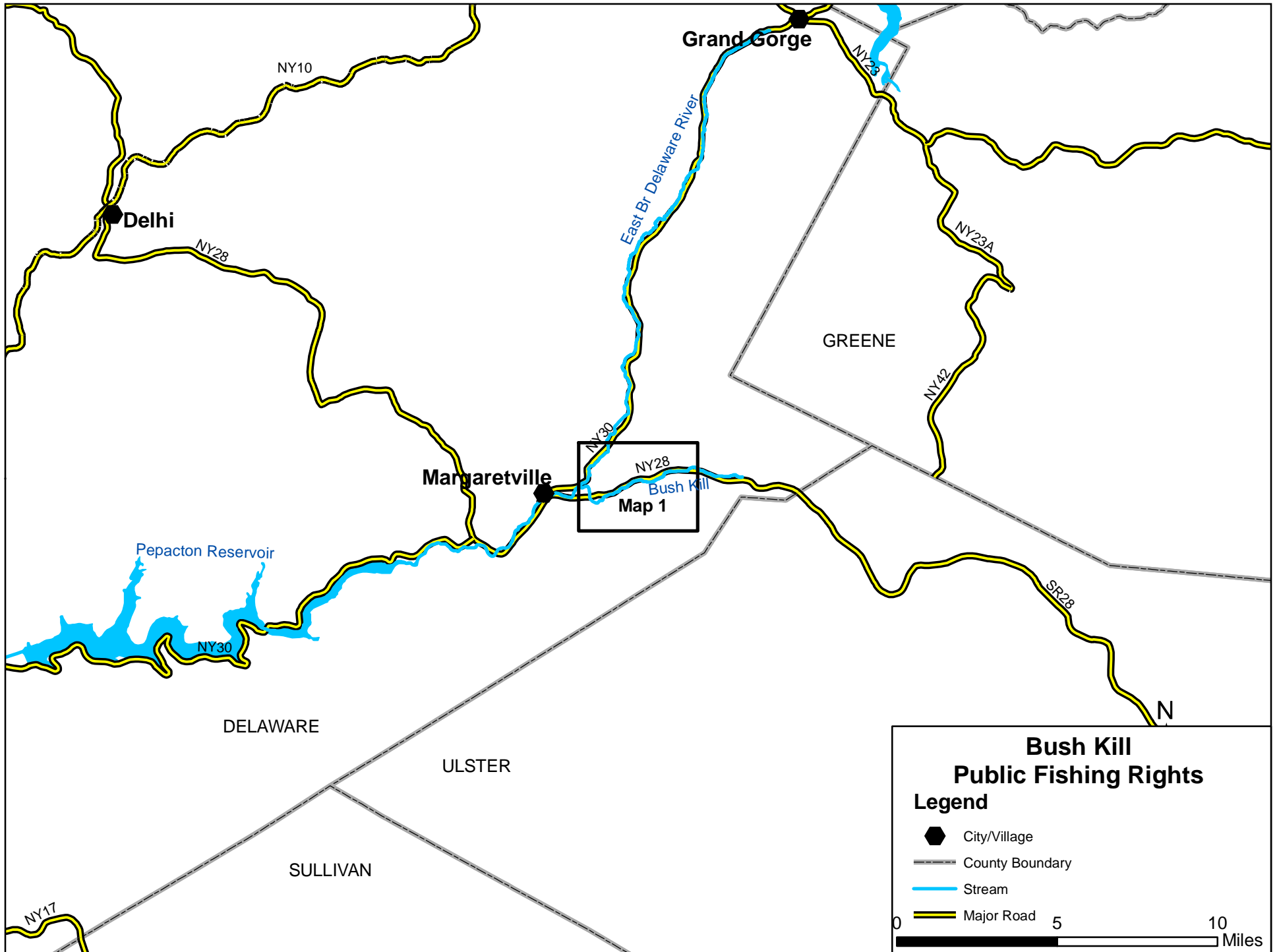
About Public Fishing Rights

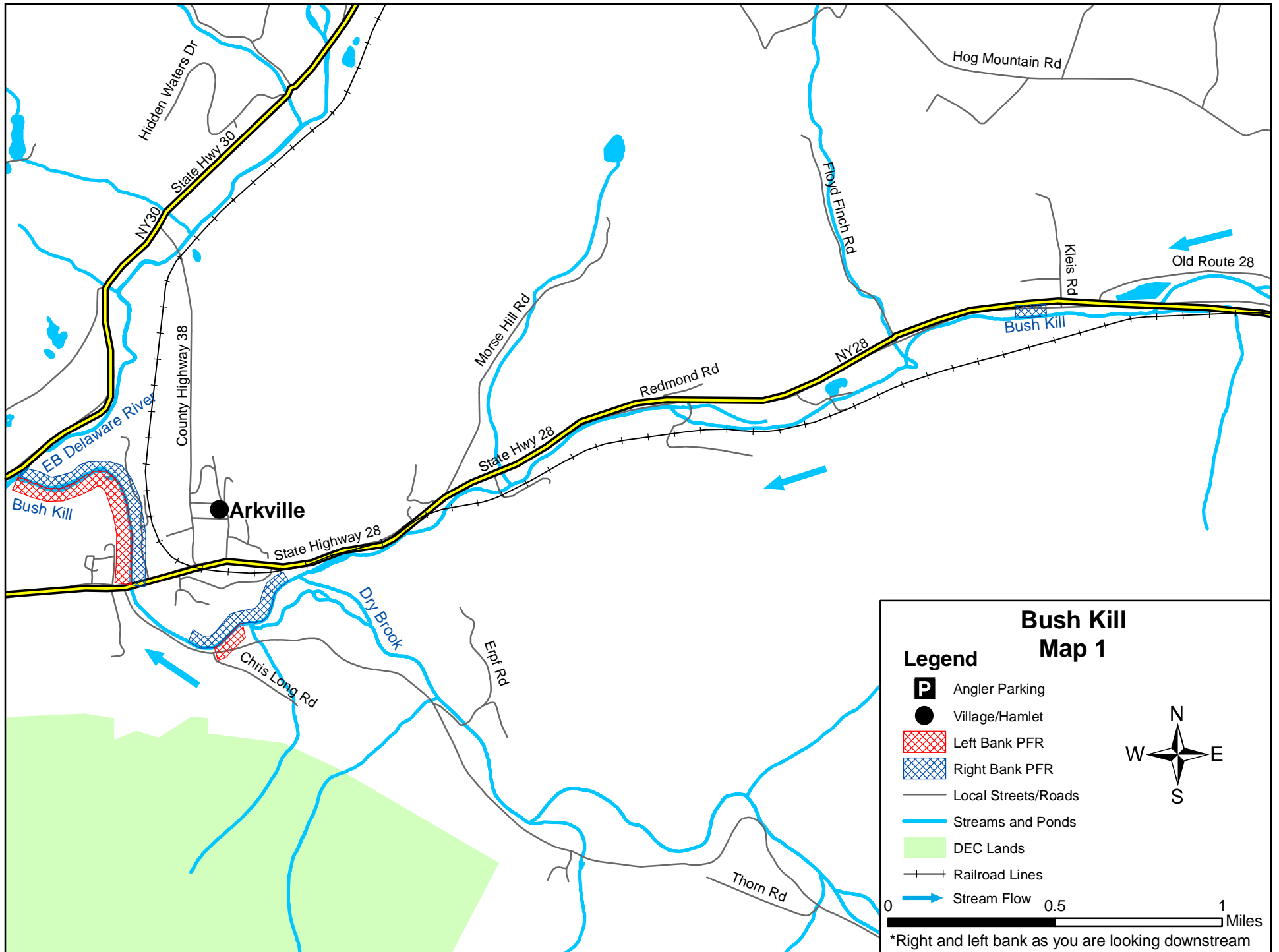
Public Fishing Rights (PFR's) are permanent easements purchased by the NYSDEC from willing landowners, giving anglers the right to fish and walk along the bank (usually a 33' strip on one or both banks of the stream). This right is for the purpose of fishing only and no other purpose. Treat the land with respect to insure the continuation of this right and privilege. Fishing privileges may be available on some other private lands with permission of the land owner. Courtesy toward the land-owner and respect for their property will insure their continued use.

These generalized location maps are intended to aid anglers in finding PFR segments and are not survey quality. Width of displayed PFR may be wider than reality to make it more visible on the maps. Please look for this PFR sign to ensure that you are in the right location and have legal access to the stream bank.



For more information on this creek or if you believe PFR marked areas on these maps are incorrect or missing PFR signs, please call the Region 4 Fisheries office: (607) 652-7366.

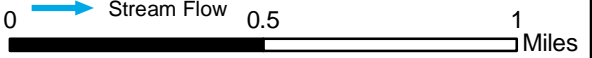




Bush Kill Map 1

Legend

- Angler Parking
- Village/Hamlet
- Left Bank PFR
- Right Bank PFR
- Local Streets/Roads
- Streams and Ponds
- DEC Lands
- Railroad Lines
- Stream Flow



*Right and left bank as you are looking downstream