

Regulations (Color coding matches map below)

- ❑ Oatka Creek EXCEPT the sections described below: Trout all year, any size, Daily limit 5 per person with no more than 2 fish over 12".
- ❑ Oatka Creek from Bowerman Rd upstream 1.4 miles to Union St and Wheatland Center Road upstream 2.5 miles to the mouth of Spring Creek: Trout April 1 – October 15, 12" length limit, 2 per day AND October 16 – March 31, No kill, Artificial Lures ONLY
- ❑ Oatka Creek from Union Street upstream 1.5 miles to Wheatfield Center Road: Trout all year, No kill, Artificial lures ONLY.
- ❑ Spring Creek: Trout April 1 – October 15, 12" length limit, 2 per day AND October 16 – March 31, No kill, Artificial Lures ONLY.
* Areas at NYS Caledonia Hatchery available 8am-4pm ONLY.
- ❑ Tributaries of Oatka and Spring Creeks: Trout April 1 – October 15, any size, Daily limit 5 per person with no more than 2 fish over 12".

Methods for Releasing Fish

1. Use barbless hooks, they are easier to remove.
2. Play a fish no longer than necessary. To do so decreases its chance of survival.
3. Wet your hands before touching a fish that is to be released-dry skin removes the mucous coating on trout. Avoid touching the gills.
4. Use of a landing net increases the survival rate of trout.
5. Gently push the hook out and cradle the fish in your hand, underwater and facing upstream.
6. After a moment, allow the fish to swim free. If the fish turns upside down, catch it and revive it as stated above.

Public Fishing Rights

Public Fishing Rights (PFRs) are permanent easements purchased from landowners, giving anglers the right-of-way to fish and walk along the bank (usually a 33-foot strip on one or both banks of the stream). This right is for the purpose of fishing and no other purpose. Treat the land as if it were your own to ensure the continuation of this right and privilege. Fishing privileges may be available on some private lands. Landowner courtesy and respect for their property will ensure their continued use.

See the other side of this brochure for a detailed map of Public Fishing Rights Areas

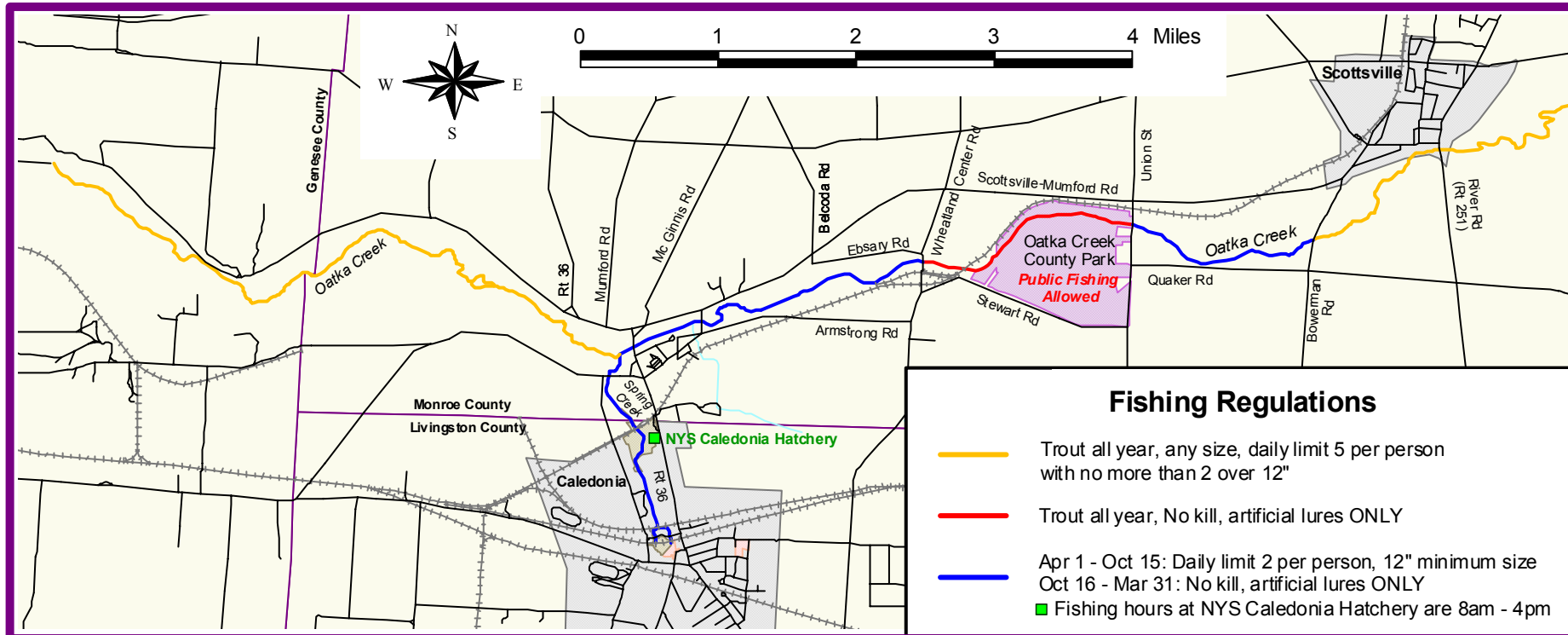
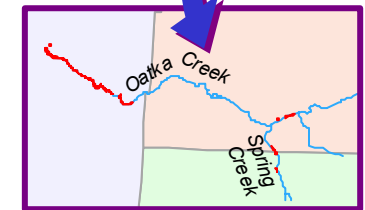
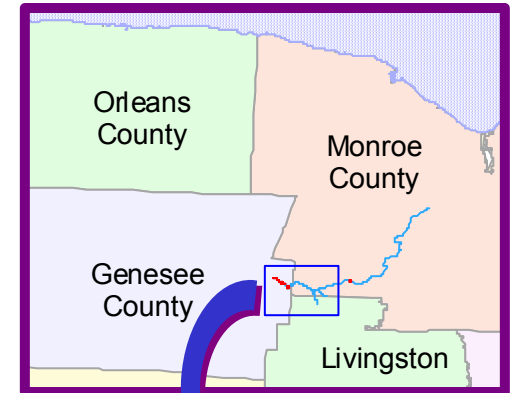


Look for these signs to be sure you are in the right location



Public Fishing Information

Oatka Creek Spring Creek

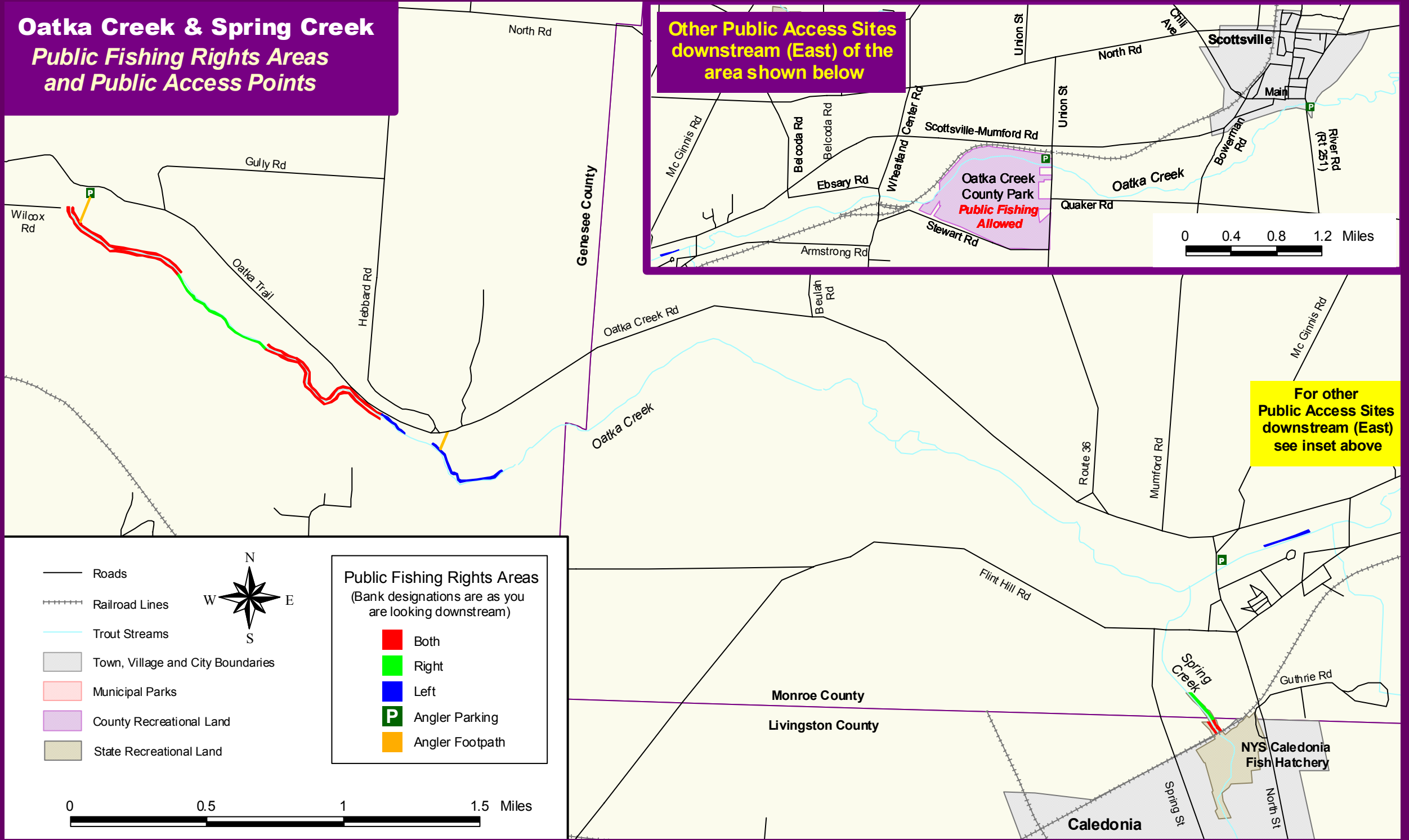


Oatka Creek is a freestone stream located in Monroe and Genesee Counties. Included in its mileage is Oatka Creek County Park, a 1.7 mile section of stream located in the Town of Wheatland. The Oatka is inhabited primarily by brown trout, but don't be surprised if you catch a warm water game fish such as black bass or northern pike.

New York State
Department of Environmental Conservation
www.dec.state.ny.us
George E. Pataki, Governor Erin M. Crotty, Commissioner

Oatka Creek & Spring Creek Public Fishing Rights Areas and Public Access Points

Other Public Access Sites
downstream (East) of the
area shown below



0 0.4 0.8 1.2 Miles

For other
Public Access Sites
downstream (East)
see inset above

— Roads

⋯ Railroad Lines

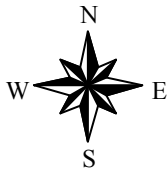
— Trout Streams

▭ Town, Village and City Boundaries

▭ Municipal Parks

▭ County Recreational Land

▭ State Recreational Land



Public Fishing Rights Areas

(Bank designations are as you are looking downstream)

▭ Both

▭ Right

▭ Left

▭ Angler Parking

▭ Angler Footpath

0 0.5 1 1.5 Miles