



New York State Department of

ENVIRONMENTAL CONSERVATION

www.dec.ny.gov

Public Fishing Rights Maps

Elton Creek

Elton Creek at Route 16



Description of Fishery

Originating in the town of Centerville in northwestern Allegany County, Elton Creek flows northwesterly through the Villages of Elton and Delevan before joining Cattaraugus Creek in northeast Cattaraugus County. There are a total of 5.4 miles of public fishing rights easements on this stream.

Elton Creek has a reproducing population of wild brown and rainbow trout. In addition to the wild trout population, over six miles of the creek are stocked annually with 2,700 yearling brown trout and 200 two-year-old brown trout. Elton Creek is stocked from the mouth upstream to Route 16 and from Farmerville Station to Route 98 (not shown on map).

Trout Fishing Regulations

Elton Creek: **Trout; open April 1 - October 15, any size, daily limit 5 per person with no more than 2 longer than 12 inches.**

October 16 - March 31; catch and release only, artificial lures only.

Primary Fish Species

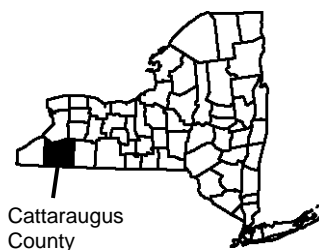
Brown Trout



Rainbow Trout



Location



Cattaraugus County

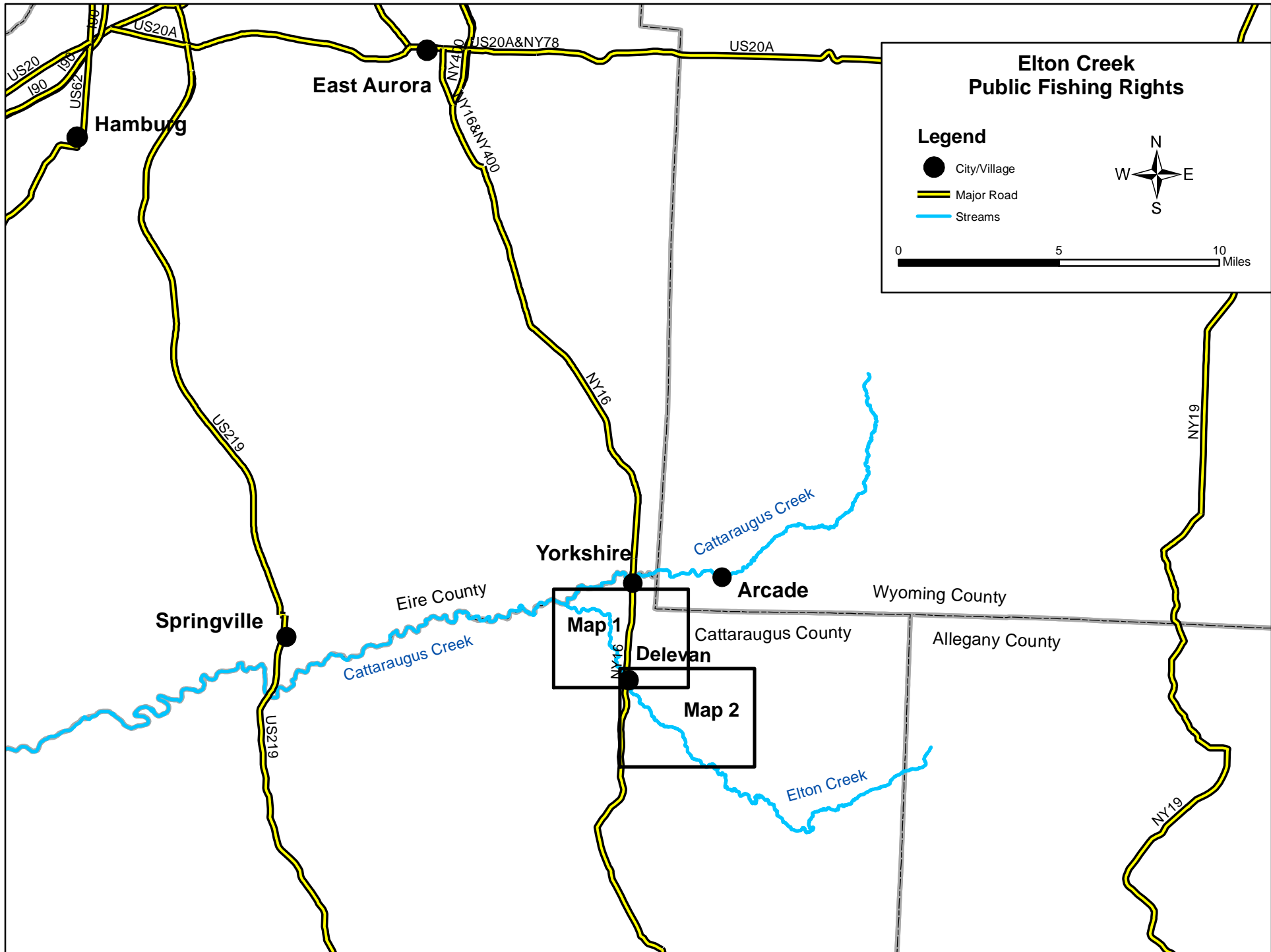
About Public Fishing Rights

Public Fishing Rights (PFR's) are permanent easements purchased by the NYSDEC from willing landowners, giving anglers the right to fish and walk along the bank (usually a 33' strip on one or both banks of the stream). This right is for the purpose of fishing only and no other purpose. Treat the land with respect to insure the continuation of this right and privilege. Fishing privileges may be available on some other private lands with permission of the land owner. Courtesy toward the land-owner and respect for their property will insure their continued use.

These generalized location maps are intended to aid anglers in finding PFR segments and are not survey quality. Width of displayed PFR may be wider than reality to make it more visible on the maps. Please look for this PFR sign to ensure that you are in the right location and have legal access to the stream bank.



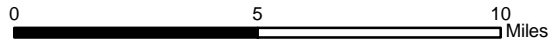
For more information on this creek or if you believe PFR marked areas on these maps are incorrect or missing PFR signs, please call the Region 9 Fisheries office: (716) 372-0645.



Elton Creek Public Fishing Rights

Legend

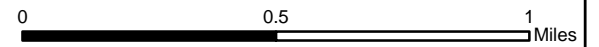
- City/Village
- Major Road
- Streams



Elton Creek Map 1

Legend

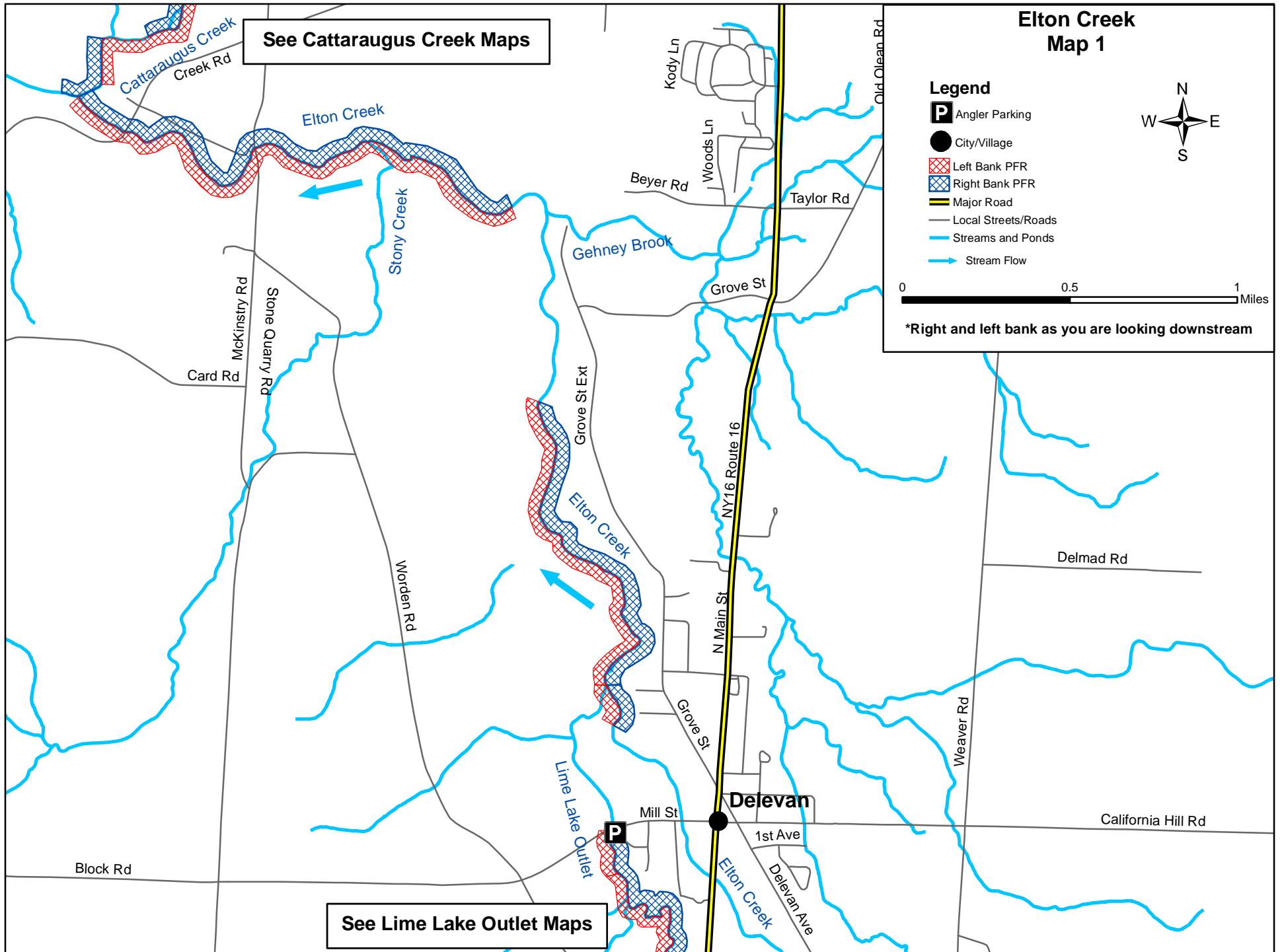
-  Angler Parking
-  City/Village
-  Left Bank PFR
-  Right Bank PFR
-  Major Road
-  Local Streets/Roads
-  Streams and Ponds
-  Stream Flow

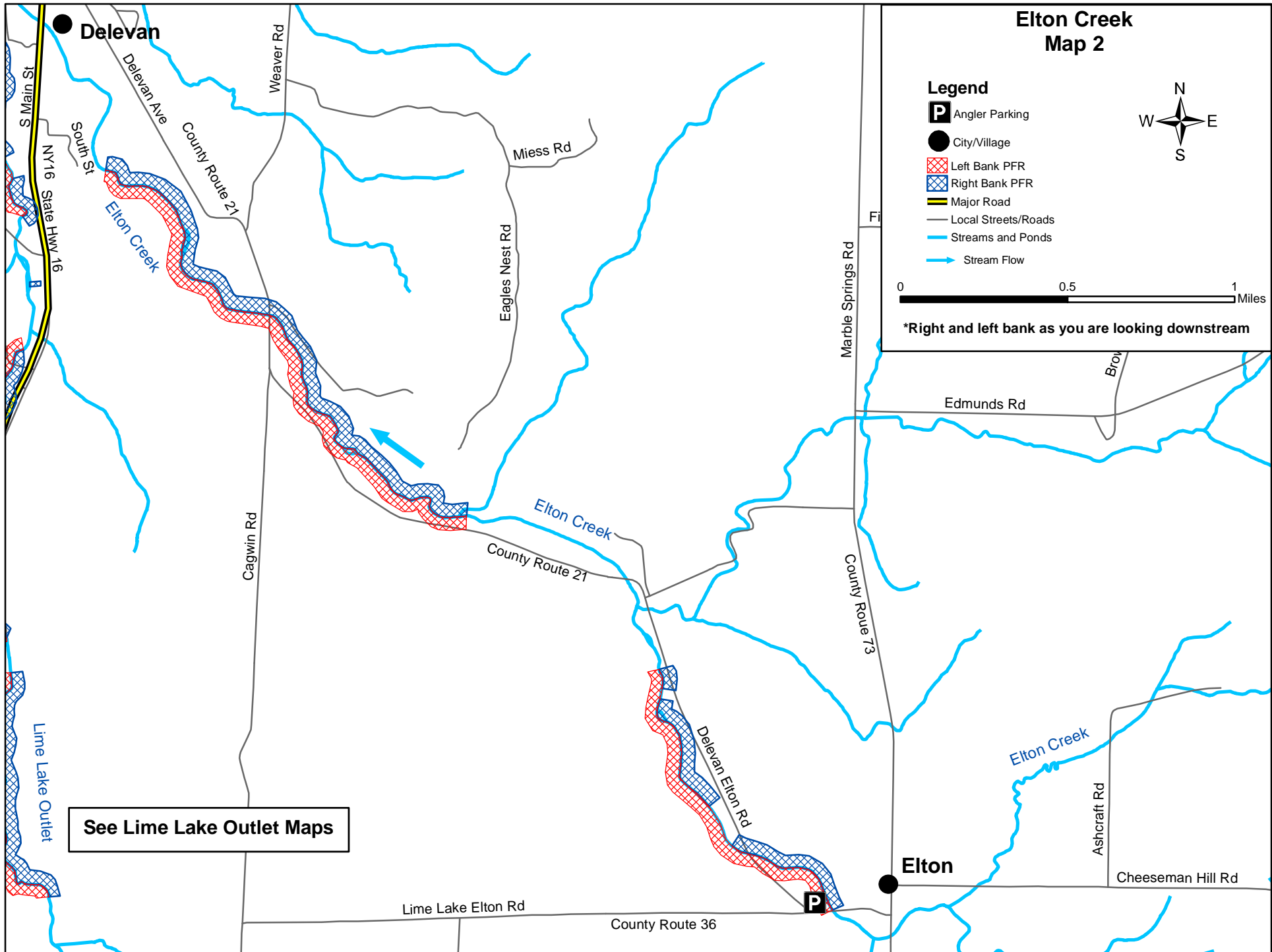


*Right and left bank as you are looking downstream

See Cattaraugus Creek Maps

See Lime Lake Outlet Maps

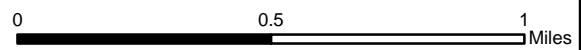




Elton Creek Map 2

Legend

-  Angler Parking
-  City/Village
-  Left Bank PFR
-  Right Bank PFR
-  Major Road
-  Local Streets/Roads
-  Streams and Ponds
-  Stream Flow



***Right and left bank as you are looking downstream**

See Lime Lake Outlet Maps