



New York State Department of

ENVIRONMENTAL CONSERVATION

www.dec.ny.gov

Public Fishing Rights Maps

Cattaraugus Creek, Hosmer & Spring Brooks



Description of Fishery

Cattaraugus Creek originates at Java Lake in southwestern Wyoming County and flows westerly, becoming the border between Cattaraugus and Erie Counties. There are 13.1 miles of public fishing rights easements on this stream. Each spring, more than 18 miles of Cattaraugus Creek (from East Arcade downstream to the Town Line Road Bridge) are stocked with 12,200 yearling brown trout and 1,950 two-year-old brown trout. In addition, the stream has healthy populations of wild brown and rainbow trout, with recent DEC surveys estimating their combined numbers at 630 adult trout per stream mile.

Though not stocked, Hosmer Brook has plenty to offer the angler, containing an estimated 700 wild brown and rainbow trout per mile. Spring Brook, a small Cattaraugus Creek tributary in Wyoming County also has wild brown and rainbow trout, as well as some wild brook trout. Hosmer Brook has 1.6 miles of public fishing rights easements and Spring Brook has 0.8 miles.

Trout Fishing Regulations

Cattaraugus Creek & Spring Brook: **Trout; open April 1 - October 15, any size, daily limit 5 per person with no more than 2 longer than 12 inches.**

Hosmer Brook: **Trout; open April 1 - October 15, 9 inch minimum size, daily limit of 5 per person with no more than 2 longer than 12 inches.**

Cattaraugus Creek & Hosmer Brook: **Trout; October 16 - March 31, catch and release only, artificial lures only.**

Primary Fish Species

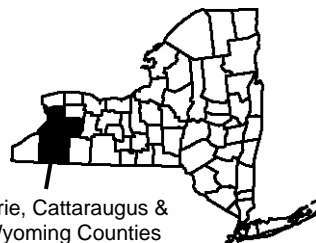
Brown Trout



Rainbow Trout



Location



Erie, Cattaraugus & Wyoming Counties

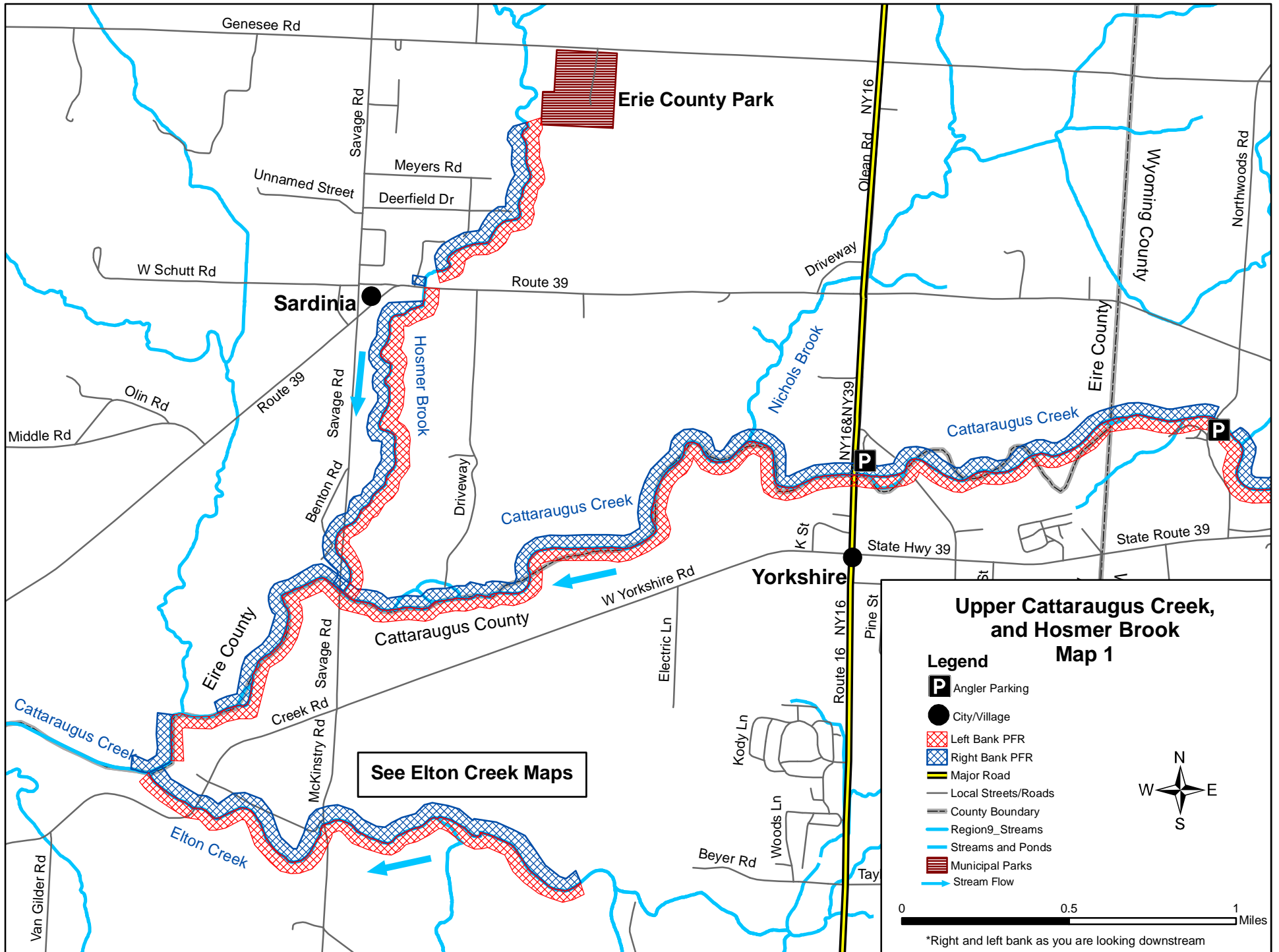
About Public Fishing Rights

Public Fishing Rights (PFR's) are permanent easements purchased by the NYSDEC from willing landowners, giving anglers the right to fish and walk along the bank (usually a 33' strip on one or both banks of the stream). This right is for the purpose of fishing only and no other purpose. Treat the land with respect to insure the continuation of this right and privilege. Fishing privileges may be available on some other private lands with permission of the land owner. Courtesy toward the land-owner and respect for their property will insure their continued use.

These generalized location maps are intended to aid anglers in finding PFR segments and are not survey quality. Width of displayed PFR may be wider than reality to make it more visible on the maps. Please look for this PFR sign to ensure that you are in the right location and have legal access to the stream bank.



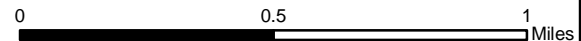
For more information on this creek or if you believe PFR marked areas on these maps are incorrect or missing PFR signs, please call the Region 9 Fisheries office: (716) 372-0645.



Upper Cattaraugus Creek, and Hosmer Brook Map 1

Legend

- P** Angler Parking
- City/Village
- ▨ Left Bank PFR
- ▨ Right Bank PFR
- ▬ Major Road
- ▬ Local Streets/Roads
- ▬ County Boundary
- ▬ Region9_Streams
- ▬ Streams and Ponds
- ▨ Municipal Parks
- ▬ Stream Flow

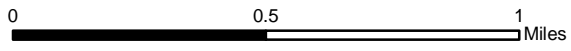


*Right and left bank as you are looking downstream

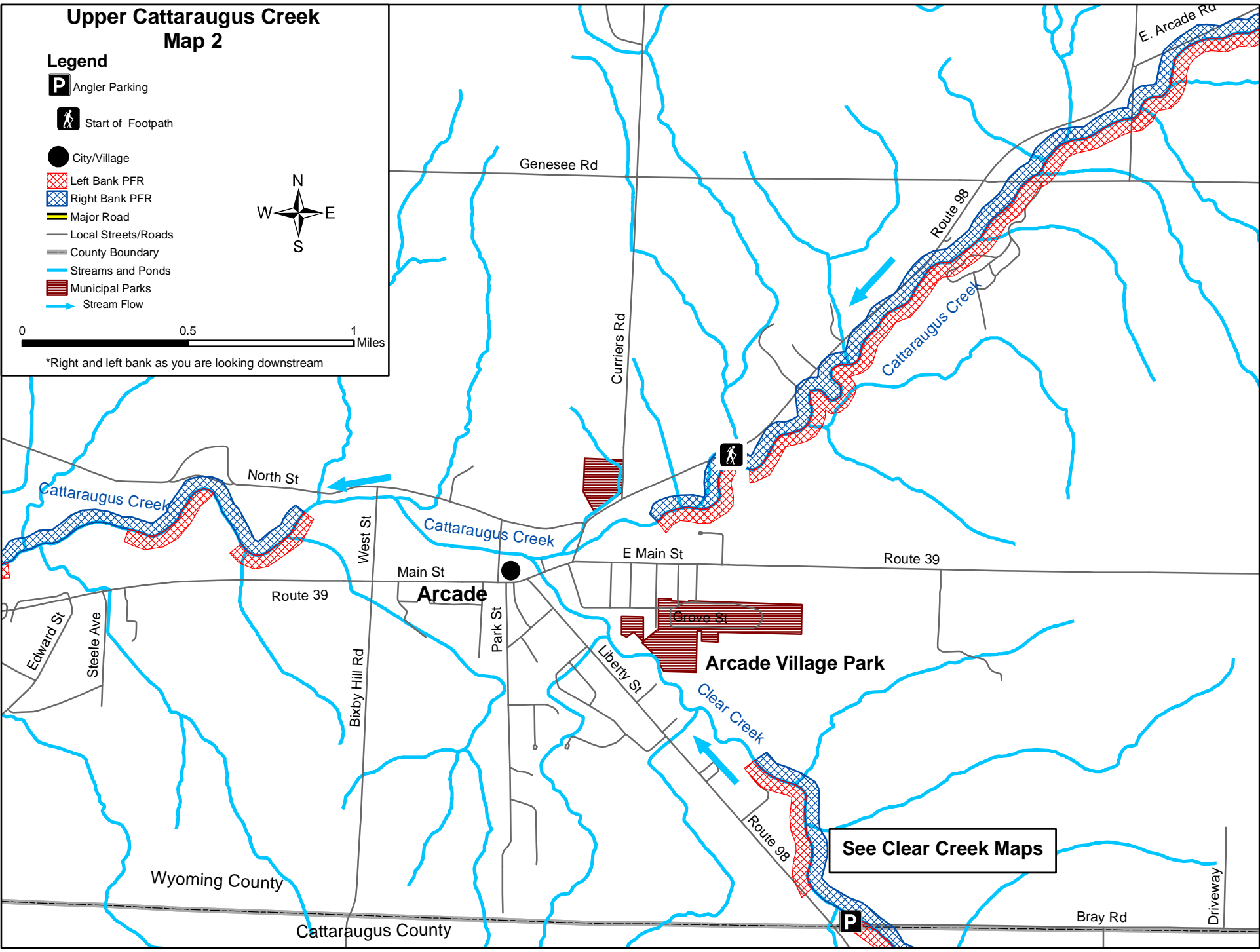
Upper Cattaraugus Creek Map 2

Legend

-  Angler Parking
-  Start of Footpath
-  City/Village
-  Left Bank PFR
-  Right Bank PFR
-  Major Road
-  Local Streets/Roads
-  County Boundary
-  Streams and Ponds
-  Municipal Parks
-  Stream Flow



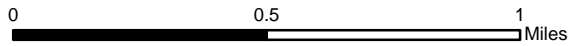
*Right and left bank as you are looking downstream



Upper Cattaraugus Creek and Spring Brook Map 3

Legend

- Angler Parking
- Start of Footpath
- Angler Footpath
- City/Village
- Left Bank PFR
- Right Bank PFR
- Local Streets/Roads
- Streams and Ponds
- Stream Flow



*Right and left bank as you are looking downstream

