

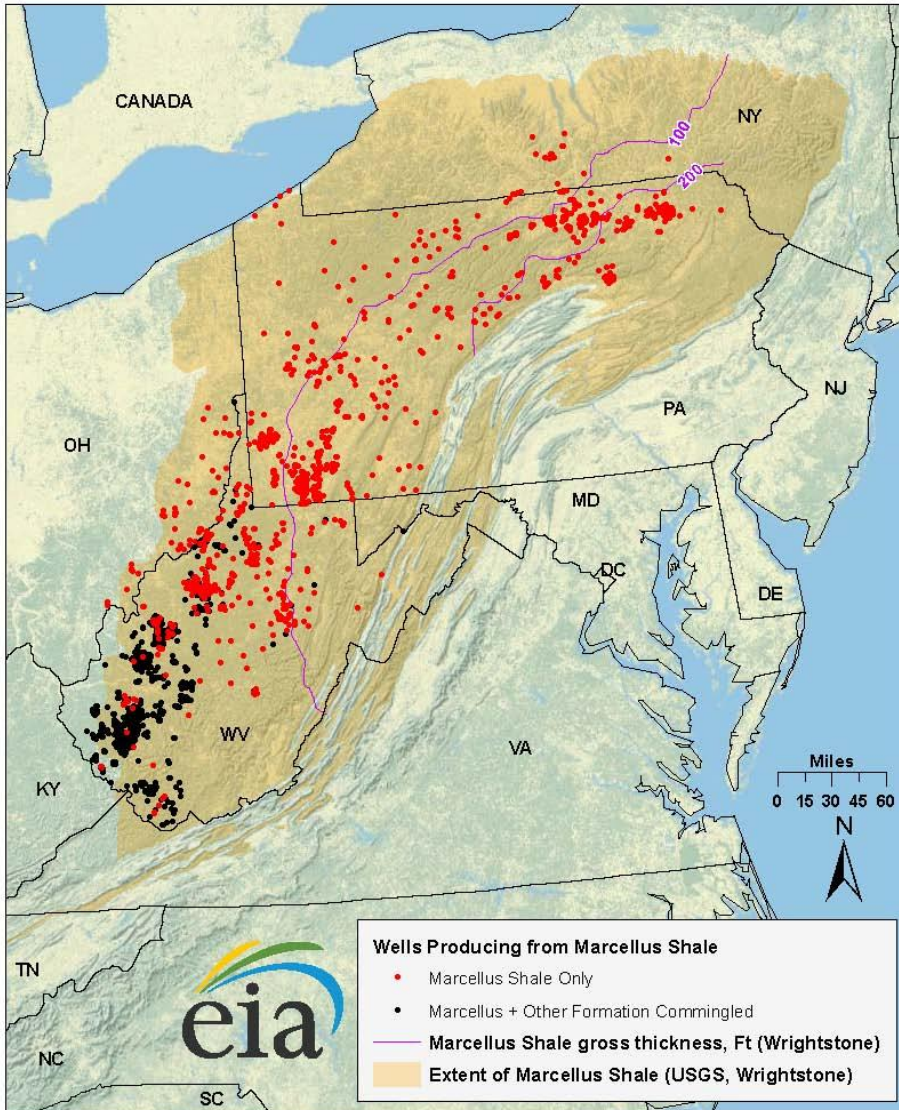
# **2011 Supplemental Generic Environmental Impact Statement for High-Volume Hydraulic Fracturing**

**Commissioner Joe Martens  
NYS Department of Environmental Conservation**

**July 1, 2011**



## Marcellus Shale Gas Play, Appalachian Basin

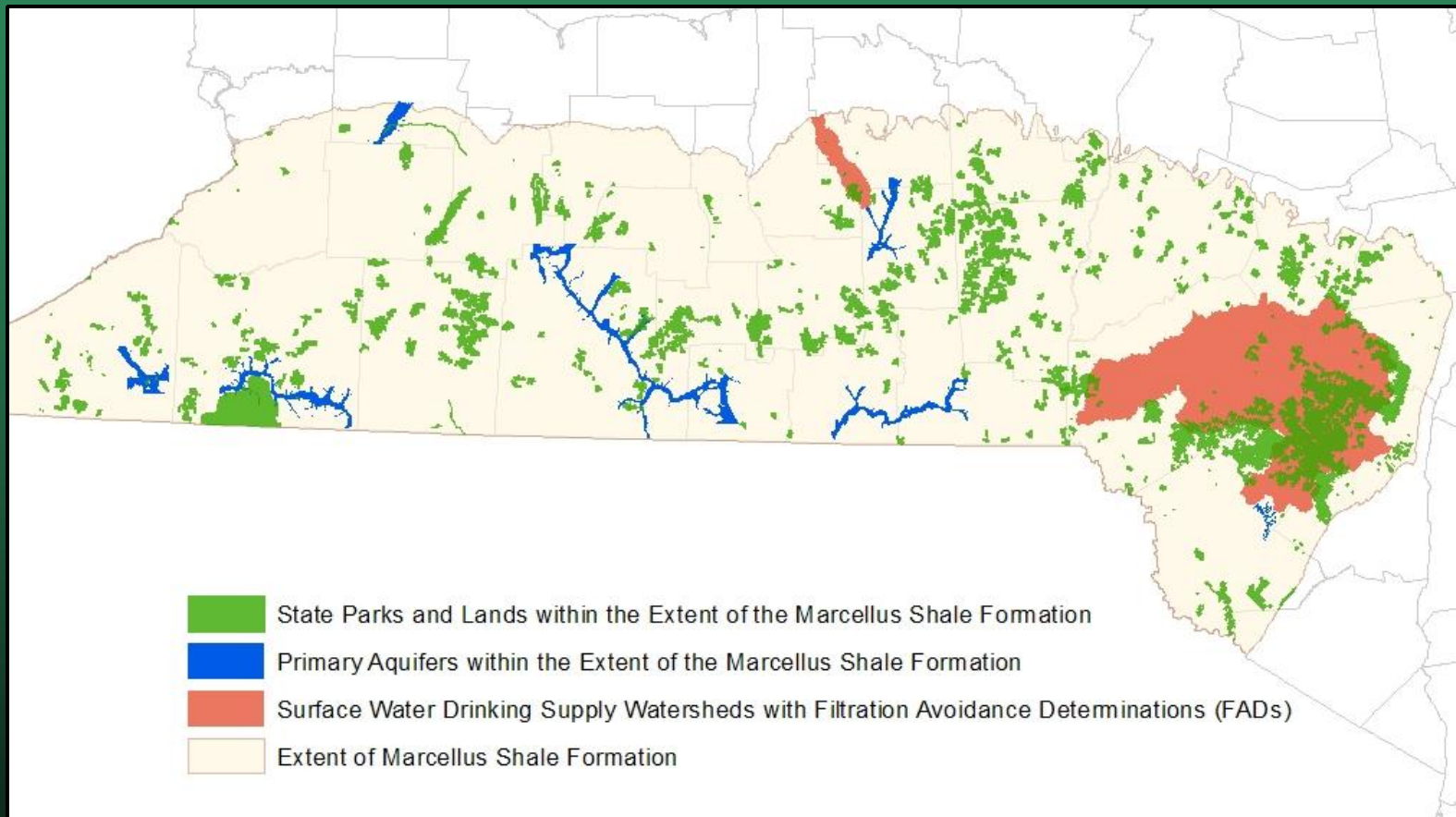


Source: US Energy Information Administration based on data from WVGES, PA DCNR, OH DGS, NY DEC, VADMME, USGS, Wrightstone (2009). Only wells completed after 1-1-2003 are shown. Updated June 1, 2011

# Marcellus Shale

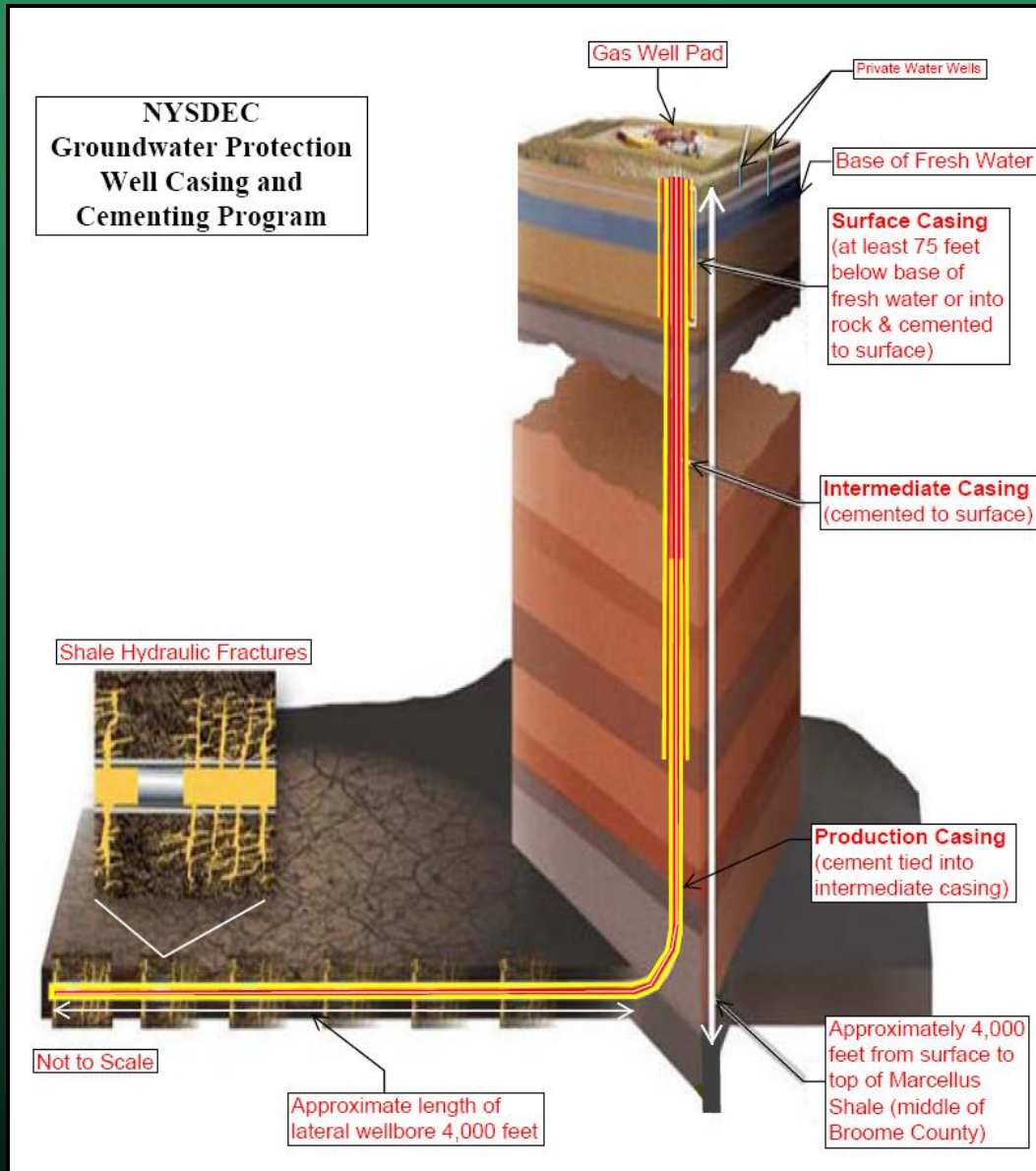


# Prohibited in NYC & Syracuse Watersheds, Primary Aquifers and State Lands



# Protecting Drinking Water:

## Intermediate Well Casing



# Protecting Drinking Water: Containment Measures



# Protecting Drinking Water



# Protecting Drinking Water: Flowback Water Measures



# Protecting the Air



# Mitigating Community & Local Government Impacts



# Advisory Panel

## Initial Members:

- **Stan Lundine**, former NYS Lieutenant Governor
- **Kathleen McGinty**, Former Chair of White House Council on Environmental Quality under President Clinton
- **Eric A. Goldstein and Kate Sinding**, Senior Attorneys, Natural Resources Defense Council
- **Robert Hallman**, Board Chair, NY League of Conservation Voters
- **Robert F. Kennedy Jr.**, President of the Waterkeeper Alliance
- **Robert Moore**, Executive Director, Environmental Advocates
- **Mark Brownstein**, Chief Counsel, Energy Program, Environmental Defense Fund
- **Heather Briccetti**, Acting President & CEO of the Business Council of New York State, Inc.
- **Robert B. Catell**, Chairman of the Advanced Energy Research and Technology Center at SUNY Stony Brook
- **Mark K. Boling**, Executive Vice President, General Counsel and Secretary, Southwestern Energy
- **Senator Tom Libous**, Deputy Majority Leader
- **Assemblymember Donna Lupardo**



# Next Steps in the Process

- Complete socioeconomic & community impact research
- Release updated SGEIS and 60-day public comment period begins
- DEC review of public comments begins



# Questions

