



The Rogers Center Journal

Rogers Environmental Education Center



New York State Department of Environmental Conservation
Division of Public Affairs and Education
In conjunction with the not-for-profit
Friends of Rogers Environmental Education Center, Inc.

See Schedule of Events Inside!

Summer 2009 - FINAL

www.dec.ny.gov (Search for Rogers)

June - July - August

Rogers Environmental Education Center

2721 State Highway 80
Sherburne, NY 13460-4507
607-674-4017; press 1 for Education
FAX: 607-674-2655
E-mail: rogers@gw.dec.state.ny.us

Staff

Marsha Guzewich, Director - Ext 624
Fred von Mechow, Program Coord. - Ext 625
Laura Carey, Project WILD Coord. - Ext 626
Chris DeCesare, Educator - Ext 627
Amy Kochem, Water Ed. Specialist - Ext 628
Darlene Miller, Office Manager - Ext 623

Visitor Center and Bookstore Hours

Monday - Friday
8:30 AM to 4:45 PM
Saturday 1:00 to 4:45 PM
Sunday (June-August only)
1:00 - 4:45 PM
Closed State Holidays

Grounds Open Daily Sunrise to Sunset

Friends of Rogers Board of Directors

Laurie Trotta, President
John Novak, Vice President
Rose Cole, Treasurer
Carol Smith, Secretary
Randy Muth
Frank Lee
Thurston Packer
Byron Harrington
Howard "Woody" Woodard

Friends of Rogers Store

Friends of Rogers operates a bookstore in the Visitor Center. Come in and look through the many field guides and natural history books for all ages - **all at 20 percent off retail prices!**
We can also special order hard-to-find nature titles!

The Rogers Center Journal
is produced by Darlene Miller
and published quarterly.

If you wish to subscribe,
Please contact Rogers Center - Ext 623.

**Printed on recycled paper.
Please recycle this copy.**

Notes from the Director

By Marsha Guzewich

And so another season rolls along. This is the time when people are more inclined to get outdoors to enjoy areas that are easily in reach of them. There are trails to hike, clean rivers and streams to paddle and beautiful spots to enjoy. Most often it costs nothing or very little to enjoy the wonders of nature. At the very least a comfortable pair of shoes can get you out. Bikes, kayaks or canoes do involve an investment of money, but there are ways to obtain good equipment second hand at a reasonable price.

This is a busy time for the center staff with visits from schools, visits to schools, programs for public and adult groups and participation in conservation oriented activities such as the Envirothon contest. At the Regional Envirothon, teams of students answer questions in the areas of aquatic ecology, forestry, soils, wildlife, a topic of current interest and make a presentation on a particular problem. The top team from each county in a region then goes on to compete at the state level. State winners continue on to the national level. Rogers has hosted this event in the past as part of the rotation to each county of the region for two years in succession. Our Region Envirothon was held at Baltimore Woods Nature Center in Marcellus this year.

Good attendance at the programs offered here at Rogers is the norm and we are observing the usual demand for programs for youth or adult groups. Call on us to provide a free educational program for a group with which you are involved. As the world changes toward more advanced technology, there is nothing like experiencing nature first hand. We take people on those experiences from Rogers. It could be catching frogs when they start calling in the spring, it might be hiking in our local state lands to find a patch of lady's slippers or it might be a short hike to learn about seasonal activities of the area's inhabitants. Put "coming to a Rogers program" on your summer "to do" list.



Friends of Rogers Update

By Laurie Trotta

We just celebrated Earth Fest on a beautiful May 2. Various "green" exhibitors demonstrated and shared information with attendees, and kids and families participated in many activities designed for fun learning. Volunteers help make this day run smoothly, carrying out many essential jobs (see article on Earth Fest volunteers). Due to financial limitations, we've scaled back a bit, but we'd love to hear your thoughts about what activities would make your day more enjoyable, especially if you know of another exhibitor or appropriate entertainer we might invite.

New York State Department of Environmental Conservation
David A. Paterson, Governor Pete Grannis, Commissioner

"Kids in Nature Daily"
The quarterly newsletter with
fun and stimulating activities
that teach about nature.

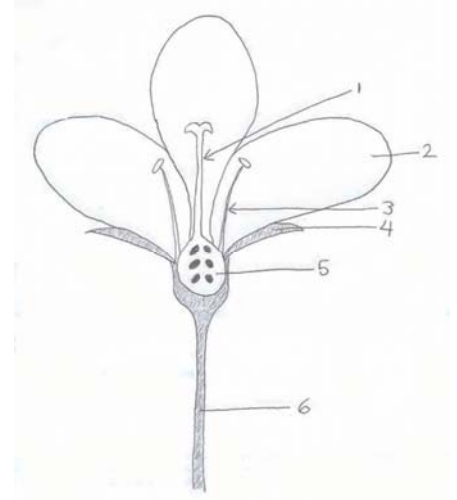


Be K.I.N.D. to your world!
Summer 2009
Issue #44
By naturalist interns
Christina Schubert and Lindsay Fisk

Nature Quiz: Flower Parts

Match the parts of a flower! Look at the picture and write the number of the flower part next to its name and description below. (*Answers to flower parts quiz: see page 4*)

- ___ **Ovary:** Makes the new seeds. This is the part that turns into a fruit in some plants.
- ___ **Petal:** Many petals surround the pistil and stamens and attract pollinators to the flower. Petals are big and brightly colored in many showy flowers.
- ___ **Pistil:** The "female" part of the plant. It usually stands above the stamens and collects pollen. The pollen travels down the pistil to the ovary, where it fertilizes the seeds.
- ___ **Sepal:** Sepals surround and protect the flower when it is growing as a bud. They are outside of the petals and are usually green, but sometimes they are brightly colored and are mistaken for petals.
- ___ **Stamen:** The "male" part of the plant. There are usually several of these in a ring around the pistil. They produce pollen.
- ___ **Stem:** Holds up the flower and helps it grow towards the light.

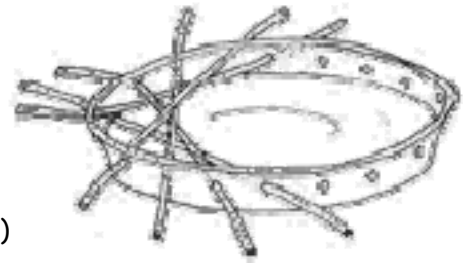


Craft Corner

Bird Drinking Fountain

What You'll Need:

- ✓ 6-inch clear plastic flowerpot saucer
- ✓ 10-inch clear plastic flowerpot saucer
- ✓ hole punch
- ✓ 8 thin straight branches (12 inches long, 1/8 inch diameter, flat ends)
- ✓ awl or large nail
- ✓ 6 feet of heavy twine or lightweight rope
- ✓ Scissors



What To Do:

1. Punch 16 holes around the rim of the 10 inch saucer. Begin by punching two holes directly across from one another; then punch two others midway between the first two holes, etc.
2. Now you will weave the thin branches around the saucer. From the outside, poke one end of a branch into any hole. Pull the tip of the branch across the inside of the saucer and out of the fourth hole in either direction. Adjust the branch so the same length sticks out from each side.
3. Continue placing branches in one hole and out the fourth hole away from it.
4. Cut three, 2-foot long pieces of twine. Tie them with double knots to three holes spaced evenly around the rim.
5. Gather the three ends of the ropes together and tie them in one knot. Be sure that the drinking fountain hangs straight
6. Fill the 6-inch saucer with water and place it in the center of the 10-inch saucer. Hang the fountain from a sturdy tree branch in your yard, preferably where it gets sun at one point and shade at another point during the day. Change water from time to time, and have fun watching the birds who visit.

A Year in the Life of Vernal Pools

By Marsha Guzewich

Do you enjoy wandering in the woods? You could be lucky enough to discover a vernal pool. These woodland water bodies are temporary wetlands. Typically water from snow melt or rain collects in a depression, having no inlet, no outlet and no connection with another water body. The water usually dries out in the summer. We now understand that these pools have an essential role in the life cycle of some salamanders, fairy shrimp and some frogs. Because fish cannot survive here there are fewer predators on the larval forms. It turns out that for the mole salamander (a family of salamanders with the habit of burrowing into the soil), including spotted, Jefferson, marbled and Blue spotted, this habitat is essential to complete their life cycle. Humans have unintentionally impacted these pools through development and by filling them in. Roads built through woodland areas can wreak havoc on the adult salamanders because when the adult salamanders travel to the vernal pool where they were born on the first warm rainy night after winter they can get run over by cars using the road. In some areas, concerned citizens go out on these nights and stop traffic so the salamanders can safely cross the road to their home pool. If you do not make it out into the woods on the first warm rainy night in March or April you can still see the pools during the daylight and figure out which kinds of salamanders and frogs have laid their eggs there. Travel the woods in the spring armed with a small net and pan so that you can dip into the water and look at what is living there. The classification of a vernal pool is determined by finding the presence of indicator species. There are some species which need this fish free environment to complete their life cycle and others which use the pool because it is available. Once you have located a vernal pool, start a log book and keep track of what you find over the months. Because the salamanders return to the pool where they were born, this is a log book which may go on for many years. In our area the Upper Susquehanna Coalition is mapping these pools to better understand where they are located. To share information on vernal pools that you know about visit the website: www.u-s-c.org/ephemeralpools

Exploring a vernal pool at Stony Pond (photo by Dr. Scott M. Sutton)



Exciting Sightings

By Fred von Mechow

The most exciting sighting this winter/spring was bear scat and tracks at our Adams Farm property a mile west of our visitor center site. Laura discovered it with a group of enthused teachers who were participating in our Winter Ecology Teacher Institute in February.

Staff have noticed mink on several occasions meandering around the visitor center and our recently retired maintenance person, Tony, spotted two coyotes along one trail.

We have a muskrat lodge in the Cunningham Ice Pond for the first time any staff can remember (there used to be many in the Channels Marsh).

If you've been to the Adams Farm lately, you probably noticed the beaver evidence. They have dammed the small stream leading out of the ponds and flooded the former field area and also dammed the small channel between the gravel road and the Chenango River. There are a few spots where you can see where they've chewed trees down, but surprisingly not many. They must be somewhat discreet about where they cut trees and shrubs.

Bald Eagle sightings continue to rise. It seems we get a report about once per week from viewers along the Chenango River between Greene and Sherburne. Eagles have fished Rogers Center several times this spring and provided some good early morning looks for staff arriving to work. After reaching a low of ZERO successful nesting pairs in the late 1970s, New York State has recovered to where we now have about 120 successful nesting pairs.



Special Programs!

Rogers Center invites you to explore the trails with a naturalist at 1:30 PM most Saturdays. Come explore the Center grounds. Witness seasonal changes as we enter the dog days of summer. Take a walk with Rogers Center staff and find your connection with the natural world and to Rogers Center.

Walks will occur throughout the summer most Saturdays at 1:30 PM. Please call for more information. Families and individuals welcome. Meet at Rogers Visitor Center. Dress appropriately for the weather. Free.

See insert for summer program schedule.

Donations

Friends of Rogers wishes to thank the following individuals and organizations for their generous contributions in the form of much-needed items, services and money:

Individual and Group Donors:

Earth Fest: Procter & Gamble
OHM BOCES
Anonymous – fishing equipment & supplies



A BIG “Thank You” to Facilitators!

A huge “thank you” to Project WET and Project WILD teacher workshop facilitators who are committed to protecting our natural resources. They enable other educators to incorporate even more environmental education into their teaching and are an essential part of the program’s success:

Dara Dorsey	Patricia Perone
Beth Nichols	Sharon Kennelty-Cohen
Pete Angie	Jane Murakowski
John Lancos	Leah Sarasohn
Tanner Snell	Joana Chan
Gail Tooker	Kimie Romeo
Mort Stein	MaryAnna Russo
Monika Wood	Megan Dye
Nancy Coddington	

ATTENTION READERS – THIS WILL BE THE LAST PRINTED ISSUE OF THE JOURNAL — Read Us Online

ATTENTION READERS - This is the final issue of the printed Rogers Center Journal. As we make an effort to reduce mailing costs and conserve resources, we are discontinuing printing the Journal. Instead, we are offering an online newsletter by expanding our web pages to include regular updates of news and notes from Rogers Center. Our web pages already include up-to-date program descriptions. To receive regular e-mail notifications of upcoming programs and invitations to visit the web pages when news is updated, please sign up at <http://lists.dec.state.ny.us/mailman/listinfo/rogerscenterjournal> and follow the easy instructions. Paper copies of our program descriptions will be available for pick up at the Visitor Center at Rogers Center. Back issues of the Rogers Center Journal, including this issue, are in PDF format at www.dec.ny.gov/education/1841.html for you to read or download and print.

Flower parts quiz answers:

1-pistil, 2-petal, 3-stamen, 4-sepal, 5-ovary, 6-stem

