

RGGI Modeling Update

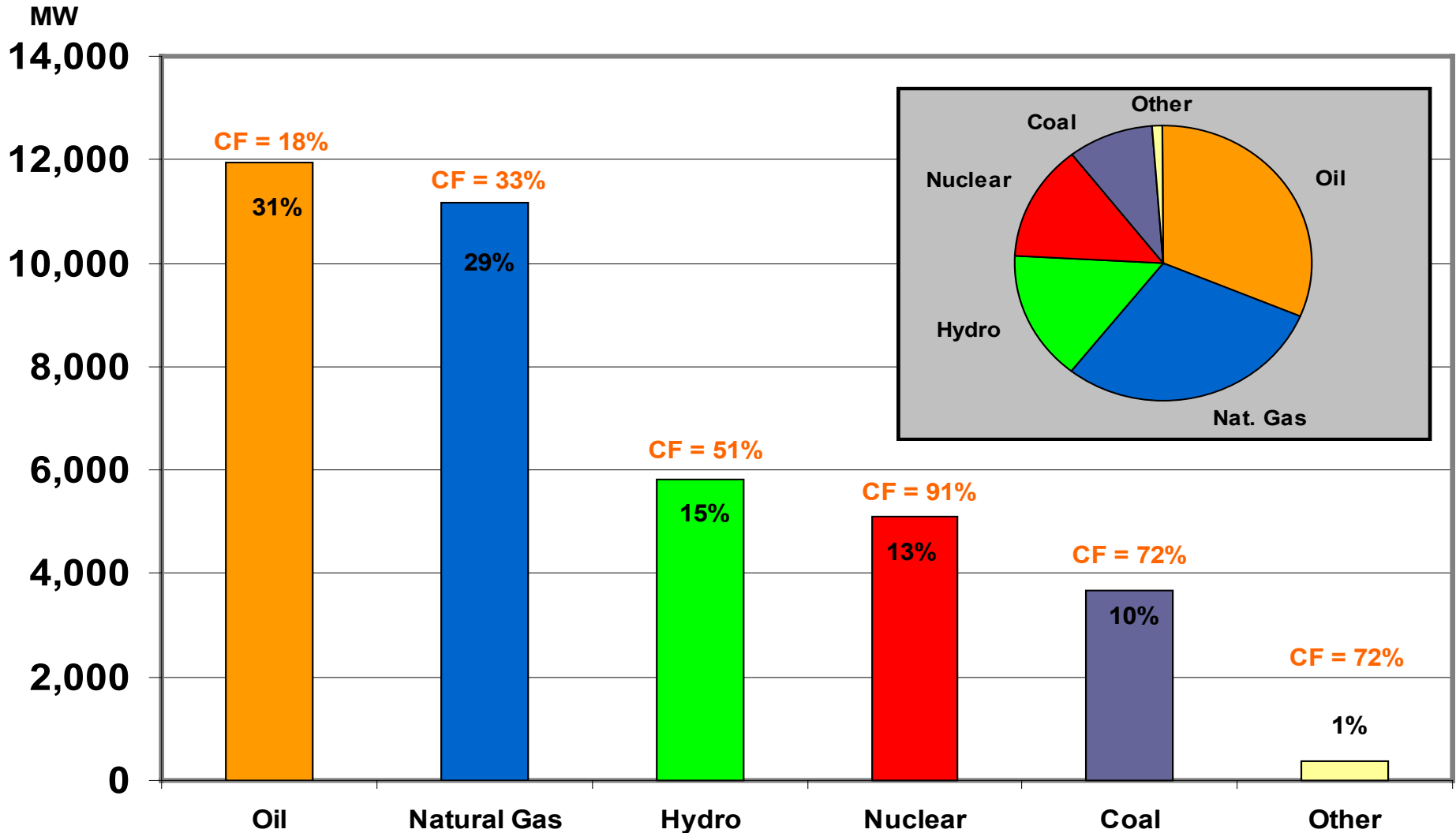
New York Results

Karl Michael

New York State Energy Research & Development
Authority

February 2, 2005

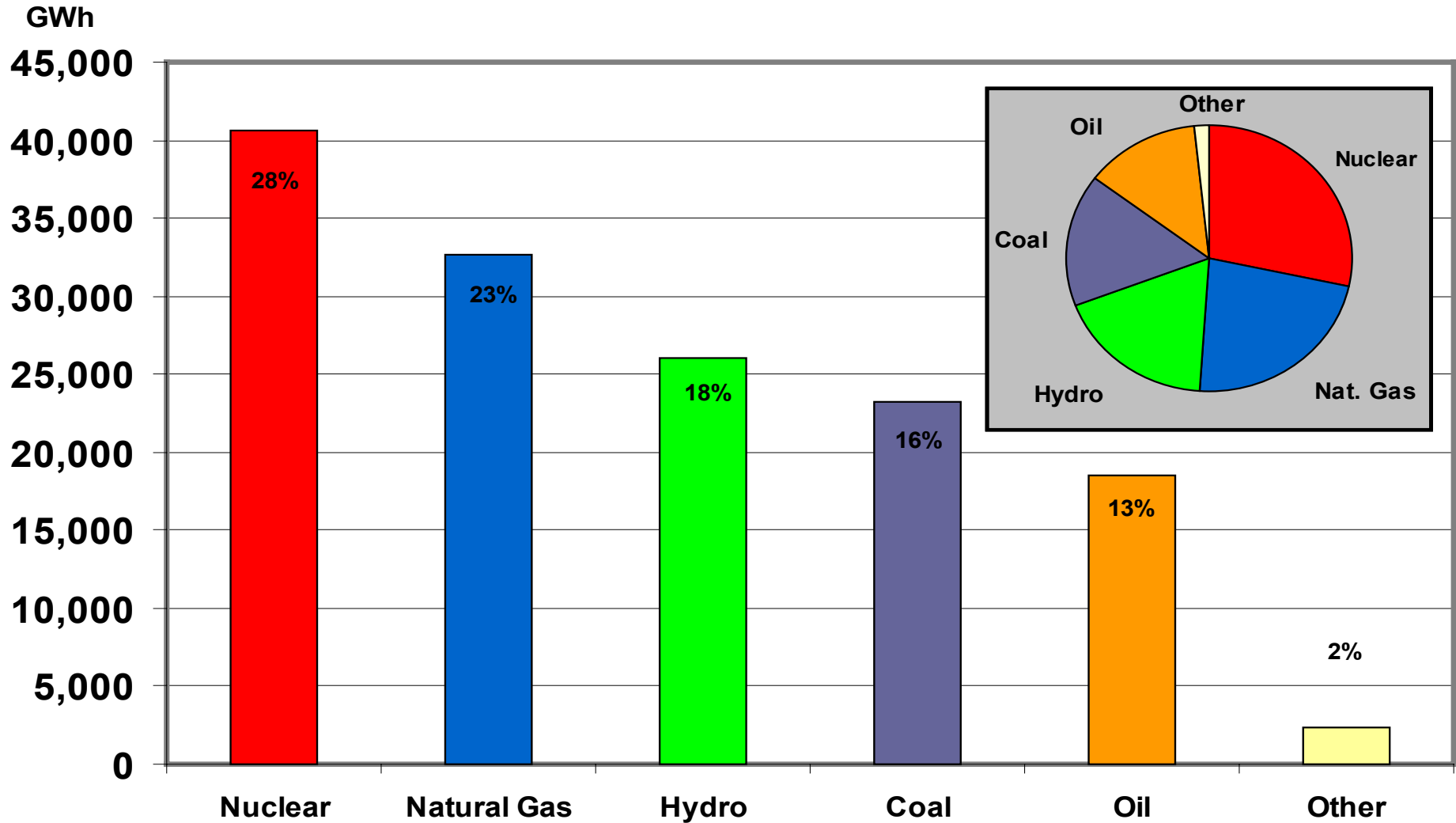
New York State Summer Generation Capacity as of January 1, 2004 (State Total = 38,121 MW)



Note: Units are classified by their primary fuel, as listed in the NYISO "2004 Load and Capacity Data" report.

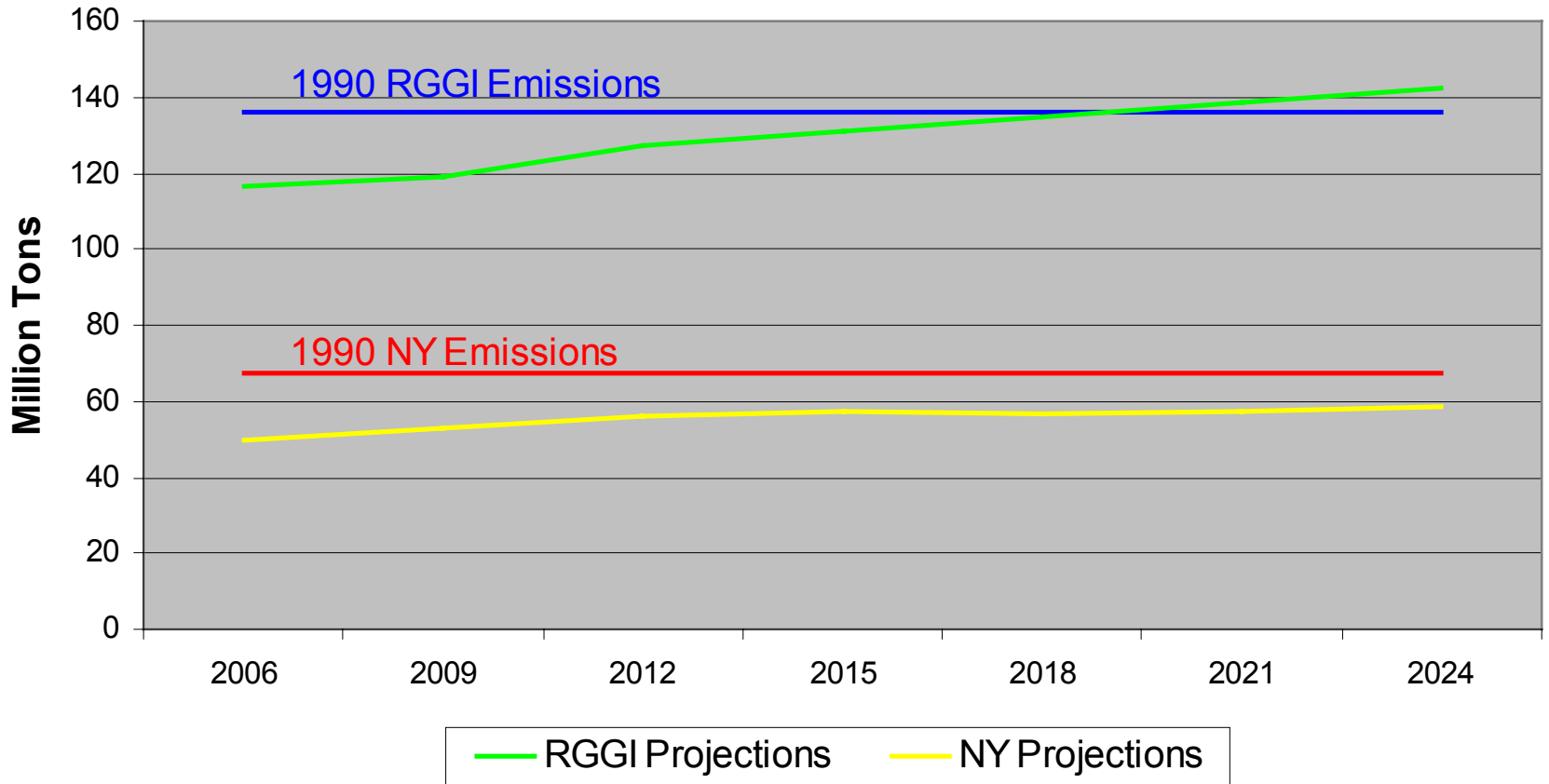
New York State 2003 Generation by Fuel Type

(Statewide Total = 143,461 GWh)

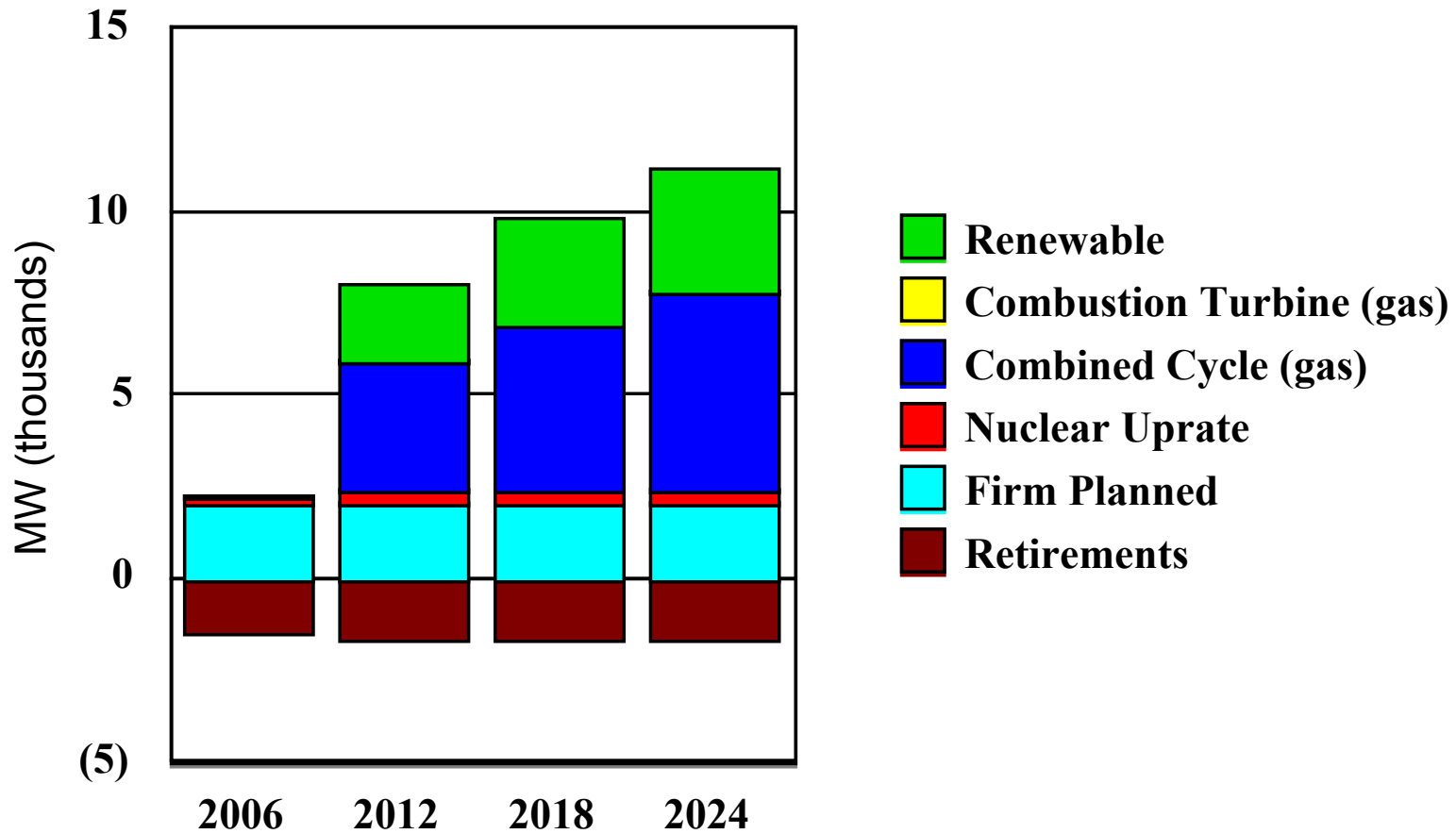


Note: Data is from the NYISO "2004 Load and Capacity Data" report. Figures assume units burn their primary fuel exclusively.

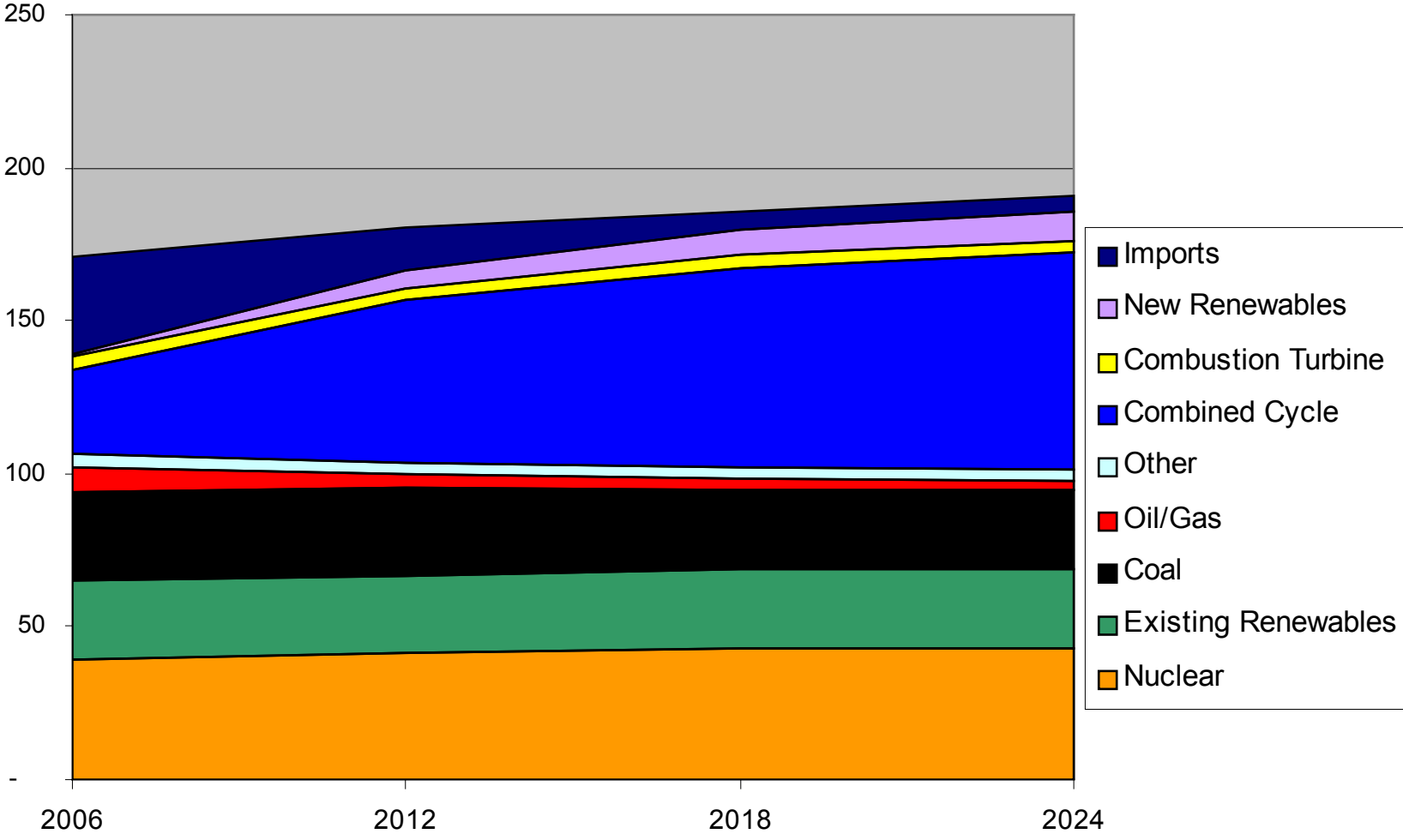
New York and Total RGGI CO2 Emissions



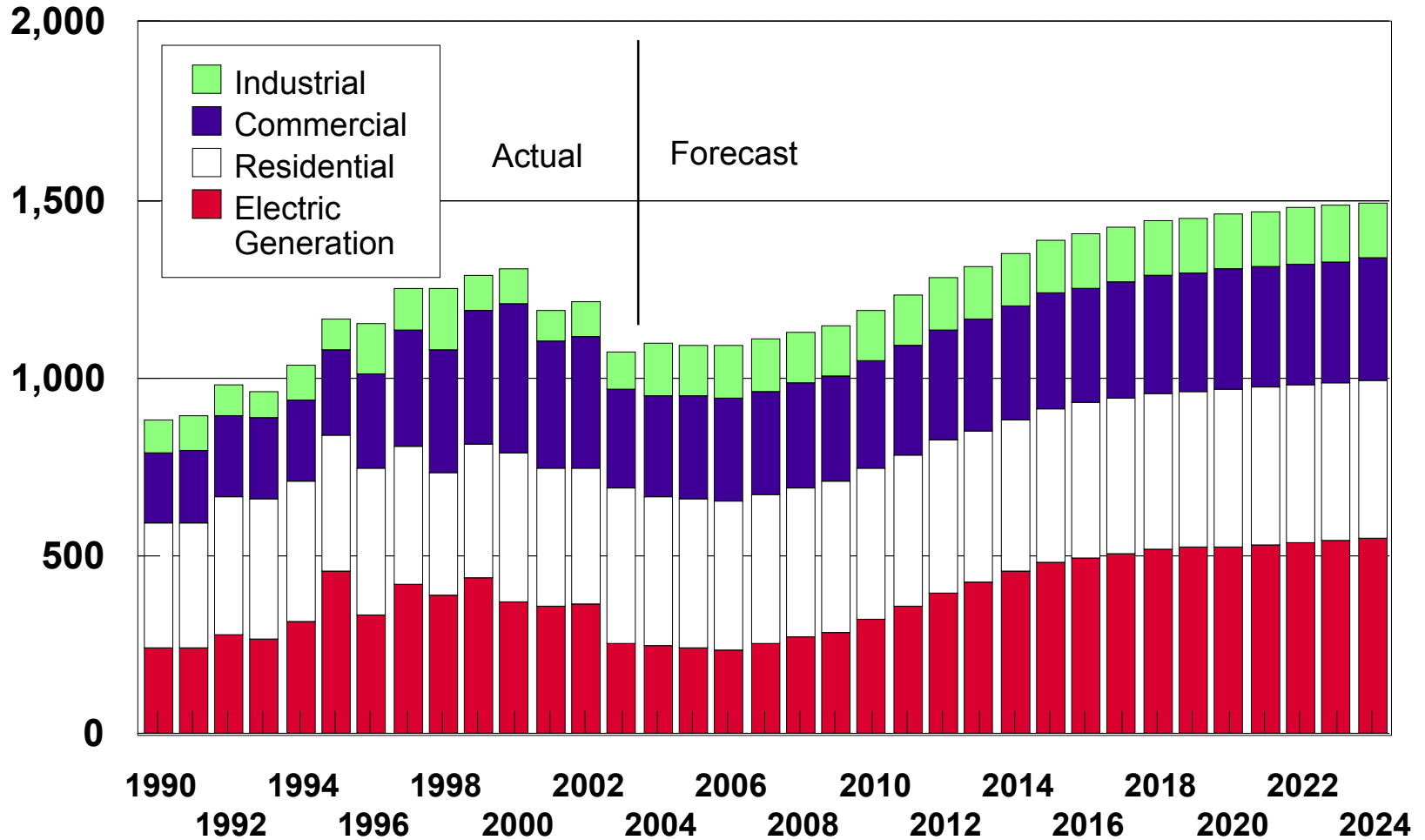
New York--Capacity Additions/Retirements



New York Generation Mix (GWh)

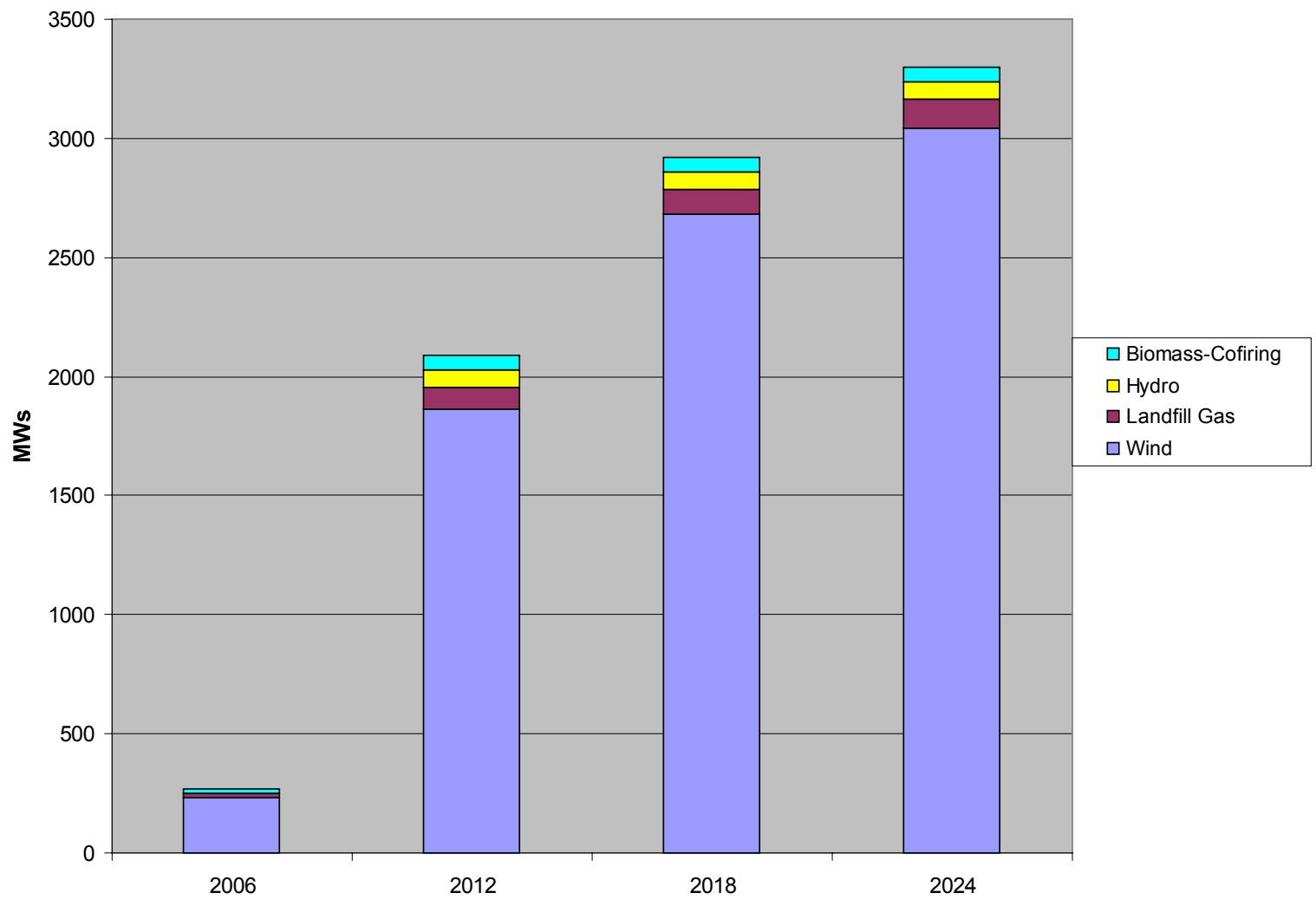


NYS Natural Gas Consumption by Sector (TBtu)



Data Source: Actual "Pattern & Trends", Forecast "RGGI Reference Case" and "State Energy Plan - 2002."

New Renewable Capacity -- New York (MWs)



New Renewable Generation Mix -- New York

