

---

# **RGGI MODELING UPDATE**

---

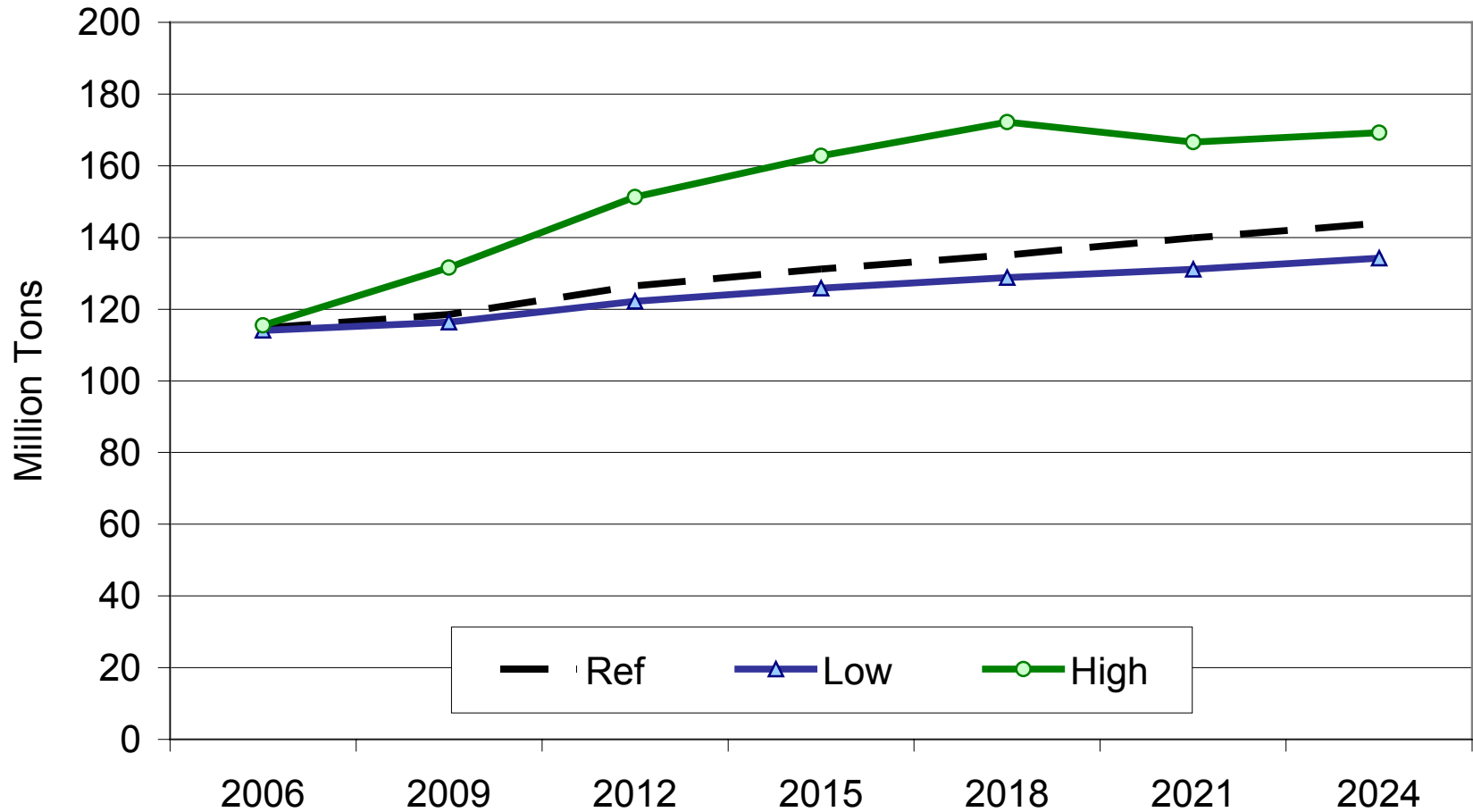
**New York Stakeholders Meeting**

**May 3, 2005**

Karl Michael

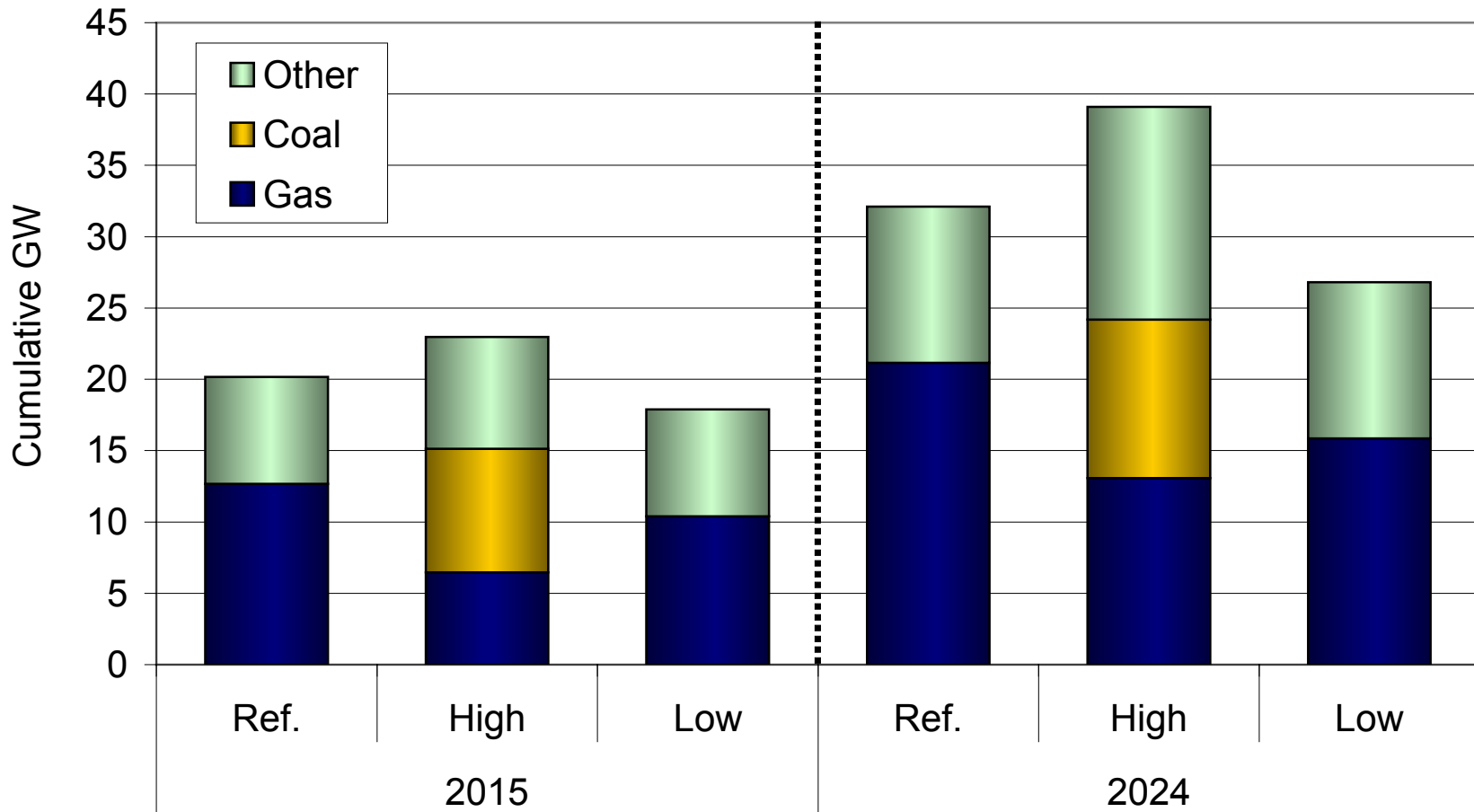
NYSERDA

# CO<sub>2</sub> Emissions Across Alternate Reference Cases

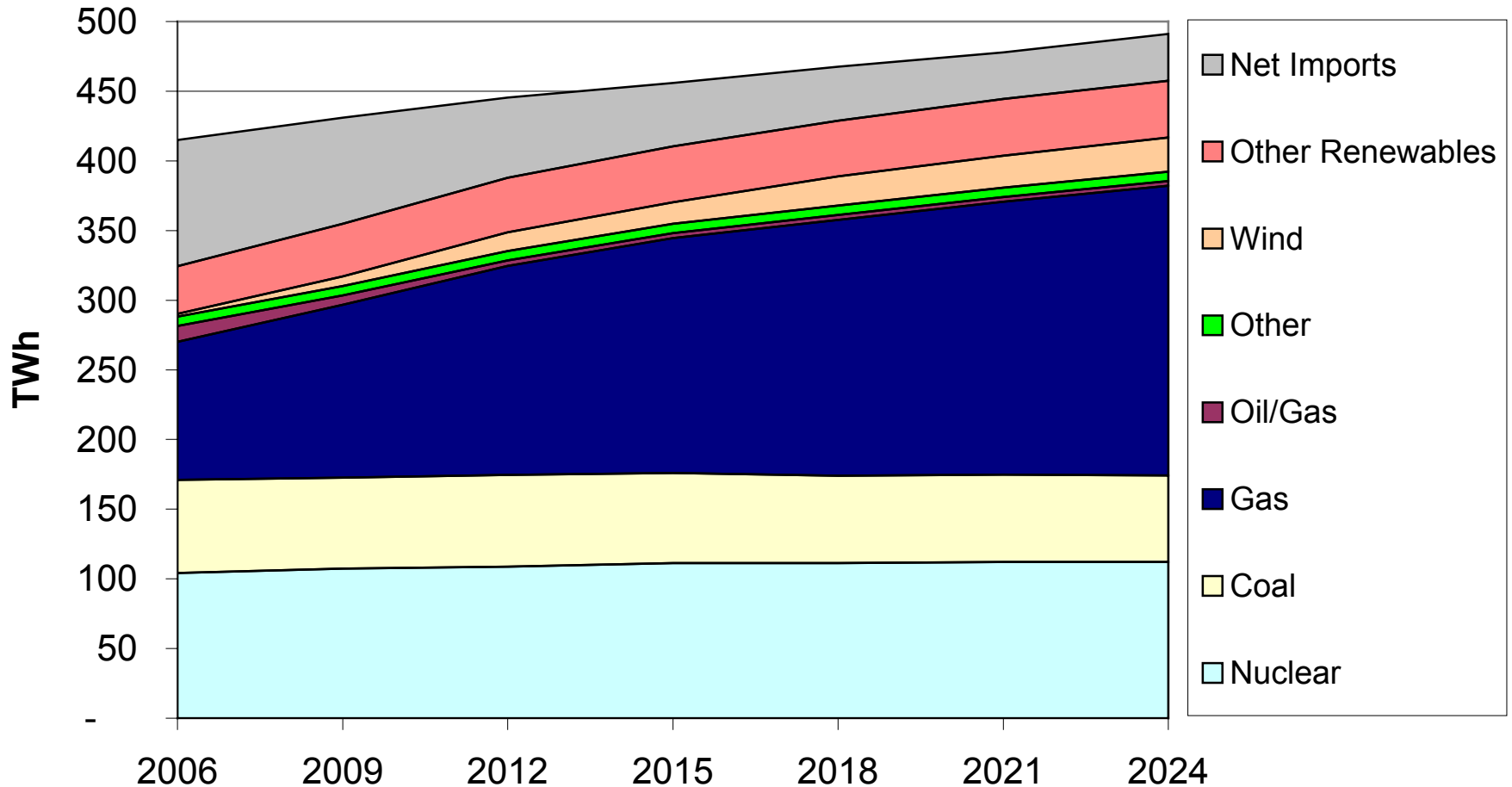


# RGGI Build Mix Across Reference Cases

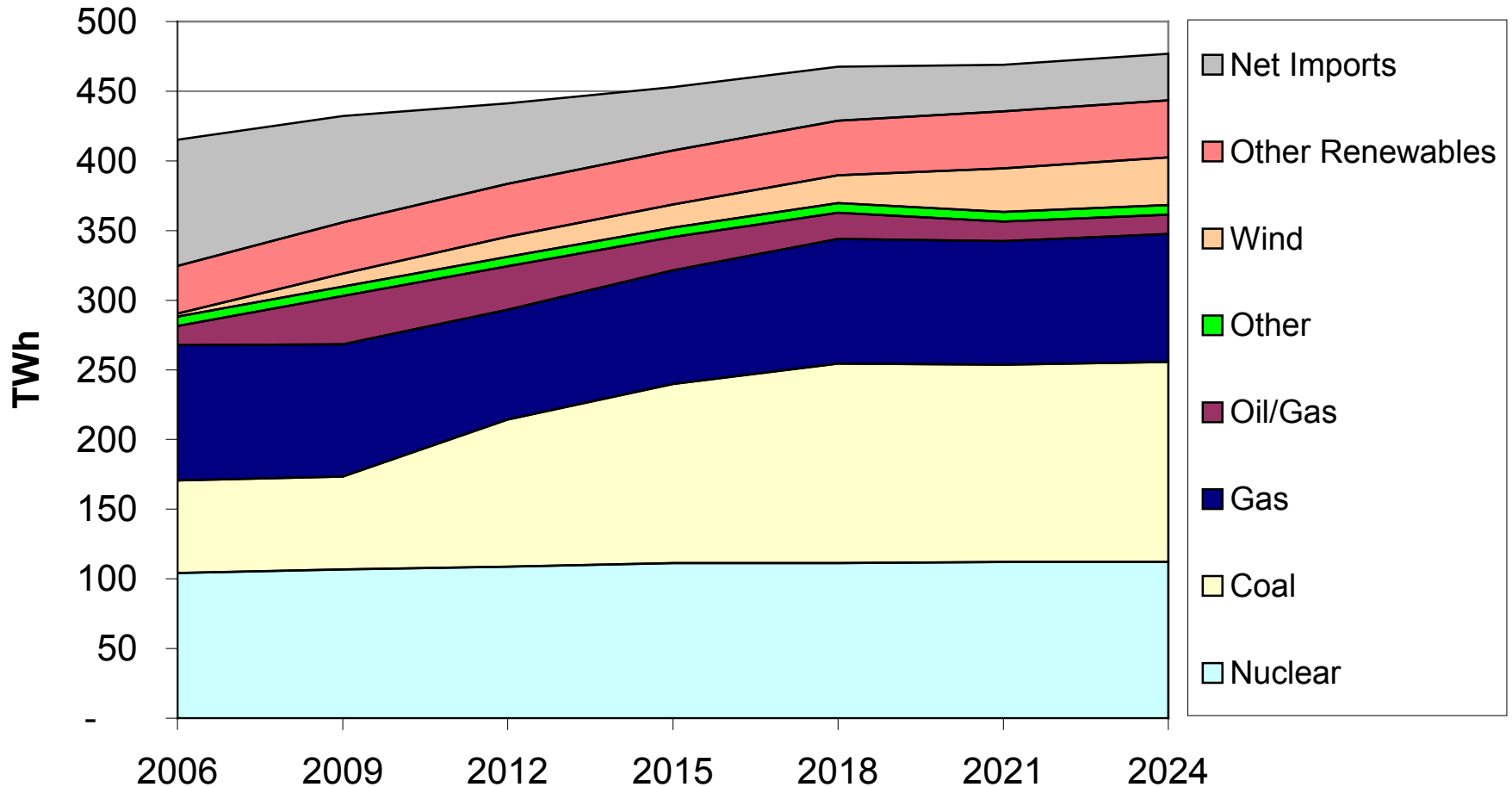
## *Cumulative through 2015 and 2024*



# Reference Case - Regional Generation Mix



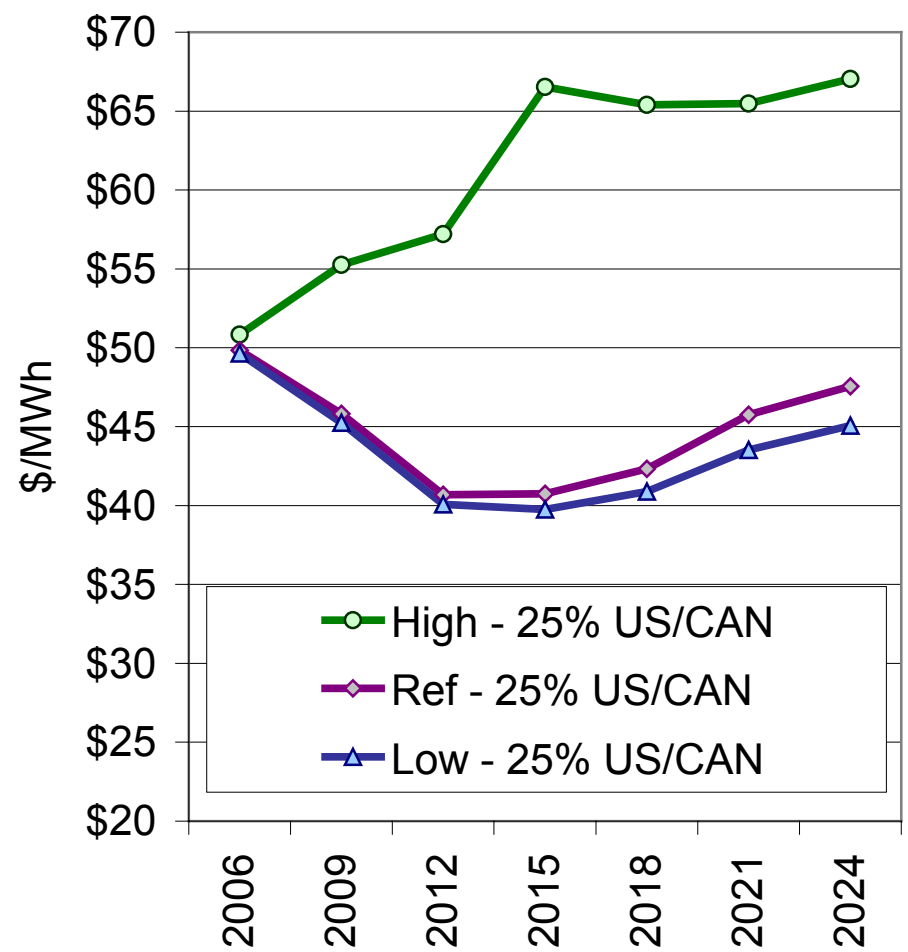
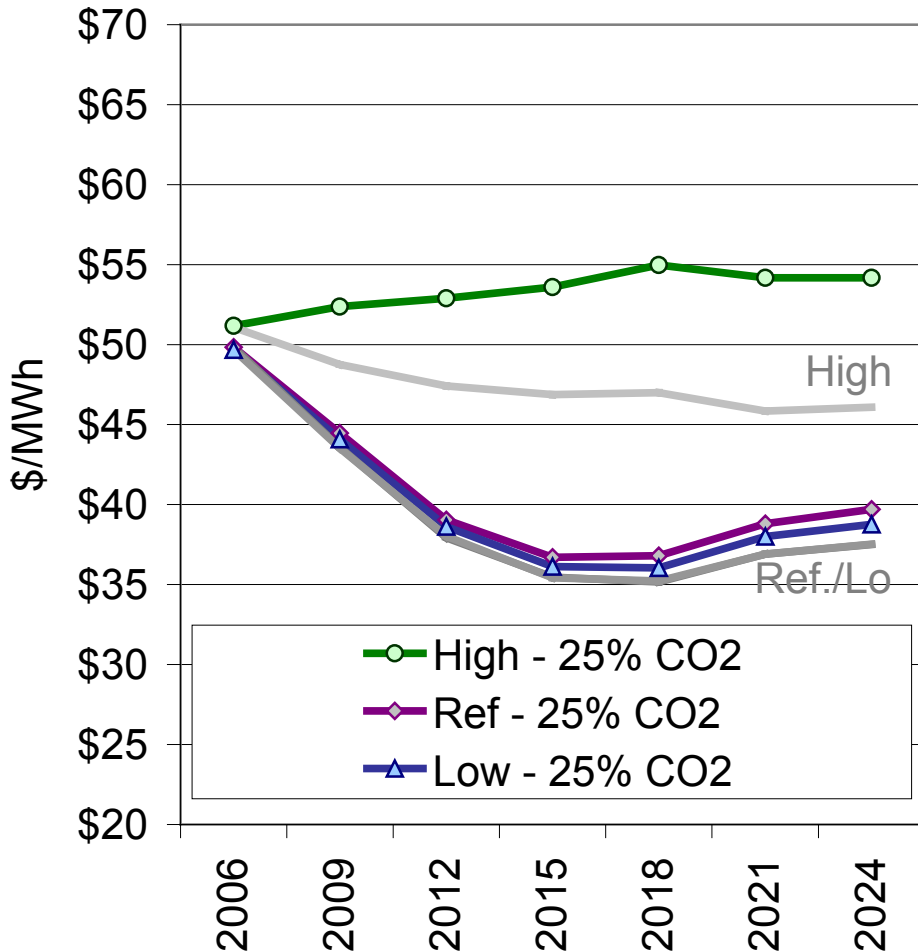
# High Emissions Reference Case – Regional Generation Mix



# RGGI Annual Average Energy Prices (2003\$)

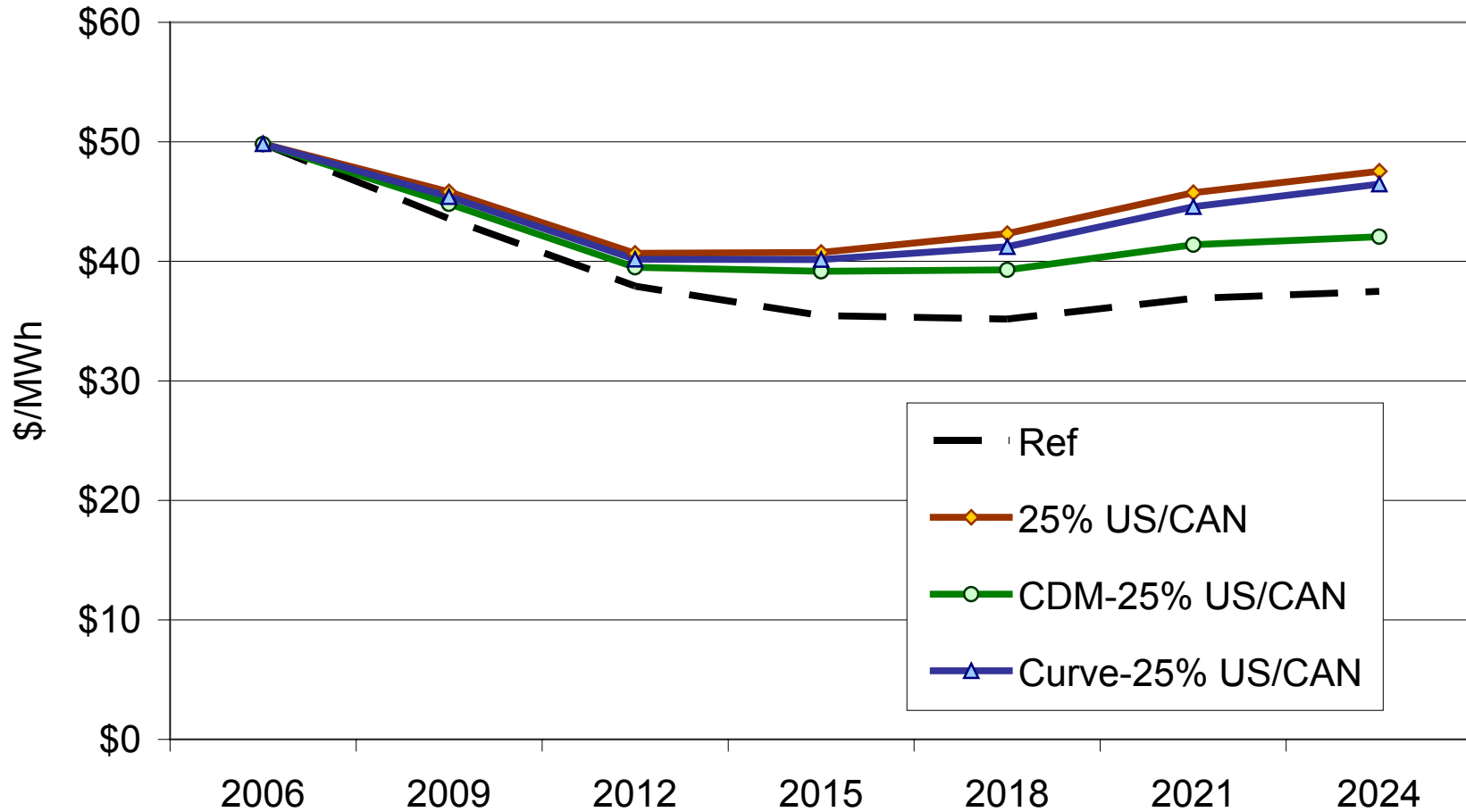
25% Policies without US/Canada

25% Policies with US/Canada

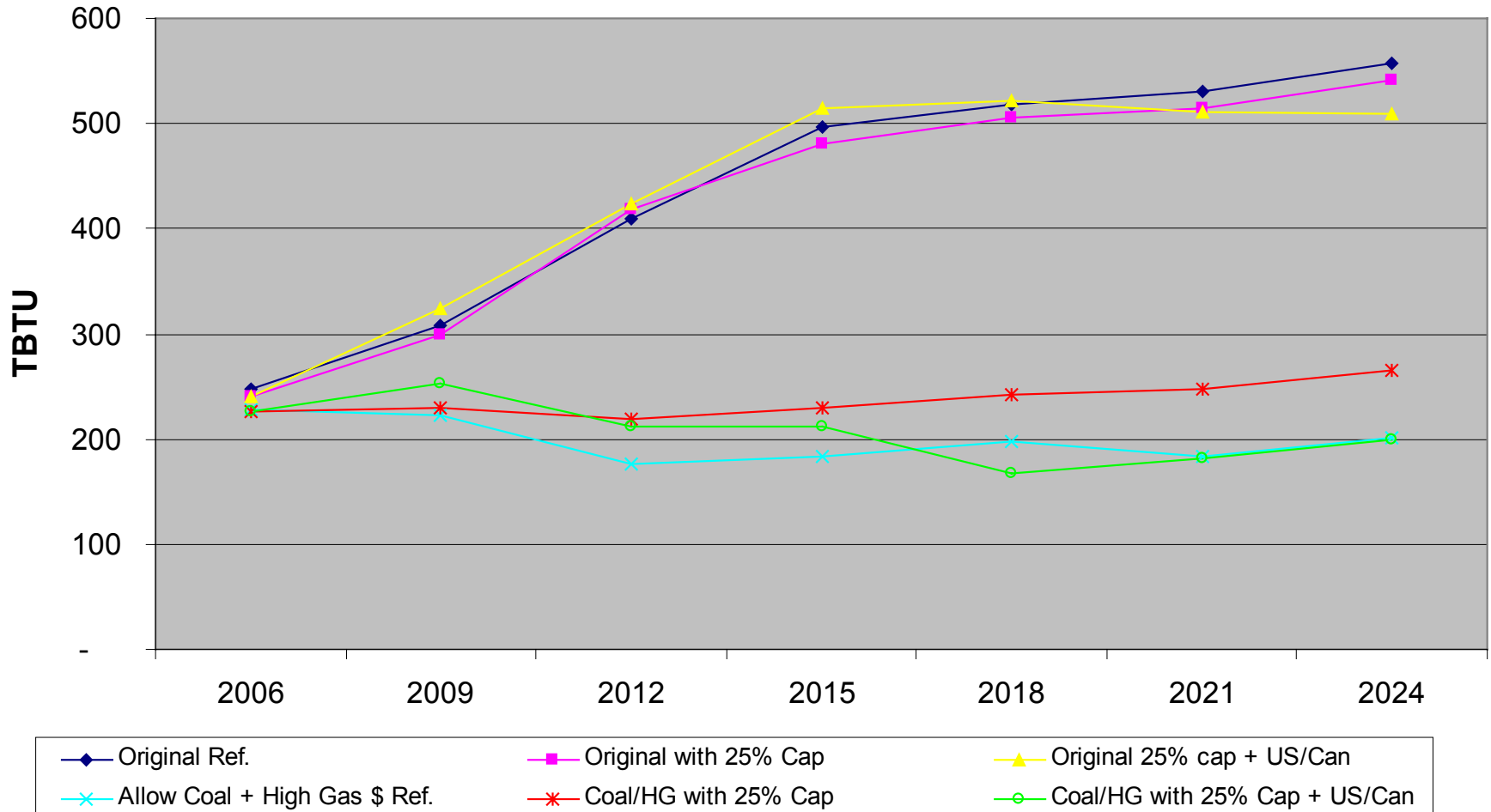


# RGGI Annual Average Energy Prices (2003\$)

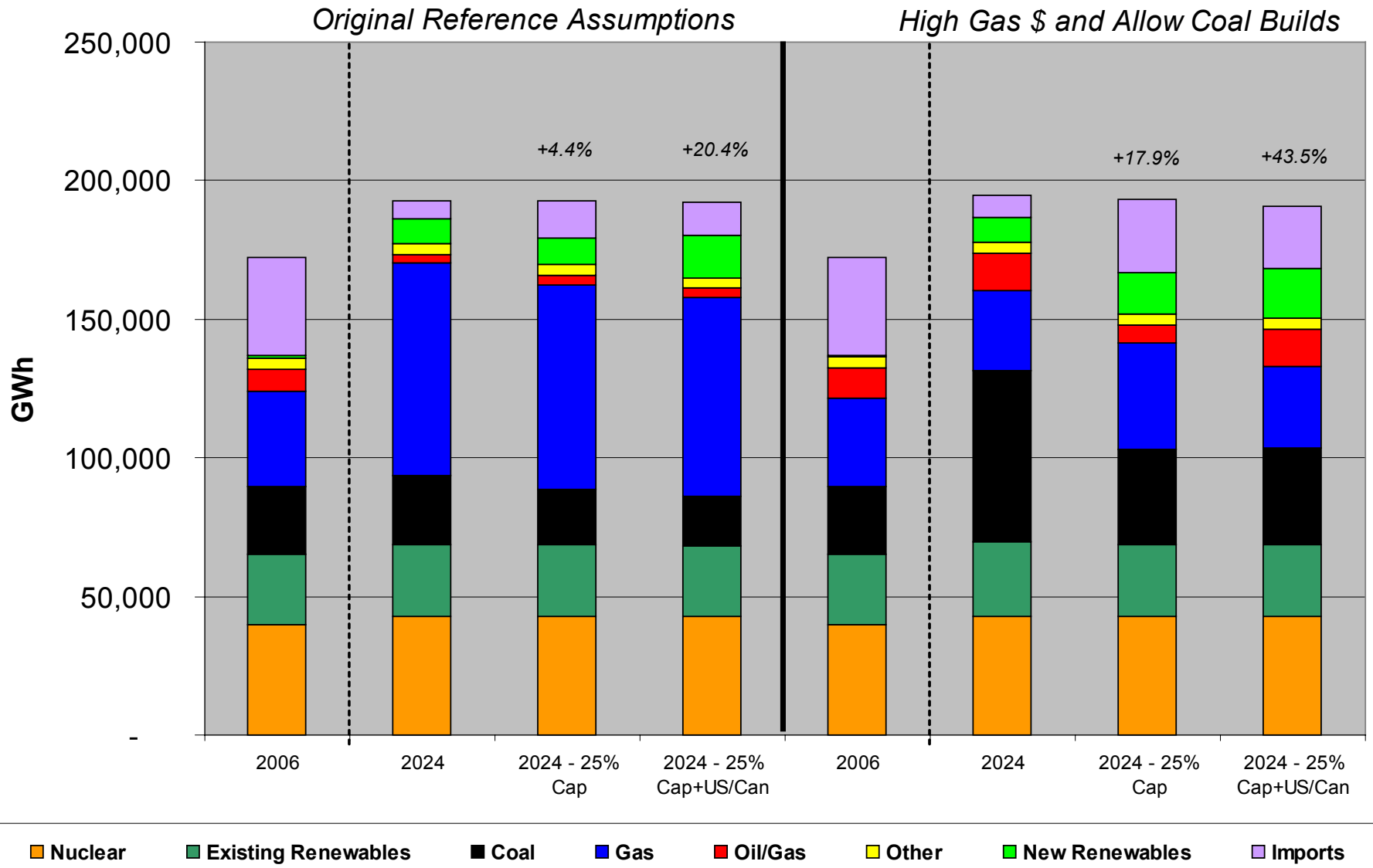
## 25% CO<sub>2</sub> Case with US/Canada



## Natural Gas Useage in NY Under Various Scenarios



# Comparison of NY Generation Mix Under Various Scenarios



# New York Capacity

*Original Reference Assumptions*

*High Gas \$ and Allow Coal Builds*

