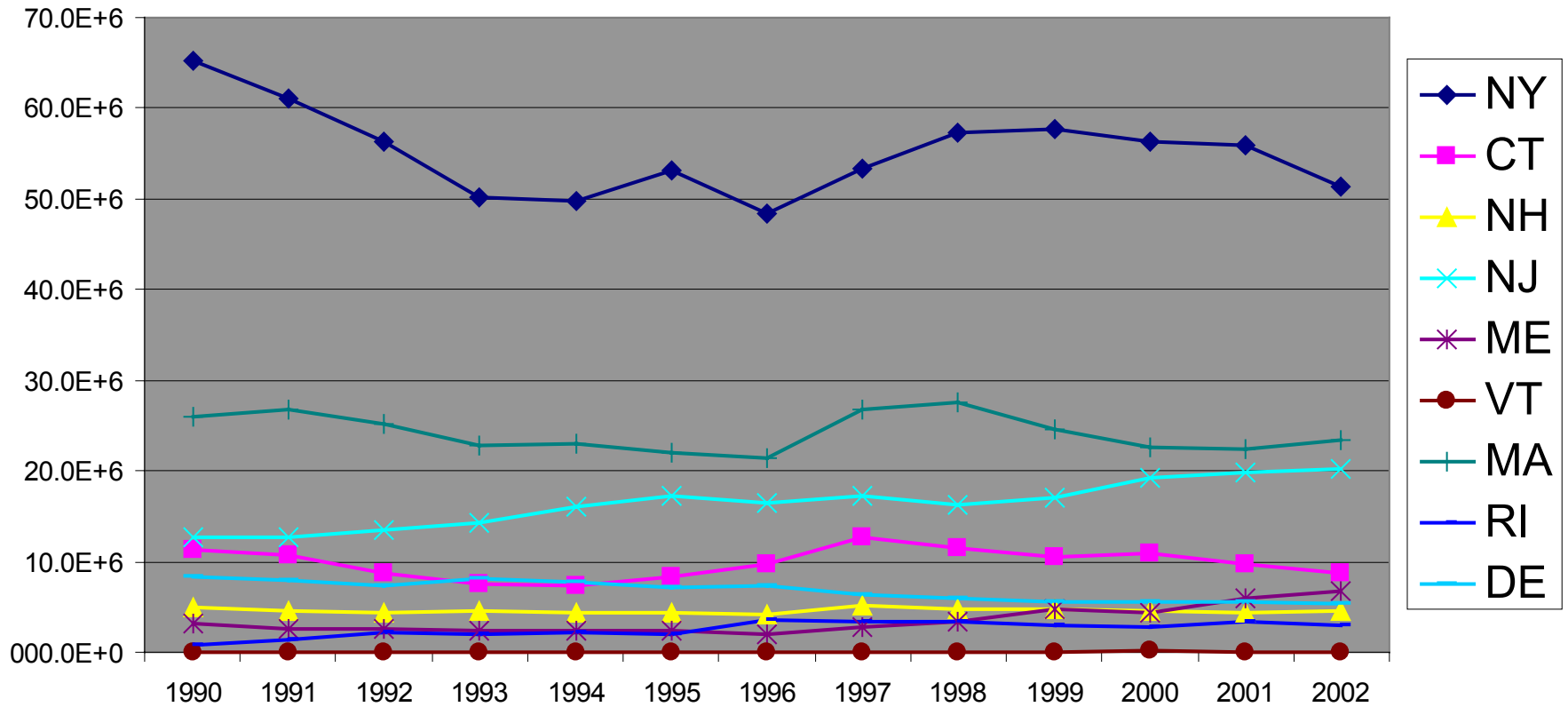


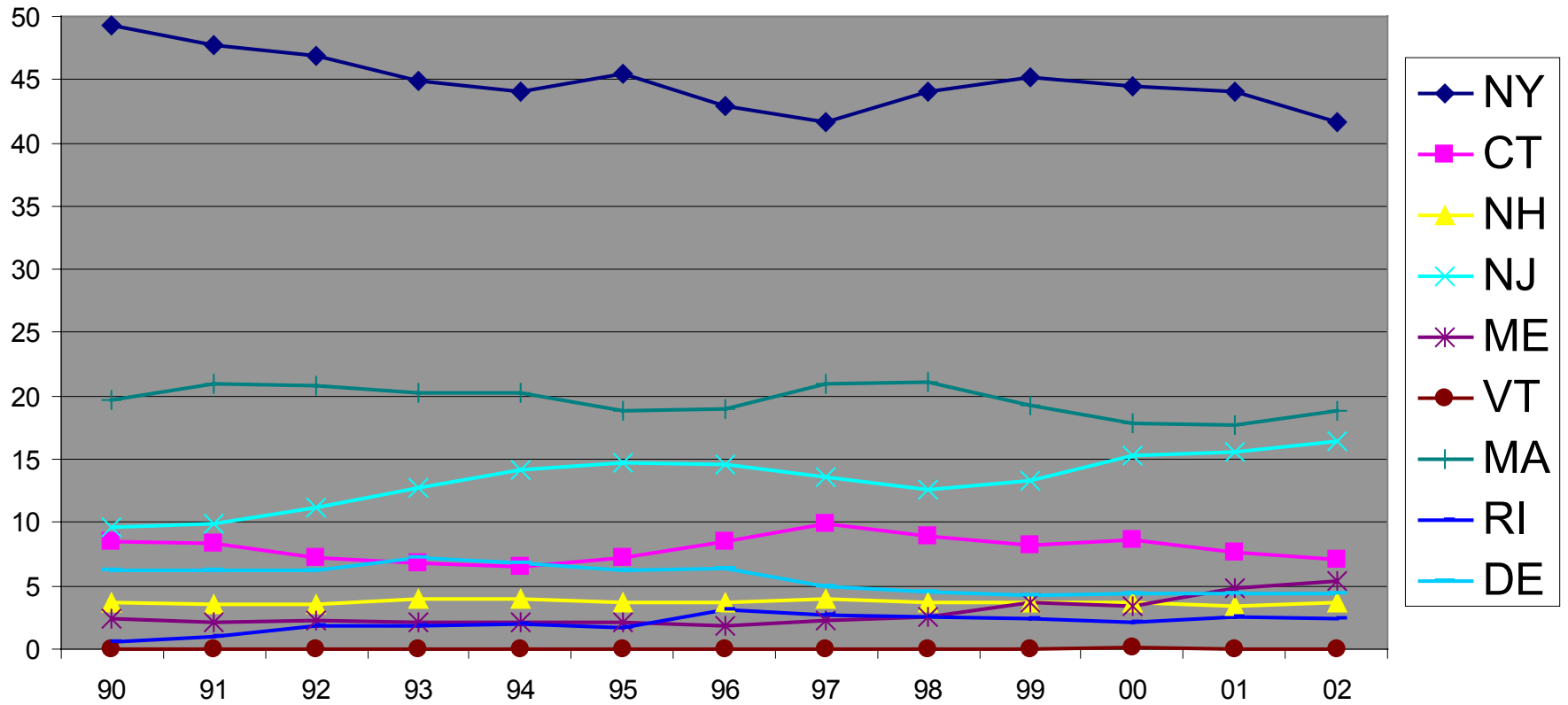
Apportioning to states...what parameters to use?

NYS Coalition of Energy &
Business Groups

CO₂ emissions (metric tons)



CO₂ emissions (% of total)



Coalition recommends:

- using CO₂ emissions (tons) to apportion the regional cap among states
- a baseline of 1990 which gives credit to New York for progress to date
- keep rules simple whenever possible