



FACT SHEET Voluntary Cleanup Program

Receive Site Fact Sheets by Email. See "For More Information" to Learn How.

Site Name: Sid Harvey Industries Facility
DEC Site #: V00145
Address: 100 East Mineola Ave
Valley Stream, NY 11580

Have questions? See "Who to Contact" Below

Cleanup Action to Begin at Voluntary Cleanup Site

Action is about to begin that will address the contamination related to the Sid Harvey Industries Facility site ("site") located at 100 East Mineola Ave, Valley Stream, Nassau County under New York State's Voluntary Cleanup Program. Please see the map for the site location.

Documents related to the cleanup of this site can be found at the location(s) identified below under "Where to Find Information."

The cleanup activities will be performed by Sid Harvey's Industries, Inc. ("volunteer(s)") with oversight provided by the New York State Department of Environmental Conservation (NYSDEC).

Highlights of the Upcoming Cleanup Activities

The goal of the cleanup action for the site is to achieve cleanup levels that protect public health and the environment. The cleanup action for the site includes:

The remedy will include continued use of the existing on-site Air Sparge and Soil Vapor Extraction (AS/SVE), and add Enhanced Bioremediation and Vapor Mitigation. It also employs site management, including institutional and engineering controls, to ensure the remedy continues to be protective and to ensure the appropriate reuse of the property where contamination will remain in place. This remedy will cover both operable units, Operable Unit 1 (OU1), the unsaturated soil and soil gas on-site, and Operable Unit 2 (OU2), the saturated soil and groundwater on-site and off-site.

The existing Soil Vapor Extraction System originally installed as the OU1 remedy was later combined with an Air Sparge system as part of an IRM for OU2 and will continue operation. This AS/SVE system will be reevaluated, optimized and maintained. Air sparging will address the shallow on-site groundwater contaminated by volatile organic compounds (VOCs). VOCs will be physically removed from the groundwater and soil below the water table (saturated soil) by injecting air into the subsurface. As the injected air rises through the groundwater, the VOCs volatilize and transfer from the groundwater and/or soil into the injected air. The VOCs are carried with the injected air into the vadose zone (the area below the ground surface but above the water table) where a soil vapor extraction (SVE) system is used to remove the injected air. The SVE system applies a vacuum to wells that have been installed into the

vadose zone to remove the VOCs from soil along with the air introduced by the sparging process. The air extracted from the SVE wells is then treated as necessary prior to being discharged to the atmosphere.

Enhanced Bioremediation will be employed to treat contaminants in on-site and off-site groundwater. The biological breakdown of contaminants through anaerobic reductive dechlorination will be enhanced by the placement of chemical amendments into the subsurface to promote microbial growth. These amendments will be injected between 60 and 85 feet below ground surface and will treat the groundwater below the AS/SVE system's influence.

Any on-site and off-site buildings impacted by the site will be required to have a sub-slab depressurization system, or a similar engineered system, to mitigate the migration of vapors into the building from soil and/or groundwater.

Site Management will include institutional and engineering controls (IC/EC) to restrict the property to industrial use and prohibit the use of groundwater without treatment, and site monitoring to assess the performance and effectiveness of the remedy.

Additional Details

Prior remedial activities conducted on-site include:

- Excavation of the former concrete structure in the northeast corner of the property;
- Excavation within the building interior during Resource Conservation and Recovery Act closure activities; and
- Installation of an air sparge/soil vapor extraction system.

Next Steps

After completion of the cleanup activities by the volunteer, the volunteer will prepare a Final Engineering Report and submit it to NYSDEC. This document will describe the cleanup activities completed and certify that cleanup requirements have been achieved or will be achieved.

When NYSDEC is satisfied that cleanup requirements have been achieved or will be achieved for the site, it will approve the Final Engineering Report. NYSDEC will then issue the volunteer a release letter that provides a release from liability. This release letter would declare that the volunteer has met its obligations and that NYSDEC would not require the volunteer to perform additional investigation or cleanup at the site, subject to certain conditions. The release letter would allow for the redevelopment of the site.

Background

Location: The Sid Harvey Industries Facility site is located in a suburban area in Valley Stream, Nassau County. The site is located between Merrick Road and Sunrise Highway, about 1500 feet west of Greis Park and adjacent to the elevated railroad tracks.

Site Features: The site is currently occupied. The main site features includes one large, extended building surrounded by paved parking and driveway.

Current Zoning and Land Use: The site is currently zoned commercial and is being used as a floral and event decorator's showroom. The surrounding parcels are currently used for a combination of residential and commercial use. The nearest residential property is adjacent to the site.

Past Use of the Site: Historically, the site had been in use since the 1940s to remanufacture parts for oil-fired boilers. During these operations, disposal of waste solvents to a dry well and leaks associated with solvent recycling equipment, are considered to be the main sources of contamination. In 2006, following a Resource Conservation and Recovery Act (RCRA) investigation, contaminated soils were removed from within the building under remedial actions associated with the RCRA closure.

Operable Units: The site is divided into two operable units. An operable unit represents a portion of a remedial program for a site that for technical or administrative reasons can be addressed separately to investigate, eliminate or mitigate a release, threat of release or exposure pathway resulting from the site contamination. Operable Unit (OU) 1 consists of the on-site soils and soil vapor above the water table. OU2 consists of the saturated soils, below the water table, and groundwater.

Site Geology and Hydrogeology: The geology at the site generally consists of stratified sand and gravels with traces of clays at 80 feet and below. The depth to groundwater in the Upper Glacial Aquifer ranges from about 10 to 12 feet below the land surface. The groundwater generally flows in a southerly direction.

Additional site details, including environmental and health assessment summaries, are available on NYSDEC's website at:

<http://www.dec.ny.gov/cfmx/extapps/derexternal/haz/details.cfm?pageid=3&progno=V00145>

Voluntary Cleanup Program: New York's Voluntary Cleanup Program (VCP) was developed to encourage private sector volunteers to investigate and clean up contaminated properties and return these sites to productive use. Once cleaned up, the properties may be redeveloped for commercial, industrial, residential or public use.

For more information about the VCP, visit: <http://www.dec.ny.gov/chemical/8442.html>

FOR MORE INFORMATION

Where to Find Information

Project documents are available at the following location(s) to help the public stay informed.

Henry Waldinger Memorial Library
60 Verona Place
Valley Stream, NY 11582
phone: (516)-852-6422

Project documents are also available on the NYSDEC website at:

<http://www.dec.ny.gov/chemical/8431.html> (scroll down page)

Who to Contact

Comments and questions are always welcome and should be directed as follows:

Project Related Questions

Robert Decandia
Department of Environmental Conservation
Division of Environmental Remediation
625 Broadway
Albany, NY 12233-7015
518-402-9693
rob.decandia@dec.ny.gov

Site-Related Health Questions

Anthony Perretta
New York State Department of Health
Bureau of Environmental Exposure NYSDOH
ESP Corning Tower, Rm 1787
Albany, NY 12237, NY
518-402-7860
BEEI@health.ny.gov

We encourage you to share this fact sheet with neighbors and tenants, and/or post this fact sheet in a prominent area of your building for others to see.

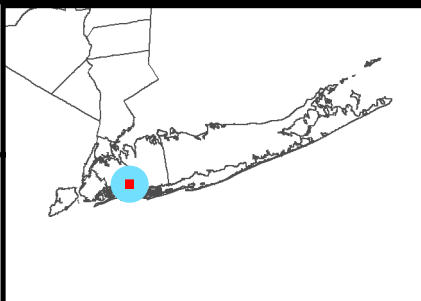
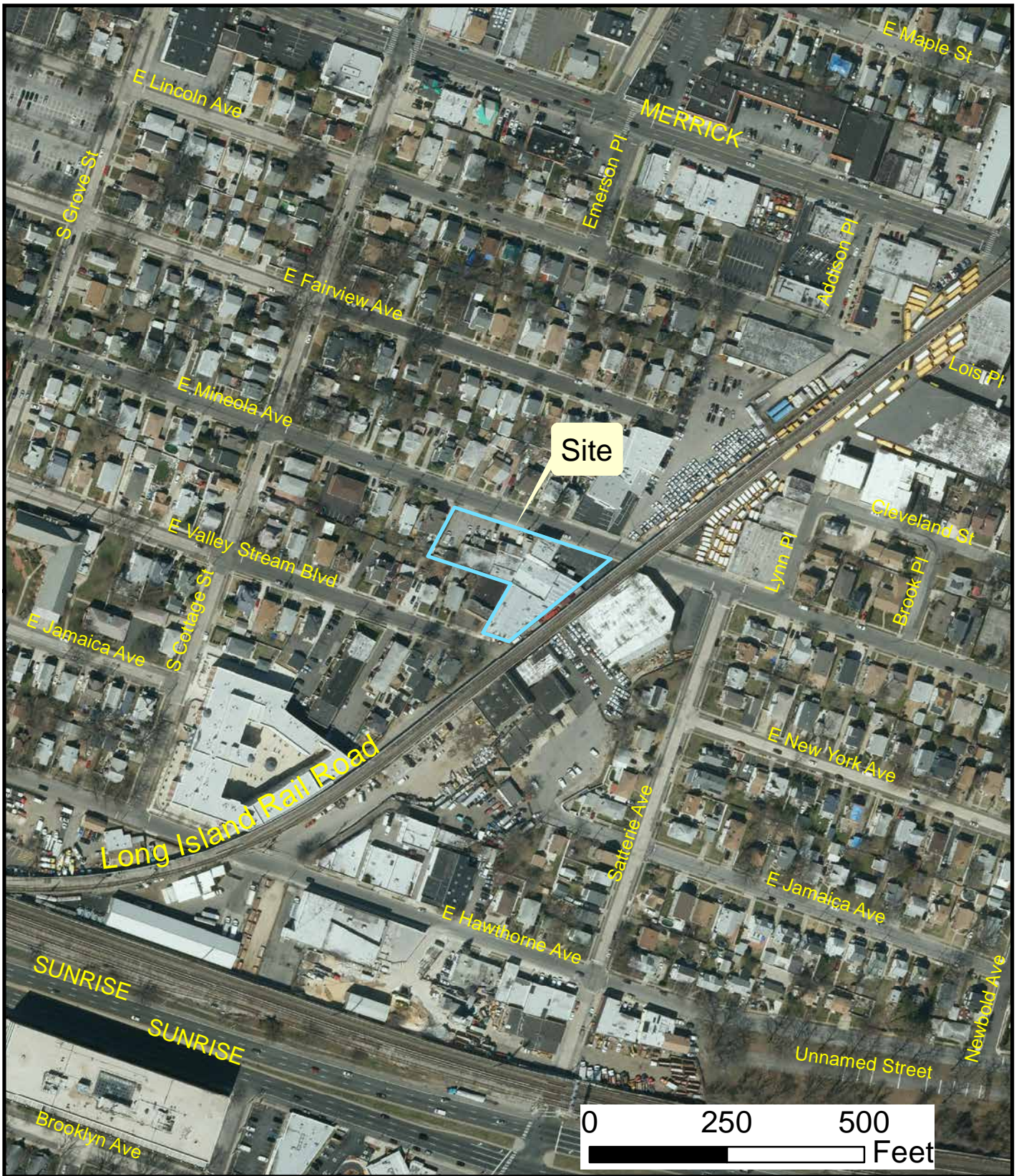
Receive Site Fact Sheets by Email

Have site information such as this fact sheet sent right to your email inbox. NYSDEC invites you to sign up with one or more contaminated sites county email listservs available at the following web page: <http://www.dec.ny.gov/chemical/61092.html>. It's quick, it's free, and it will help keep you *better informed*.



As a listserv member, you will periodically receive site-related information/announcements for all contaminated sites in the county(ies) you select.

Note: Please disregard if you already have signed up and received this fact sheet electronically.



Department of Environmental Conservation

Figure 1
 Site Location Map

Sid Harvey
 Site No. V00145