



Department of
Environmental
Conservation

FACT SHEET

State Superfund Program

Batavia Former MGP

7 Evans Street
Batavia, NY 14020

SITE No. 819019

NYSDEC REGION 8

April 2019

Where to Find Information:

Project documents are available at the following location to help the public stay informed.

Richmond Memorial Library

19 Ross Street
Batavia, NY 14020
(585) 343-9550

Who to Contact:

Comments and questions are always welcome and should be directed as follows:

Project-Related Questions

William Wu, Project Manager
NYSDEC
625 Broadway Floor 11
Albany, NY 12233-7014
(518) 402-9662
william.wu@dec.ny.gov

Project-Related Health Questions

Harolyn Hood
NYSDOH
Corning Tower Room 1787
Empire State Plaza
Albany, NY 12237
(518) 402-7860
bee@health.ny.gov

For more information about New York's State Superfund Program, visit:

www.dec.ny.gov/chemical/8439.html

Remedy Proposed for State Superfund Site; Public Comment Period and Public Meeting Announced

Public Meeting, Tuesday 4/30/19 at 7:00 PM
Richmond Memorial Library, 19 Ross Street, Batavia, NY 14020

NYSDEC invites you to a public meeting to discuss the remedy proposed for the site. You are encouraged to provide comments at the meeting, and during the 30-day comment period described in this fact sheet.

The public is invited to comment on a remedy being proposed by the New York State Department of Environmental Conservation (NYSDEC) in consultation with the New York State Department of Health (NYSDOH) to address contamination related to the Batavia Former MGP site ("site") located at 7 Evans Street, Batavia, Genesee County. Please see the map for the site location. Documents related to the cleanup of this site can be found at the location identified to the left under "Where to Find Information." The estimated cost to implement the remedy is \$363,000.

How to Comment: NYSDEC is accepting written comments about the proposed plan for 30 days, from **April 22** through **May 22, 2019**. The proposed plan is available for public review at the location identified at left under "Where to Find Information." Please submit comments to the NYSDEC Project Manager listed under Project-Related Questions in the "Who to Contact" area at left.

The site is listed as a Class "2" site in the State Registry of Inactive Hazardous Waste Disposal Sites (i.e., list of State Superfund sites). A Class 2 site is defined as one which poses a significant threat to public health and/or the environment whereby action is required.

Proposed Remedial Action Plan: The remedy proposed for the site includes:

- **In-situ solidification (ISS)** – ISS will be implemented in an approximately 1,200 square-foot area in the northeast portion of the site, near the former tar tank/tar house, and will extend to approximately 15 feet below ground surface (bgs) to address contaminant sources. ISS is a process that mixes the contaminated soil with solidifying agents (typically Portland cement), below ground surface using an excavator or auger, creating a solid mass with low soil permeability. This effectively isolates the contaminants from contact with groundwater thereby removing them as a source of groundwater contamination.

STATE SUPERFUND PROGRAM

- **Excavation** – Approximately 660 cubic yards of contaminated soil will be excavated to a depth of approximately 10 feet bgs at the southeast corner of the site, in the area of the former oil underground storage tank (UST), and to a depth of approximately 5 feet bgs in an area at the southern border of the site. Contaminated soil will be disposed of off-site.
- **Backfill** – On-site soil that is approved may be used to backfill the excavations, to the extent that a sufficient volume of on-site soil is available. If additional material is needed to backfill the excavations, approved clean fill will be imported on to the site.
- **Cover System** – A site cover will be required to allow for continued commercial use of the site. Where is it required, a site cover may consist of an approved soil cover or a substitution such as pavement, concrete, paved surface parking areas, sidewalks, building foundations, and building slabs.
- **Monitored Natural Attenuation** – Groundwater contamination (remaining post soil remediation) will be addressed with monitored natural attenuation (MNA). MNA relies on natural processes (biological activity) to breakdown the contamination. It is anticipated that contamination will decrease by 90% within 5 years. Annual reports of the MNA will be provided, and an alternative approach (i.e., active remediation) will be employed if natural processes are not sufficient to address the contamination.
- **Institutional and Engineering Controls** – An institutional control in the form of an environmental easement will be placed on the property. The easement will allow the property to be used for commercial or industrial uses (based on zoning), restrict the use of groundwater, and will require compliance with the Department approved Site Management Plan (SMP), which includes details for maintaining the engineering control (i.e., cover system), and periodic review report submittals.
- **Odor and Dust Control** – A community air monitoring plan will be in place during clean-up activities to prevent vapors, dust, and odors from escaping into the surrounding neighborhood.

NYSDEC developed the proposed remedy after reviewing the detailed investigation of the site and evaluating the remedial options in the “Remedial Investigation/Focused Feasibility Study” submitted under New York’s State Superfund Program by R&J Enterprises of Batavia, LLC (“remedial party”).

Next Steps: NYSDEC will consider public comments as it finalizes the remedy for the site. The selected remedy will be described in a document called a “Record of Decision” that will explain why the remedy was selected and respond to public comments. A detailed design of the selected remedy will then be prepared, and the cleanup will be performed.

NYSDEC will keep the public informed throughout the investigation and cleanup of the site.

Site Description: The site is 1.16-acres and is bordered on the west by Evans Street, on the south by 25 Evans Street (bar/pub) and vacant land, on the north by 32 Ellicott Street (commercial office building), and on the east by 40-52 Ellicott Street (Ellicott Station BCP, site no. C819021). It is currently developed with one of the former gasholder structures being occupied by a doctor’s office. The rest of the site consists of a parking lot. Previously, the site had been a manufactured gas plant (MGP) from 1855 to sometime after 1909, operated by the Batavia Gas Light Company, which eventually became the Batavia Gas and Electric Company. A flouring mill took over the site after the MGP, followed by Granger and Company by 1931. The remedial party acquired the property in 2001.

The gas manufacturing process involved the heating of coal and/or petroleum products to produce a gas mixture. Once cooled and purified, the gas was distributed through a local pipeline network throughout the city of Batavia. The gas was used for heating and cooking in much the same way that natural gas is used today. In the early years, the gas was also used for lighting in homes and streetlights.

Additional site details, including environmental and health assessment summaries, are available on NYSDEC’s Environmental Site Remediation Database (by entering the Site ID, 819019) at:

<http://www.dec.ny.gov/cfm/x/EXTAPPS/DEREXTERNAL/index.cfm?pageid=3>

Summary of the Investigation: The primary contaminants of concern at the site are coal tar (an MGP byproduct) and its related volatile organic compounds (VOCs) and polycyclic aromatic hydrocarbons (PAHs), which are present in on-site soil and groundwater, primarily in the areas of the former MGP operations. These include the former tar tank and former oil UST. Coal tar was found infiltrating a monitoring well near the former tar tank.

State Superfund Program: New York’s State Superfund Program (SSF) identifies and characterizes suspected inactive

STATE SUPERFUND PROGRAM

hazardous waste disposal sites. Sites that pose a significant threat to public health and/or the environment go through a process of investigation, evaluation, cleanup and monitoring.

NYSDEC attempts to identify parties responsible for site contamination and require cleanup before committing State funds.

For more information about the SSF, visit:

<http://www.dec.ny.gov/chemical/8439.html>

We encourage you to share this fact sheet with neighbors and tenants, and/or post this fact sheet in a prominent area of your building for others to see.

Receive Site Fact Sheets by Email

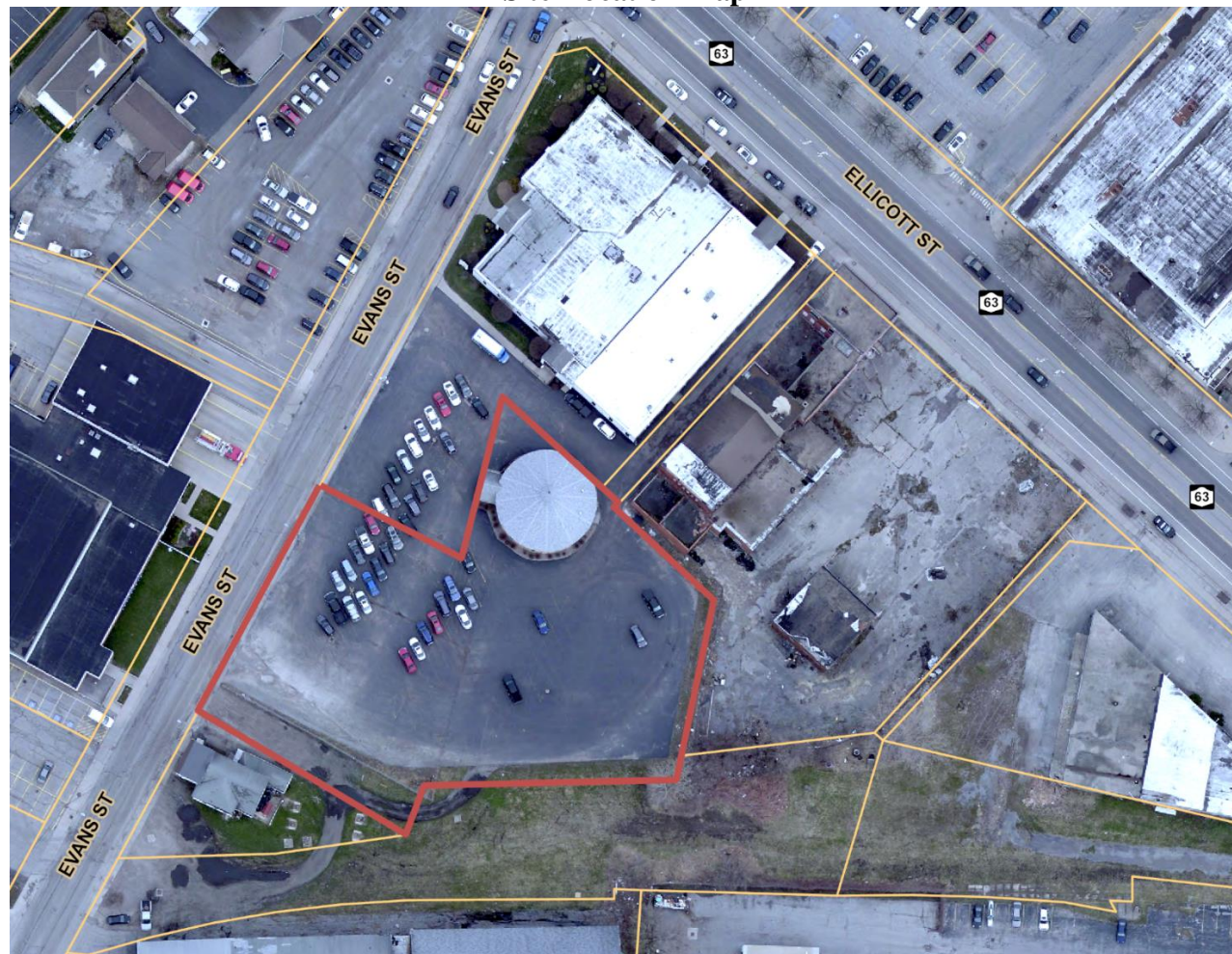
Have site information such as this fact sheet sent right to your email inbox. NYSDEC invites you to sign up with one or more contaminated sites county email listservs at:

www.dec.ny.gov/chemical/61092.html

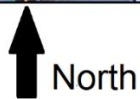
It's quick, it's free, and it will help keep you better informed. As a listserv member, you will periodically receive site-related information/ announcements for all contaminated sites in the county(ies) you select.

Note: Please disregard if you already have signed up and received this fact sheet electronically.

Site Location Map



— Site Border



1:1,651
 0 55 110 220 ft
 0 15 30 60 m