



Receive Site Fact Sheets by *Email*. See "For More Information" to Learn How.

Notice of Availability

Have questions?
See
"Who to Contact"
Below

Record of Decision

Site Name: NYSEG - Elmira Water St. MGP

DEC Site #: 808025

Elmira, Chemung County

The New York State Department of Environmental Conservation (NYSDEC) announces that the printed Record of Decision (ROD) for the NYSEG - Elmira Water St. MGP site ("site") located at 500 East Water St, Elmira, Chemung County is available for public review (see "Where to View the ROD," below).

On Thursday, March 23, 2017 NYSDEC held a public meeting presenting the Proposed Remedial Action Plan (PRAP) for the site. The comments received at this meeting and during the public comment period (February 27, 2017 through March 30, 2017), along with the administrative record, were considered in preparing the final ROD for the site. The ROD presents the remedy selected to address contamination related to the site and the rationale for the chosen remedy. A Responsiveness Summary addressing the public comments received is also included in the ROD.

The estimated cost to implement the remedy is \$3,050,000.

Record of Decision

The following is a summary of the chosen remedy described in the ROD:

- Removal of the subsurface gas holder, its foundation and contents to address soil exceeding 500 parts per million (ppm) of total polycyclic aromatic hydrocarbons (PAHs), and removal of soils below the gas holder foundation that are visibly contaminated with coal tar to prevent future groundwater impacts.
- Placement of an environmental easement on the site, restricting the land use to commercial use, prohibit use of ground water without appropriate treatment; and
- Implementation of a Site Management Plan which will include an excavation plan to manage the soils underneath the cover system and groundwater monitoring plan.

The remedial work will be conducted by New York State Electric and Gas (NYSEG) under oversight of the NYSDEC.

Where to View the ROD:

The site ROD with Responsiveness Summary can be reviewed at the following locations:

Chemung County Steele Memorial Library
Attn: Connie Ogilvie
101 E. Church St.
Elmira, NY 14901
phone: 607-733-9175

NYSDEC, Region 8 Attn:
Linda Vera 6274 E. Avon-
Lima Rd. Avon, NY 14414
phone: 585-226-5324

The ROD also can be reviewed on the NYSDEC website at:
<http://www.dec.ny.gov/chemical/37556.html> (Scroll down under Chemung County)

Who to Contact

Comments and questions are always welcome and should be directed as follows:

Project Related Questions

Parag Amin
Department of Environmental Conservation
Division of Environmental Remediation
625 Broadway
Albany, NY 12233-7014
518-402-9648
parag.amin@dec.ny.gov

Site-Related Health Questions

Scarlett McLaughlin
New York State Department of Health
Bureau of Environmental Exposure Investigation
Empire State Plaza - Corning Tower Room 1787
Albany, NY 12237
518-402-7860
BEEI@health.ny.gov

We encourage you to share this fact sheet with neighbors and tenants, and/or post this fact sheet in a prominent area of your building for others to see.

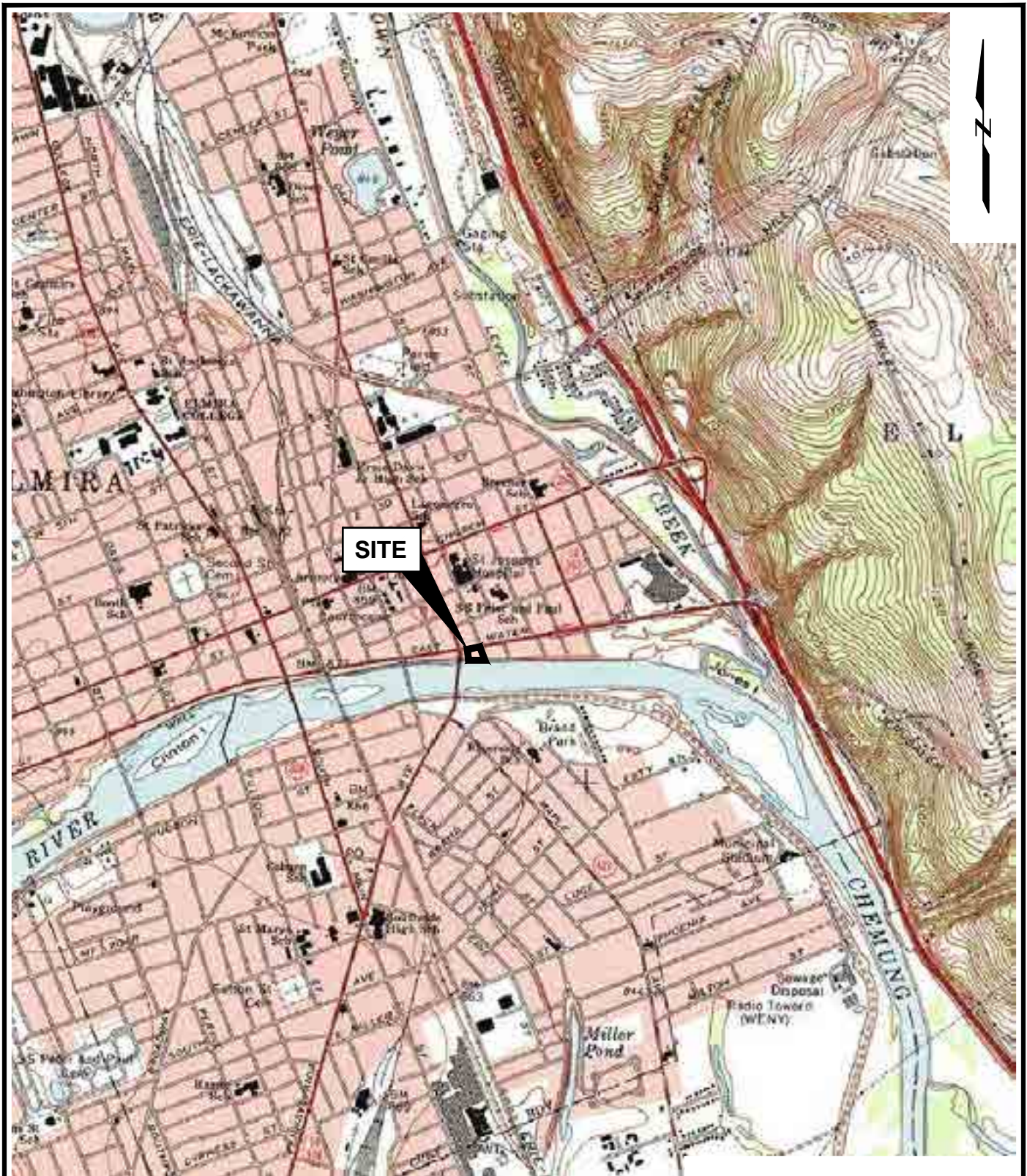
Receive Site Fact Sheets by Email

Have site information such as this fact sheet sent right to your email inbox. NYSDEC invites you to sign up with one or more contaminated sites county email listservs available at the following web page: <http://www.dec.ny.gov/chemical/61092.html>. It's quick, it's free, and it will help keep you *better informed*.



As a listserv member, you will periodically receive site-related information/announcements for all contaminated sites in the county(ies) you select.

Note: Please disregard if you already have signed up and received this fact sheet electronically.



SOURCE:

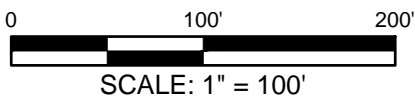
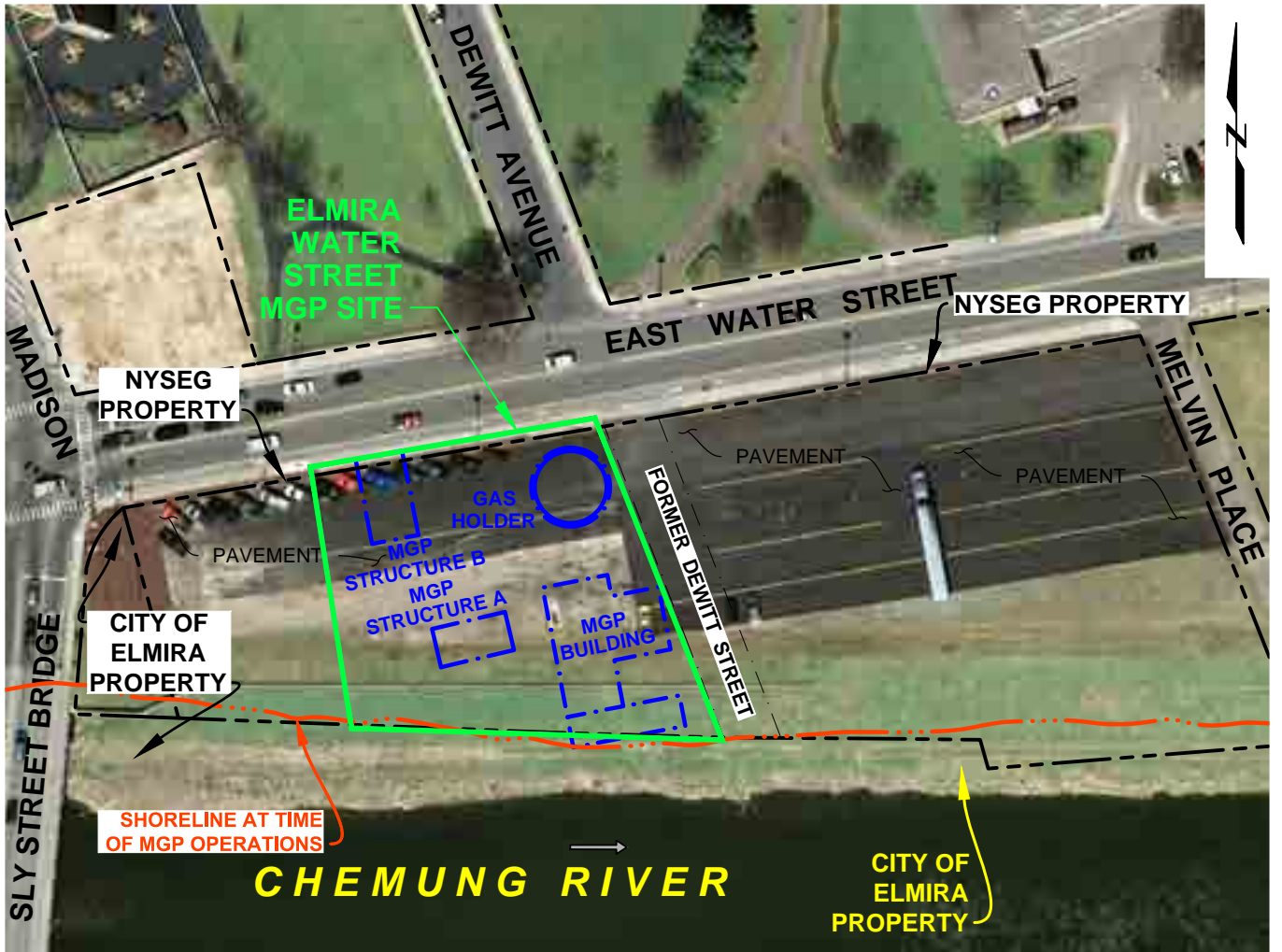
U.S.G.S. TOPOGRAPHIC MAP ELMIRA, NY 1969, CREATED WITH TOPO!
 © 2001 NATIONAL GEOGRAPHIC (www.nationalgeographic.com/topo)

0 2000' 4000'



SCALE: 1" = 2000'

<p>Elmira Water Street MGP Site Elmira, New York</p>		<p>SITE LOCATION</p>
<p>NYSEG Binghamton, New York</p>		<p>Fig. 1</p>



SOURCES

1. AERIAL PHOTOGRAPH FROM GOOGLE-IMAGERY
COPYRIGHT 2011 GEOEYE, NEW YORK GIS.
2. 5/30/13 KEYSTONE ASSOCIATES PLS, SURVEY.

LEGEND:

- CURRENT PROPERTY LINE
- MGP SITE BOUNDARY
- HISTORICAL MGP FEATURE
- FORMER ROADWAY

Elmira Water Street MGP Site
Elmira, New York

NYSEG
Binghamton, New York



SITE LOCATION

Fig. 2